



## AX-X1 Auxiliary contact

### 1. Compliant standards

IEC60947-5

### 2. Compliant certification

CE, RoHS

### 3. Major function

To achieve long-distance signal indication for the open/close status of the circuit breaker

### 4. Technical data

Table 1

Utilization category	Rated operating voltage V	Rated operating current A
AC-12	AC 415	3
	AC 240	6
DC-12	DC 130	1
	DC 48	2
	DC 24	6

Action characteristics: Figure 1 shows the

wiring diagram for auxiliary contacts.

When the auxiliary contacts is open, terminals

11 and 12 are connected;

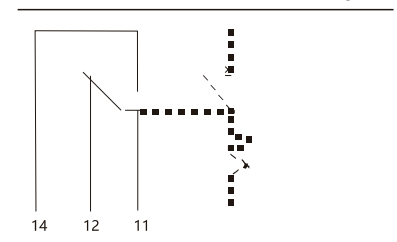
When the auxiliary contacts is closed, terminals

11 and 14 are connected.

Life: Operating life of auxiliary contacts is

≥ 10000 cycles.

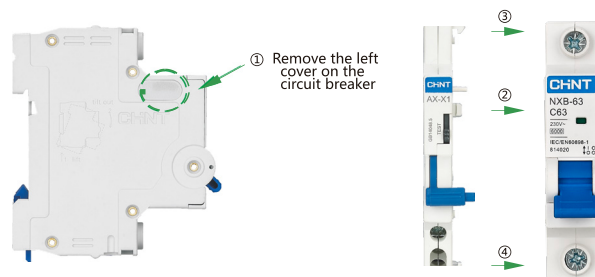
Figure 1



### 5. Assembly and installation of the product

Can be assembled with NXB-63, NXB-40 series circuit breakers, with assembly diagram shown below:

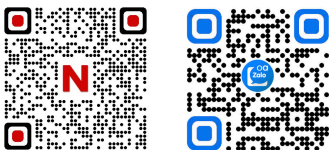
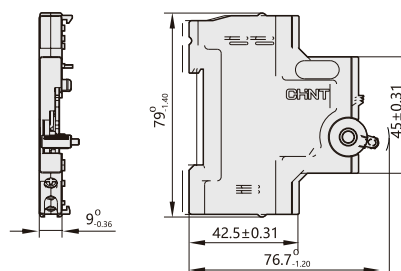
Figure 2



After AX-X1 is assembled with the circuit breaker, mount them on the TH3.5-7.5 steel mounting rail.

### 6. Dimensions and installation sizes

Figure 3



[www.npower.com.vn](http://www.npower.com.vn)

Powered by NAVITECH | [www.navitech.co](http://www.navitech.co)