



2. Type designation

N JYW 1 - □ □

Length of electrode lead-wire:

L1:represents the max length of lead-wire is 1km

L2:represents the max length of lead-wire is 2km

Function code:

N:water supply,water drainage type

B:water supply and water drainage with anti-exhausted of pump type

Design sequence No.

Liquid

Company code

NJYW1 Series Liquid Control Relays

1. General

Applied to the control circuit with AC 50Hz/60Hz and rated control power voltage up to 380V, NJYW1 series liquid level relay (hereinafter referred to as the relay) is mainly used for the automatic control of liquid level in civil water tower, high level water tank, underground water storage tank and etc. According to the user's wiring requirements, it can achieve the automatic control of water supply or drainage.

This product cannot be applied to the level control of the liquid with poor conductivity, such as oil, purified water, flammable and explosive chemical liquid and sewage with high density.

Standards:IEC/EN 60947-5-1

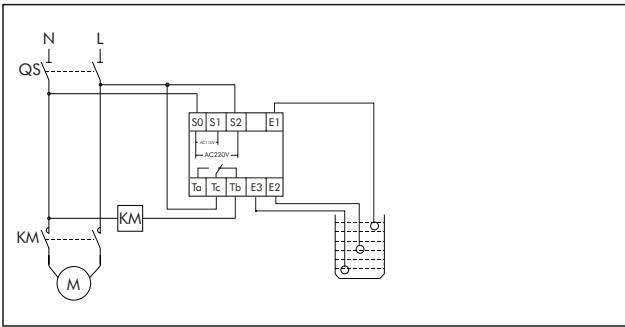


3. Technical data

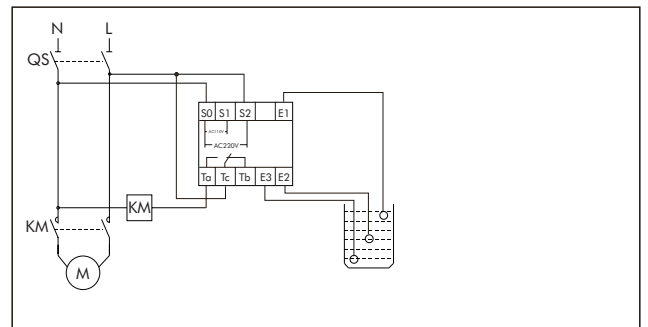
Type	NJYW1-NL1	NJYW1-NL2	NJYW1-BL1	NJYW1-BL2
Operating mode	Continuous working			
Contact number	One group changeover contact		One group of normally open,one group of normally closed	
Contact capacity	Ue/Ie: AC-15 240V/0.75A, 415V/0.47A; Ith:5A			
Rated control power voltage	AC36V, AC110V/220V, AC220V/380V,50Hz/60Hz		AC36V, AC110V, AC220V, AC380V, 50Hz/60Hz	
Allowable fluctuation range of rated control power supply voltage	85%~110%			
Control electrode voltage	24V			
Conductor length	Max 1km	Max 2km	Max 1km	Max 2km
Operating resistance	≤25kΩ			
Releasing resistance	≥2kΩ			
Response time	Reacting:max 80ms;releasing:max 160ms			
Ambient temperature	-5℃ ~ +40℃			
Power consumption	<3VA			
Installation mode	Guide rail type or device type			

4. Wiring diagram

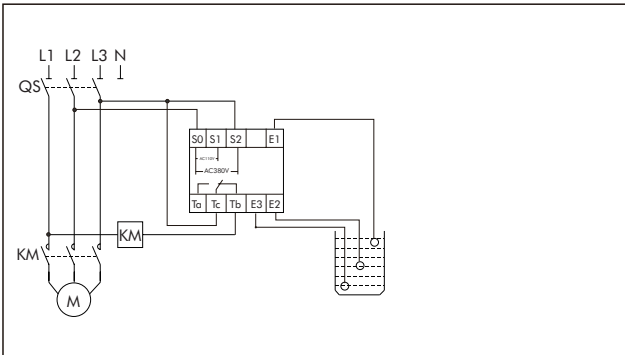
Wiring diagram for NJYW1-NL1, NJYW1-NL2
water supply mode 110V/220V



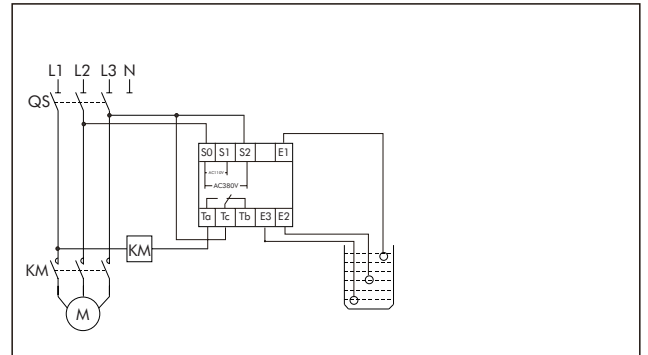
Wiring diagram for NJYW1-NL1, NJYW1-NL2
water drainage mode 110V/220V



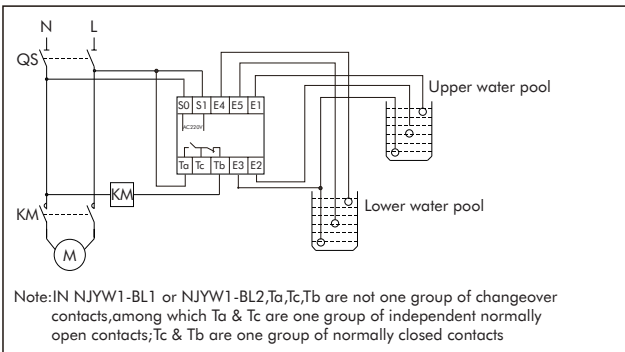
Wiring diagram for NJYW1-NL1, NJYW1-NL2
water supply mode 220V/380V



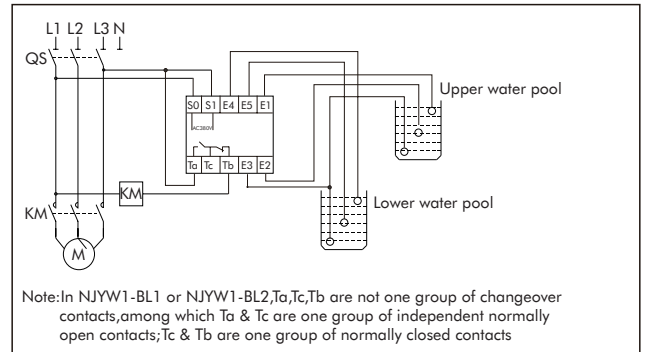
Wiring diagram for NJYW1-NL1, NJYW1-NL2
water drainage mode 220V/380V



wiring diagram for NJYW1-BL1 and NJYW1-BL2
upper/lower water pool level control 220V

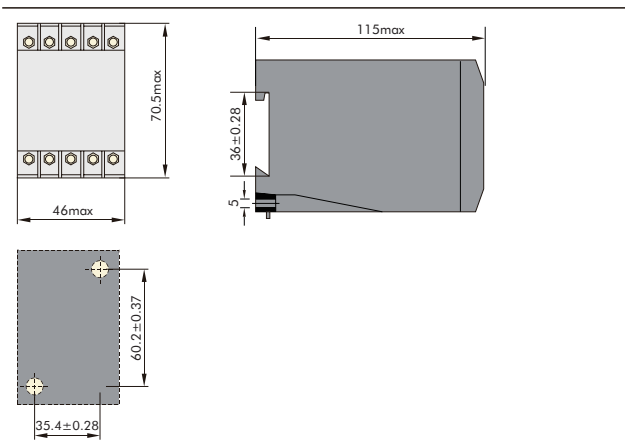


wiring diagram for NJYW1-BL1 and
NJYW1-BL2 upper/lower water pool level control 380V



5. Overall and mounting dimensions (mm)

NJYW1-NL1,
NJYW1-NL2, NJYW1-BL1, and NJYW1-BL2



Note: NJYW1-BL1 & NJYW1-BL2 can be used as water supply or water drainage control independently, its wiring diagram referring to NJYW1-NL1.

NJYW1	-	N	L1	AC110V
↓		↓	↓	↓
Product series		Functional code	Length of electrode lead-wire:	Control voltage
		N:water supply;water drainage type B:water supply and water drainage withanti-exhausted of pump type	L1:the max length of lead-wire is 1km L2:the max length of lead-wire is 2km	AC36V AC110V AC220V AC380V AC110V/220V AC220V/380V

Control voltage	Contact ability	Contact group	Cable length	Description	Code
AC36V	240V/0.75A, lth:5A	1Z	≤1km	NJYW1-NL1 AC36V	311014
AC220V	240V/0.75A, lth:5A	1Z	≤1km	NJYW1-NL1 AC110V/220V	311015
AC220V/380V	240V/0.75A, lth:5A	1Z	≤1km	NJYW1-NL1 AC220V/380V	311016
AC36V	240V/0.75A, lth:5A	1Z	≤2km	NJYW1-NL2 AC36V	311017
AC220V	240V/0.75A, lth:5A	1Z	≤2km	NJYW1-NL2 AC110V/220V	311018
AC220V/380V	240V/0.75A, lth:5A	1Z	≤2km	NJYW1-NL2 AC220V/380V	311019
AC36V	240V/0.75A, lth:5A	1NO+1NC	≤1km	NJYW1-BL1 AC36V	311020
AC110V	240V/0.75A, lth:5A	1NO+1NC	≤1km	NJYW1-BL1 AC110V	311021
AC220V	240V/0.75A, lth:5A	1NO+1NC	≤1km	NJYW1-BL1 AC220V	311022
AC220V/380V	240V/0.75A, lth:5A	1NO+1NC	≤1km	NJYW1-BL1 AC380V	311023
AC36V	240V/0.75A, lth:5A	1NO+1NC	≤2km	NJYW1-BL2 AC36V	311024
AC110V	240V/0.75A, lth:5A	1NO+1NC	≤2km	NJYW1-BL2 AC110V	311025
AC220V	240V/0.75A, lth:5A	1NO+1NC	≤2km	NJYW1-BL2 AC220V	311026
AC220V/380V	240V/0.75A, lth:5A	1NO+1NC	≤2km	NJYW1-BL2 AC380V	311027
10A-16A	7.5kW	AC380V	/	NJBK5-10D 10A-16A AC380V	281121
20A-25A	11kW	AC380V	/	NJBK5-10D 20A-25A AC380V	281122

