



NXB-125  
Moulded Case Circuit Breaker

---

# User Instruction

---

## **Safety Warning**

---

- ❶ Installation in any damp, condensed-phase environment with inflammable and explosive gas is forbidden. It is strictly prohibited to operate the product with wet hands.
- ❷ You are prohibited from touching the conductive part when the product is operating.
- ❸ It is strictly prohibited to test the performance of the product by the direct contact of the hot wire against the grounding device or the direct short circuit of the hot wire and the neutral wire.
- ❹ When the product is being installed or maintained, the power must be switched off.
- ❺ The protection features of the product are set by the manufacturer. It is not allowed to open or adjust the circuit breaker at will.
- ❻ The product must be wired and installed by qualified personnel and be checked regularly.
- ❼ It is prohibited to let children play with the product or the package.
- ❽ Prevent foreign objects from falling into the product.
- ❾ Do not install the product at places where gas media can cause metal corrosion and insulation damage.
- ❿ Tighten the wiring screws when installing the product to prevent wires from loose or being pulled out. Select wires strictly according to instructions and connect them to proper power supply and load.
- ⓫ This product does not provide protection for electric shock and electricity unbalance.

## 1 Purpose of Use

The NXB-125 moulded case circuit breaker is applicable to circuits with frequency of AC 50 Hz, rated voltage up to 240/415 V and rated current up to 125 A. It provides overload and short circuit protection, and can also be used for infrequent switching of the circuit under normal circumstances.

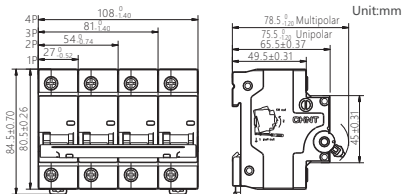
## 2 Key Technical Parameters

Table 1 Key Technical Parameters

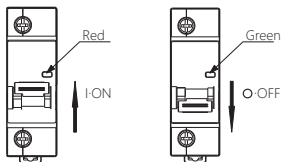
Rated Working voltage ( $U_e$ )	1P: AC 230V or 240V 2P, 3P, 4P: AC 400V or 415V
Rated limit short-circuit breaking capacity ( $I_{cu}$ )	10kA
Altitude	$\leq 2,000\text{m}$
Pollution level	Level 3
Enclosure protection class	IP20
Installation category	Class III

## 3 Installation

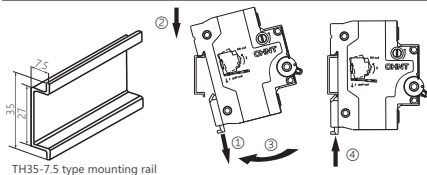
### 1. Outline and installation dimensions



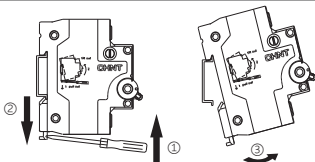
## 2. On-off indication



## 3. Installation



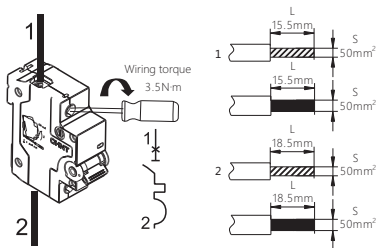
## 4. Disassembly



## 5. Wiring: copper wires only

**Table 2 Copper wire cross-sectional area**

Rated current $I_n$ (A)	Copper wire cross-sectional area $S$ (mm <sup>2</sup> )
63	16
80	25
100	35
125	50



## 4 Maintenance

- 1、 Check the circuit breaker on a regular basis during operation;
- 2、 After the circuit breaker cuts off the overload or short-circuit current, the fault should be eliminated before closing the circuit breaker.

**Table 3 Analysis and troubleshooting of common faults**

Symptoms	Cause analysis	Troubleshooting method
Cannot close the circuit breaker by handle.	Short circuit at load end	Eliminate the fault
	Fault occurs to the operating mechanism.	Replace the product
	The rated current of the circuit breaker does not match the load current	Replace with product of proper specifications
Temperature is too high.	The wire is loose or not properly fixed by wiring screws.	Tighten the wiring screws
	The cross-sectional area of the selected wire is too small	Replace with wire of proper specifications
The circuit breaker is not disconnected when short circuit occurs	The selected circuit breaker does not match the working conditions of the load	Change with circuit breaker of proper specifications
No power	Too short wire stripping	Re-strip the wire
	The wire is loose or not properly fixed by wiring screws.	Tighten the wiring screws

## 5 Environmental Protection

In order to protect the environment, the product or product parts should be disposed of according to the industrial waste treatment process, or be sent to the recycling station for assortment, dismantling and recycling according to local regulations.

---

The CHINT logo is displayed in white text on a blue rectangular background. The letter 'i' in 'CHINT' has a small red dot above it.

**QC PASS**

**NXB-125**  
**Moulded Case Circuit Breaker**  
**IEC/EN 60947-2**

**Check 24**

---

Test date: Please see The packing

---

**ZHEJIANG CHINT ELECTRICS CO.,LTD.**

---

# CHINT

CHINT ELECTRICS

NXB-125

Moulded Case Circuit Breaker

User Instruction



**[www.npower.com.vn](http://www.npower.com.vn)**

Powered by **NAVITECH** | [www.navitech.co](http://www.navitech.co)

**Zhejiang Chint Electrics Co., Ltd.**

Add: No.1, CHINT Road, CHINT Industrial Zone, North Baixiang,  
Yueqing, Zhejiang 325603, P.R.China

E-mail: [global-sales@chint.com](mailto:global-sales@chint.com)

Website: <http://en.chint.com>

