



SHT-X3  
Shunt Release

---

# User Instruction

---



**[www.npower.com.vn](http://www.npower.com.vn)**

Powered by **NAVITECH** | [www.navitech.co](http://www.navitech.co)

## **Safety Warning**

---

- ① Installation in any damp, condensed-phase environment with inflammable and explosive gas is forbidden. Do not use wet hands to operate the product.
- ② You are prohibited from touching the conductive part when the product is operating.
- ③ When the product is being installed or maintained, the power must be switched off.
- ④ Only professional technicians are allowed for installation, wiring and regular inspection.
- ⑤ It is prohibited to let children play with the product or the package.
- ⑥ Do not let any foreign object to fall into the product.
- ⑦ Do not install the product at places where gas media can cause metal corrosion and insulation damage.
- ⑧ Tighten the wiring screws when installing the product to prevent wires from loose or being pulled out. Select wires strictly according to instructions and connect them to proper power supply and load.
- ⑨ This product does not provide protection for electric shock and electricity unbalance.
- ⑩ Do not install over 3 accessories to the circuit breaker.

## 1 Purpose of Use

SHT-X3 shunt release is applicable to circuits with frequency of AC 50Hz or 60Hz, rated AC voltage up to 400V and rated DC voltage up to 48V. It is used with NXB-125 series circuit breakers for remote control of the breaking of circuit breaker.

The shunt release is an accessory, which should be installed on the right side of the circuit breaker.

## 2 Key Technical Parameters

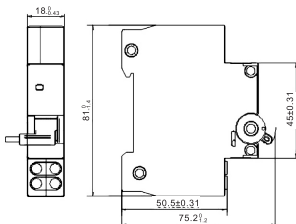
**Table 1 Key technical parameters**

No.	Technical parameters	Parameter value
1	Rated operating current under different rated voltage.	AC: Ue=400V/48V In=3A Ue=230V/24V In=6A
		DC: Ue=48V In=3A Ue=24V In=6A
2	Rated insulation voltage (Ui)	500V
3	Enclosure protection class	IP20
4	Application category	AC-12, DC-12

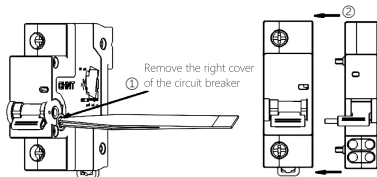
### 3 Installation

#### 1. Outline and installation dimensions

Unit:mm

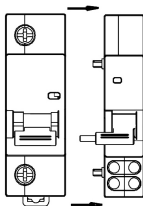


#### 2. Assembly



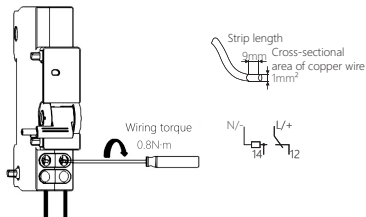
### 3. Disassembly

---



### 4. Wiring: copper wires only

---



## 4 Maintenance

Check the shunt release and the installed circuit breaker on a regular basis during operation;

If the circuit breaker cuts off overload or short circuit current, please eliminate the fault first before closing the shunt release.

**Table 2 Fault analysis and troubleshooting**

Symptoms	Cause analysis	Troubleshooting method
Cannot close the release by handle.	The shunt control signal is in the control circuit.	Disconnect the shunt control signal
	Fault occurs to the operating mechanism.	Replace the product
	The release is not properly fitted to the circuit breaker.	Re-assemble the product
	The rated current of the fitted circuit breaker does not match with the load current.	Replace a circuit breaker with proper specifications.
No power	The wire strip length is too short.	Re-strip the wire
	The wire is loose or not properly fixed by	Tighten the wiring screws

## 5 Environmental Protection

In order to protect the environment, the product or product parts should be disposed of according to the industrial waste treatment process, or be sent to the recycling station for assortment, dismantling and recycling according to local regulations.

---

The image shows a rectangular label with a blue header and a light blue body. The header contains the CHINT logo in white. The body contains the text 'QC PASS' in large blue letters, followed by 'SHT-X3' and 'Shunt Release' in black. A red rounded rectangle highlights the text 'Check 12'. Below this, there are two horizontal lines, the first containing 'Test date: Please see The packing' and the second containing 'ZHEJIANG CHINT ELECTRICS CO.,LTD.'.

**CHINT**

**QC PASS**

SHT-X3  
Shunt Release

Check 12

---

Test date: Please see The packing

---

**ZHEJIANG CHINT ELECTRICS CO.,LTD.**

---

# CHINT

CHINT ELECTRICS

SHT-X3

Shunt Release

User Instruction



**[www.npower.com.vn](http://www.npower.com.vn)**

Powered by **NAVITECH** | [www.navitech.co](http://www.navitech.co)

**Zhejiang Chint Electrics Co., Ltd.**

Add: No.1, CHINT Road, CHINT Industrial Zone, North Baixiang,  
Yueqing, Zhejiang 325603, P.R.China

E-mail: [global-sales@chint.com](mailto:global-sales@chint.com)

Website: <http://en.chint.com>

