

## TF62A

Analog twin timer



- 38.4(W) × 42.4(H) × 59.0(D) mm Compact size
- Easy time setting by using the dial
- Twin timer with separately set ON/OFF time
- Multi-time Range : 18 Multiple time Range
- Various output operations : 6 operating modes
- Various time setting range : 0.1sec~ 60 hour
- Selecting units of time (sec, min, hour)
- Easy maintenance by installing the flush mounting type bracket
- 24 - 240 V a.c. 50/60 Hz, 24 - 240 V d.c. dual usage

## Specification

Model		TF62A
Timer type		Analog twin timer
Power voltage		24 - 240 V a.c. 50/60 Hz or 24 - 240 V d.c. dual usage
Allowable voltage		±10 % of Power supply voltage
Power consumption		■Max. 4.1 VA (24 - 240 V a.c. 50/60 Hz) ■Max. 2 W (24 - 240 V d.c.)
Operating time range		0.1 sec ~ 60 hour
Operating time error		■Setting error : Max. ±5 % ±0.05 sec ■Repetition error : Max. ±0.3 % (* percentage of full scale) ■Voltage error : Max. ±0.5 % ■Temperature error : Max. ±2 %
Return time		Max. 100 ms
External connection method		8-pin socket
Control output	Operation mode	A/B/C/D/E/F (selected by front operating mode selector switch)
	Contact composition	■instantaneous SPDT (1c) + Time limit SPDT (1c) ■Time limit DPDT (2c) *Automatic change of contact composition according to operation mode
	Contact capacity	■N.O. (250 V a.c. 3A Resistive load) ■N.C. (250 V a.c. 2A Resistive load)
Relay life		■Mechanical life : Min. 10 million cycles ■Electrical life: Min. 20,000 cycles (250 V a.c. 2A resistive load)
Insulation resistance		Min. 100 MΩ (500 V d.c. mega, at conductive terminal and non-charged metal which is exposed)
Dielectric strength		2000 V a.c. 60 Hz for 1 minute (at conductive terminal and non-charged metal which is exposed)
Noise immunity		±2kV (between the power terminals, pulse width = 1 us, square wave noise by noise simulator)
Vibration resistance (durability)		10 - 55 Hz (1 minute) 0.75mm double amplitude 0.75 in each X, Y, Z direction for 2 hours
Shock resistance (durability)		300 m/s <sup>2</sup> (30G) in each X, Y, Z direction for 3 times
Operating ambient temperature		-10 ~ 55 °C (without condensation)
Accessories		■Fixing Bracket ■BRACKET-M (48.0 X 59.0 mm) flush type bracket
Accessories (separately sold)		■BRACKET-S (48.0 X 48.0 mm) bracket for adjusting size (flush type) ■BRACKET-L (53.5 X 84.4 mm) bracket for adjusting size (flush type)
Weight		Approx. 79 g (Exposure type)
Approval		

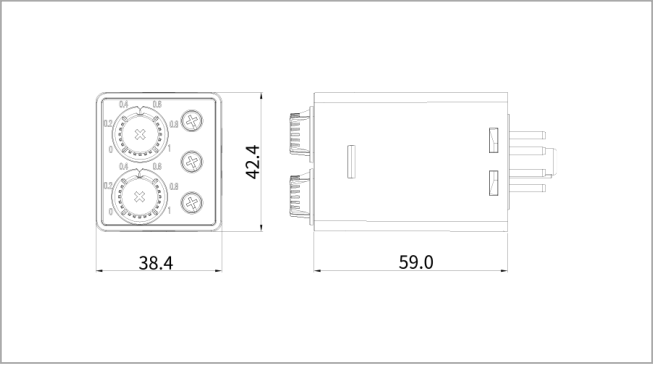
## Suffix code

Model	Code				Description	Product configuration
TF62A	<input type="checkbox"/> -	<input type="checkbox"/>	<input type="checkbox"/> -	<input type="checkbox"/>	Analog twin timer 38.4(W) X 42.4(H) X 59.0(D) mm	<ul style="list-style-type: none"> <li>• TF62A-1N-A</li> <li>• TF62A-3N-A</li> <li>• TF62A-6N-A</li> </ul>
Time range		1			Maximum time : 1sec / 1min / 1hour / 10sec / 10min / 10hour	
		3			Maximum time : 3sec / 3min / 3hour / 30sec / 30min / 30hour	
		6			Maximum time : 6sec / 6min / 6hour / 60sec / 60min / 60hour	
Control output			N		No option	
power voltage				A	24 - 240 V a.c. 50/60 Hz or 24 - 240 V d.c.	

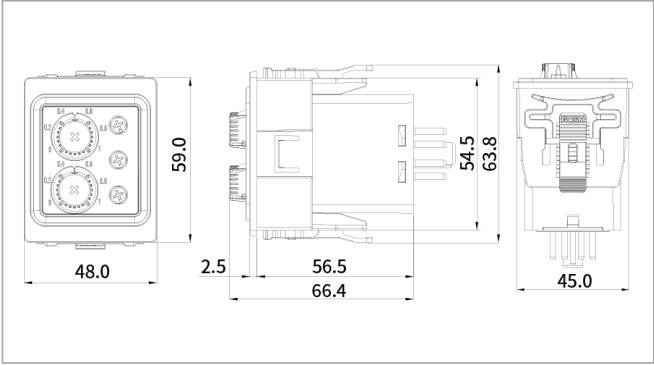
## Dimension & Panel cutout

[Unit : mm]

### Exposure type

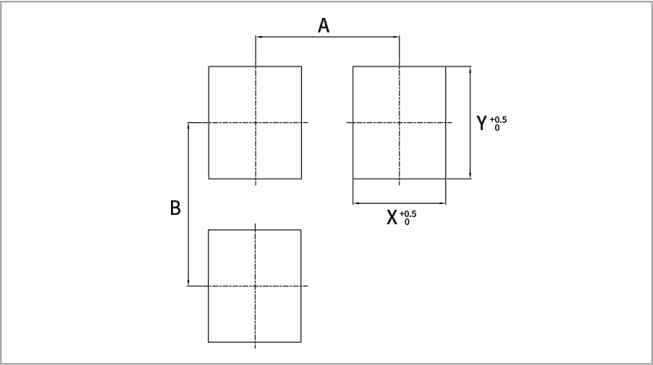


### Flush type



\* Application of BRACKET-M (BRACKET-S/L refer to the chart below)

### Panel cutout



[Unit : mm]

Assortment	Indication	S	M	L
Panel cutout	X	45.0	45.5	51.0
	Y	45.0	55.0	63.0
	A	60.0	70.5	60.0
	B	60.0	80.0	86.0

## Bracket

[Unit : mm]

### Fixed Bracket

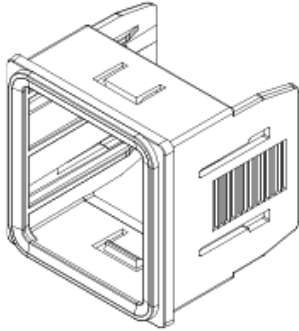


	Product name	BRACKET-SCO
	Type	Fixing
	Size	-
	Order code	FIXING BRACKET SCO
	Compatible Products	T38A / T48A / TF62A

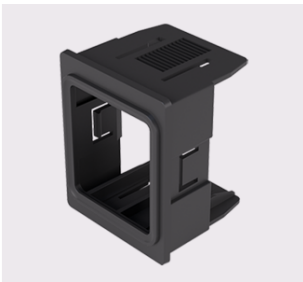
### Bracket-S (separately sold)

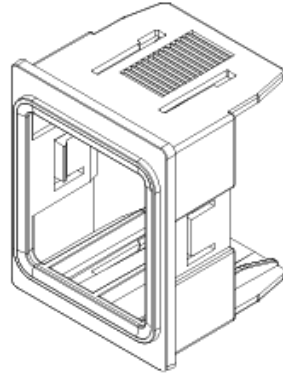
\* bracket for adjusting size (flush type)



	Product name	BRACKET-S
	Type	Flush
	Size	48.0 x 48.0 mm
	Order code	T38A / TF62A BRACKET-S
	Compatible Products	T38A / TF62A

## ■ Bracket-M

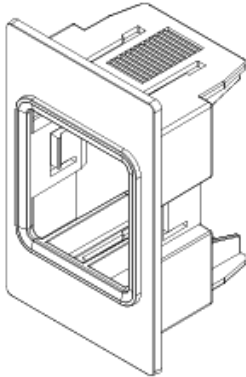


	Product name	BRACKET-M
	Type	Flush
	Size	48.0 X 59.0 mm
	Order code	T38A/TF62A BRACKET-M
	Compatible Products	T38A / TF62A

## ■ Bracket-L (separately sold)

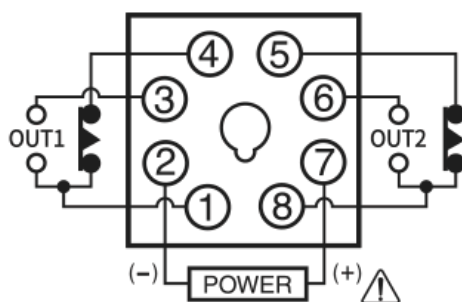
※ bracket for adjusting size (flush type)



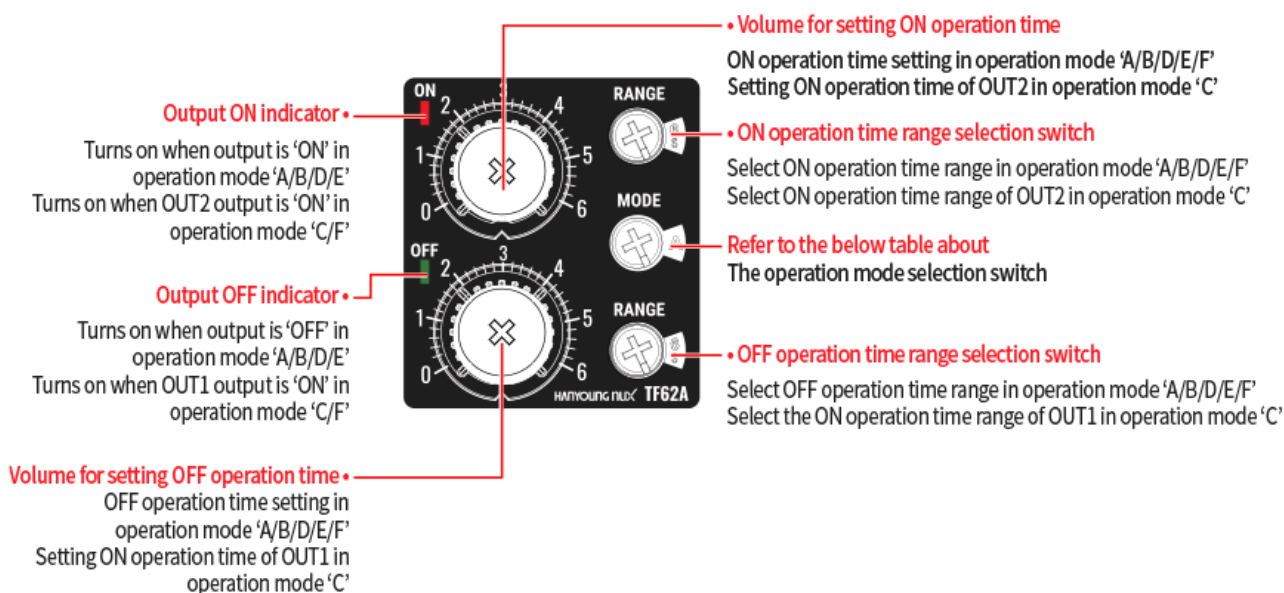
	Product name	BRACKET-L
	Type	Flush
	Size	53.5 x 84.4 mm
	Order code	T38A/TF62A BRACKET-L
	Compatible Products	T38A / TF62A

## ■ Connection diagram

※ OUT1 output operates as instantaneous output in operation mode 'B/E'.



## Function and name of each part



## ON/OFF operation time range selection switch

\* change after power is off

time range		setting time range
TF62A-1	1 S	0.1 ~ 1 sec
	1 M	0.1 ~ 1 min
	1 H	0.1 ~ 1 hour
	10 S	1 ~ 10 sec
	10 M	1 ~ 10 min
	10 H	1 ~ 10 hour
TF62A-3	3 S	0.3 ~ 3 sec
	3 M	0.3 ~ 3 min
	3 H	0.3 ~ 3 hour
	30 S	3 ~ 30 sec
	30 M	3 ~ 30 min
	30 H	3 ~ 30 hour
TF62A-6	6 S	0.6 ~ 6 sec

	6 M	0.6 ~ 6 min
	6 H	0.6 ~ 6 hour
	60 S	6 ~ 60 sec
	60 M	6 ~ 60 min
	60 H	6 ~ 60 hour

## ■ Operation mode selection switch

※change after power is off

Indication		Output operation mode
TF62A	A	FLICKER ON START (time-limit 2c)
	B	FLICKER OFF START + instantaneous 1c
	C	TWIN (time-limit 1c + time-limit 1c)
	D	FLICKER OFF START (time-limit 2c)
	E	FLICKER ON START + instantaneous 1c
	F	DUAL (time-limit 1c + time-limit 1c) * Same as TF62D output operation of existing product

- When the operating time range is selected as '10 S / 10 M / 10 H, 30 S / 30 M / 30 H, 60 S / 60 M / 60 H', the operating time is converted to x10' from the display time on the front panel and is operated.
- When OFF operation time range is selected as '10sec / 10min / 10 H, 30 S / 30 M / 30 H, 60 S / 60 M / 60 H', OFF operation time is converted to 'x10' from the display time on the front panel and operates.

※ When the switch power is 'ON', both the operation time range and the operation mode are not changed.

(Ex. A -> B / 1 S -> 1 M) Please turn off the switch power and then change it.

