

JITOOOL

Instruction Manual

Brad Nailer

F30

MADE IN KOREA

Better Tools, Better Works!



www.npower.com.vn

Tài liệu được tổng hợp bởi đội ngũ kỹ thuật của
NPOWER Bản quyền nội dung thuộc về công ty
JITOOL

Rev.Apr.2022

Powered by **NAVITECH** | www.navitech.co

CONTENTS (INDEX)

	Page
1. Safety Instructions -----	3
2. Specifications -----	6
3. Instructions for Operation -----	8
4. Maintenance and Inspection -----	10
5. Service and Repairs -----	11
6. Maintenance Chart & Operator Troubleshooting -----	12
7. Exploded Daigram & Part List -----	14

Responsibility of Distributor



When selling this tool, all the salespersons and distributors who deal in the tool must make sure that a consumer reads and understands the instructions before using it.

Responsibility of Employer



All the employers who use this tool must observe safety regulations and all the other guidelines in this manual to keep a user and those around him or her safe and to use it correctly, and must have a user read and understand the instructions before using it.

⚠ DANGER

Dangerous and improper use of the nailer can result in death or serious injury.

This manual features safety information for your safety.

Be sure to read and understand this manual before using this tool.

Please keep this manual well to allow other workers to read it before using this tool.

DEFINITIONS OF SIGNAL WORDS

DANGER

Indicates an imminently hazardous situation which, if not avoided, will result in death or serious injury.

WARNING

Indicates a potentially hazardous situation which, if not avoided, could result in death or serious injury.

CAUTION

Indicates a potentially hazardous situation which, if not avoided, may result in minor or moderate injury, or may cause a damage to the tool.

1. SAFETY INSTRUCTIONS



1. Be sure to put goggles on before operation.



Since a fastener fired wrongly through careless handling can spring out or you are always exposed to danger that can be caused by dust and extraneous substances dispersed by exhausted air, you must always wear goggles for operation. Goggles should meet requirements of **ANSI Z89.1-1997** and be able to protect both the front and the sides. An employer has responsibility for having workers and all the other persons wear protective equipment in a workshop.

2. Put on hearing protective equipment in certain working environment.



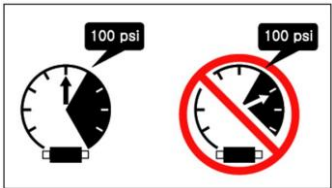
In working environment exposed to loudness which may result in hearing loss, an employer (management) must provide hearing protection equipment to a user and others in the workshop and a worker must wear it if necessary.

3. Never use any power source but compressed air.



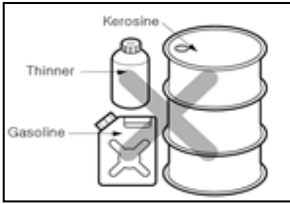
As this tool is designed and manufactured to operate using air pressure that is generated by an air compressor authorized by an safety certification authority, you cannot use any kind of gas—combustible gases such as oxygen and acetylene—except this. Otherwise, it may not only cause mechanical trouble but also malfunction or explosion, resulting in infliction of fatal injury on a user or those around him or her.

4. Use it within the optimum range of air pressure.



This tool is designed to operate within a range of pressure between 58 psi and 100 psi (or between 4 bar and 7 kgf/cm²). Connect this tool to a pressure – controllable device so that you can work under fixed pressure. When operating this tool, never use it under pressure of 100 psi (or 7 kgf/cm²) and over. This tool can blow up when connected to pressure higher than 175 psi (or 12 kgf/cm²).

5. Don't use it near inflammables (combustibles).



Never operate this tool near inflammables (such as thinner and gasoline). Combustible gas from such materials can be sucked into a compressor and compressed together with air, possibly resulting in explosion.

6. Be careful not to aim or fire it toward yourself or any other person in any case.



You should be careful not to aim it toward yourself or any other person in any case whether the tool is loaded with nails or not. Then, even if malfunction or undesired firing occurs, you can minimize damage caused by the fired nail. Otherwise, it may result in serious injury.

7. Never touch the trigger except when this tool is operated for work.

Never touch the trigger except when air is connected to this tool, which operates for work. It is especially very dangerous to change the position or move around during operation with your finger fixed on the trigger, and you may not do any similar action. Otherwise, possible carelessness may result in infliction of serious injury on a user or those around him or her.

⚠ WARNING

8. Connect a proper connector to this tool correctly.

The connector for this tool should never have pressure kept remaining when air supply is cut off. If an improper part is applied, then the tool can operate due to pressure left within it even after the air line is disconnected, possibly resulting in injury.

9. Disconnect the air line and empty the nails out of the container in case that the tool isn't used.

Be sure to cut off air supply and empty the nail container when the work is completed or when you move to another workshop, maintain, disassemble, or repair this tool, or clear jam. Make sure that the air line is disconnected in loading the container with nails again.

⚠ CAUTION

10. Make sure that each fastener is locked tightly.

The tool can be damaged if you use it with each fastener loosened, or screws or bolts assembled wrongly. Make sure that all screws and bolts are assembled correctly and tightly before using the tool.

11. Never let a worker remove or manipulate a safety device, or recompose the tool at his or her discretion.

If you remove a safety device, or manipulate or recompose the tool at will, it can cause a drop in performance and breakdown of the tool and result in injury due to mechanical trouble and malfunction.

12. Be sure to disconnect the air line and empty nails out of the container if the tool is not used.

You must disconnect the air line and empty the nail container when the work is completed or suspended, when you go out of a workshop, when you move or transfer the tool, or on other occasions.

13. Stick the muzzle correctly to the target plane for nailing.

If correct nailing is not implemented on the target plane, the fired nail can spring out, possibly resulting in injury.

14. You are prohibited from using the tool for other purposes than nailing and from throwing or dropping it.

The resultant shock can cause damage to main parts or malfunction, possibly resulting in injury.

15. Never nail hard or thin objects, an edge of the target surface, or a nailhead already driven.

Otherwise, the nail fails to be driven in but springs out, thus inflicting an injury on a worker or those around him or her.

16. Conduct operations in an upright and safe position all the time.

Long-time work in an unstable and wrong position may put excessive stress on the body, possibly resulting in an injury.

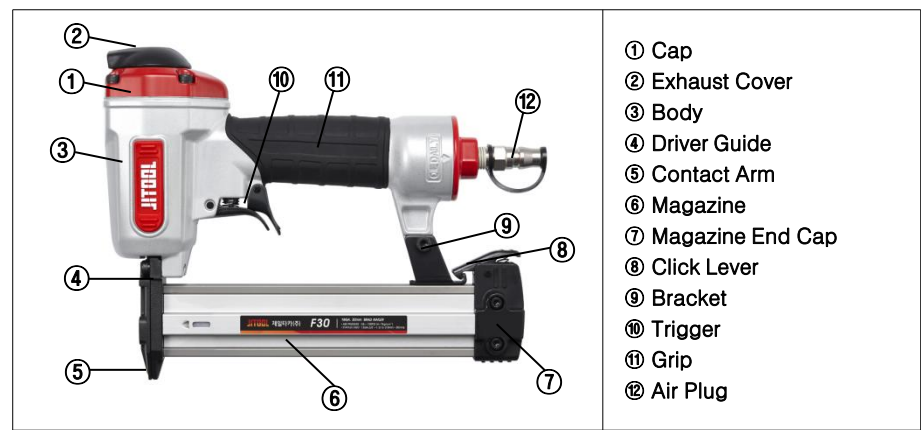
17. When the temperature falls below zero, it is important to note that you should keep the tool warm in a safe and convenient way.

If you fail to do this, make the tool get warm according to the following procedure.

- ① Control air pressure in the range of 40psi to 70psi.
- ② Remove all the nails loaded in the tool.
- ③ Connect the air line to the tool and try mock nailing.
 - Keep pressure low enough to operate the tool in a proper way.
 - Operate it slowly to let the actuator get warm.
 - Piston operation helps bumper and O-ring maintain the original elasticity.

2. SPECIFICATIONS

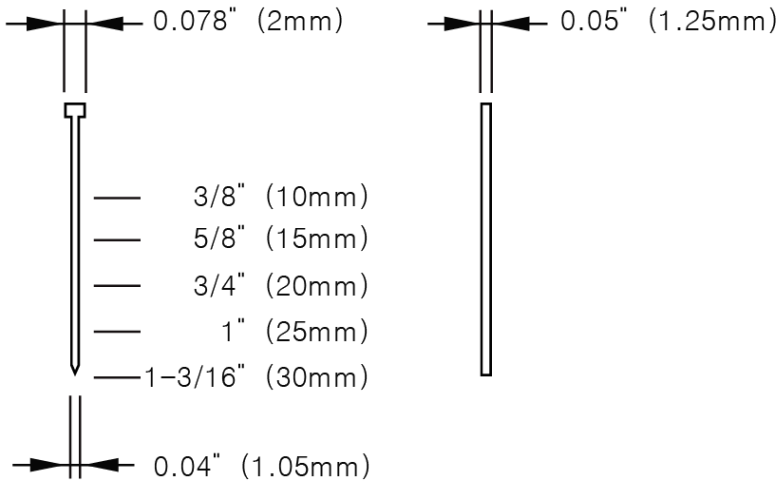
1. Name of Parts



2. Specifications of Nailer

Dimensions (Length×Height×Width)	9-13/16" x 7-7/16"× 2-3/8" (250mm × 189mm × 60mm)
Weight	2.42 lbs (1.1 kg)
Operating Pressure	58~100psi (4 ~ 7 kgf/cm ²)
Nail Capacity	100 Nails
Nail Spec	(F10, F15, F20, F25, F30)
Air Inlet	1/4" NPT

3. Fastener Specifications



4. Applications

- * Molding & Decorative Trim
- * Furniture Trim
- * Window Beading
- * Blind Pinning of Upholstered
- * Rattan Furniture
- * Picture Frame Assembly
- * Interior Trim & Exterior Trim

3. Instructions for Operation

<Instructions for Operation>

※ Be sure to read the safety instructions before using this tool.

Preparations

1. Be sure to put on personal protective equipments—for example, goggles, earplugs, safety cap—before using this tool.
2. Be sure to use an air compressor authorized by the safety certification authority as a pressure source for operating this tool within the optimum range of pressure (58~100psi).
3. Make sure that this tool has no trouble about the safety device, the trigger, fasteners such as bolts, and so on.
4. Inject three or four drops of oil used exclusively for a nailer into the air plug before using this tool. (Do this regularly once a day if possible.)
5. Check the air line and the air connector for damage and don't use longer air line than necessary (no more than 5m).

Preliminary Checkup

1. To give a checkup to the tool, adjust the operating pressure to 58 psi (4 kgf/cm²) before air connection.
2. Keep pressure low as far as it may cause no trouble in operation With in the optimum range of pressure according to hardness of the working plane and length of nails.

1. Loading nails

WARNING

Turn the muzzle downward and never pull the trigger in loading or unloading nails.

- 1) Pull the magazine backward with the click lever pressed.
- 2) Load nails from the side of the magazine.
- 3) Keep pushing the magazine until it is fixed in the click lever.



2. Unloading nails

- 1) Pull the magazine backward with the click lever pressed.
- 2) Unload nails from the side of the magazine.
- 3) Keep pushing the magazine until it is fixed in the click lever.

4. Maintenance and Inspection

<Caution prior to inspection and maintenance>

※ Be sure to read the safety instruction before inspecting or maintaining this tool.

WARNING

Be sure to disconnect the air line before clearing jam, or repairing or inspecting the tool.

1. Clearing a Jam

If jam occurs during the nailing process, clear it according to the following procedure.

- 1) Disconnect the air line from the tool.
- 2) Unload nails left in the magazine.
- 3) Open the guide cover B.
- 4) Use a long nose to remove a nail caught in.



CAUTION

- After clearing jam, make sure that the product has no trouble before using it.
- If jam or other factors damage main parts, it can prevent normal operation.
- If any trouble occurs, stop using the tool and ask a nearby A/S center or a distributor for A/S.

2. Inspecting the Magazine

- 1) Disconnect the air line from the tool.
- 2) Inspect if the inside of the magazine is cleared or damaged.
(Dust or alien substances such as pieces of wood in the operation body of the pusher within the magazine can prevent smooth operation.)

3. Storing

- 1) When not in use for an extended period, apply a thin coat of the lubricant to the steel parts to avoid rust.
- 2) Do not store the tool in a cold weather environment. Keep the tool in a warm area.
- 3) When not in use, the tool should be stored in a warm and dry place. Keep out of reach of children.
- 4) All quality tools will eventually require servicing or replacement of parts because of wear from the normal use.

4. Maintenance Chart (Reference)

5. Operator Troubleshooting (Reference)



★ Supplement to the operating instruction

According to the European Norm EN 792-13 the regulation is valid from 01.01.2001 that all fastener driving tools with contact actuation must be marked with the symbol "Do not use on scaffoldings, ladders" and they shall not be used for specific application for example:

- When changing one driving location to another involves the use of scaffoldings, stairs, ladders or ladder alike constructions e.g. roof laths,
- * closing boxes or crates,
- * fitting transportation safety systems e.g. on vehicles and wagons.

5. Service and Repairs (A/S Request)

WARNING

- It is important to note that users or distributors who want to have this tool repaired must get A/S from A/S personnel trained in JITOOL.
- Use only parts supplied or authorized by JITOOL for repair.

6. Maintenance Chart & Operator Troubleshooting

1) Maintenance Chart

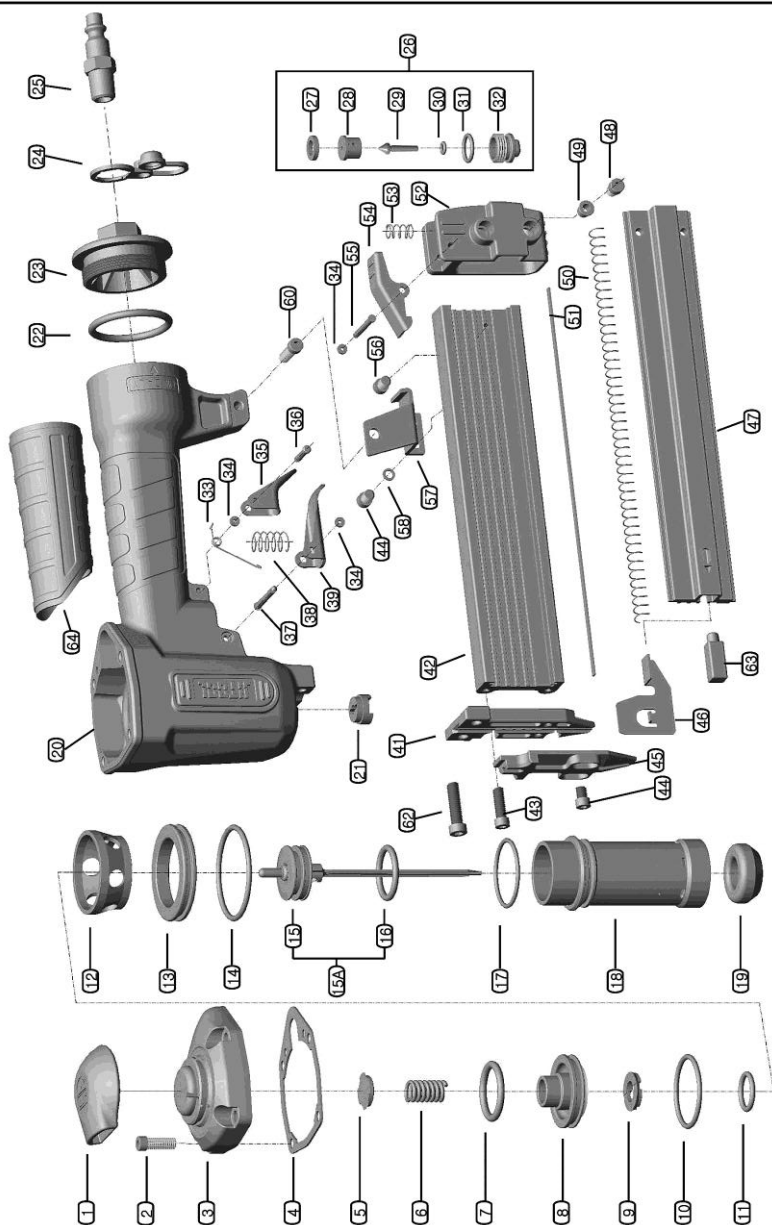
Practice	Reason	Method
Drain air line filter daily	Prevent accumulation of moisture and dirt.	Open manual petcock.
Keep lubricator filled.	Keep the tool lubricated	Fill with JITOOL pneumatic tool lubricant.
Clean magazine and feeder mechanism.	Prevent a jam & Dry fire.	Blow clean daily.
Lubricate the Tool after nailing.	Extend the tool life.	Supply 3~4 drops of lubricant into the tool.
Drain air compressor.	Keep the tool operated properly.	Open petcock on air compressor tank.

2) Operator Troubleshooting

Problem	Check Method	Correction
Tool operates, but no nail is driven.	Check air pressure.	Reduce air pressure. (58~100psi)
	Check for a jam.	Clean a jam. (Refer to 4-1)
	Check for proper nail.	Use only recommended nails.
Tool does not operate.	Check air line & Plug	Check for air line connection and damage to fitting part (Change it in case of damage)
	Check for abnormality in head valve	Change O-ring in case of damage

Weak drive. Slow to cycle.	Check air pressure.	Reduce air pressure. (58~100psi)
	Check position Piston set.	Readjust.
	–	Supply of lubricant into the tool.
	Driver blade worn or damaged?	Part change (Contact JITOOL or Distributor)
	Piston O-ring worn or damaged?	
Nail driven too deep or shallow	Check air pressure.	Reduce air pressure. (58~100psi)
Skipping nails, Intermittent feed.	Check air pressure.	Reduce air pressure. (58~100psi)
	Check for proper nail.	Use only recommended nails.
	–	Supply of lubricant into the tool.
	Piston O-ring cut or heavily worn ?	Part change. (Contact JITOOL or Distributor)
Drives properly during normal operation, but does not drive fully at faster nailing speeds.	Check air pressure.	Reduce air pressure. (58~100psi)
	Check inside diameter of air hose.	Use larger air hose.

EXPLODED DIAGRAM OF F30



(REV:2021/11/23)

F30 (18GA. 30mm BRAD NAILER)

NO.	DESCRIPTION	PART NO.	QTY	NO.	DESCRIPTION	PART NO.	QTY
1	EXHAUST COVER	422-C-103	1	31	PLUNGER CAP O-RING	1013-V-011	1
2	BOLT(M5 X 20L)	Z-05-200	4	32	PLUNGER CAP	1013-V-012	1
3	CAP	422-C-101	1	33	SAFETY LEVER SPRING	F30-S-008	1
4	GASKET	422-C-202	1	34	PIN STOPPER O-RING	CT64-M-008	3
5	HEAD VALVE SEAL A	422-H-007	1	35	SAFETY LEVER	F30-S-007	1
6	CAP SPRING	422-H-006	1	36	SAFETY LEVER PIN	F30-S-009	1
7	CAP O-RING	422-H-010	1	37	TRIGGER PIN	422-T-008	1
8	HEAD VALVE	422-H-201	1	38	TRIGGER SPRING	1013-T-106	1
9	HEAD VALVE SEAL B	422-H-008	1	39	TRIGGER	422-T-001	1
10	HEAD VALVE O-RING	422-H-004	1	41	DRIVER GUIDE	F30-G-001	1
11	HEAD SEAL O-RING	422-H-009	1	42	MAGAZINE PART A	F30-M-001	1
12	COLLAR	422-A-004	1	43	BOLT(M4 X 16L)	ZN-04-160	2
13	CYLINDER GUIDE	422-A-002	1	44	BOLT(M4 X 8L)	Z-04-080	4
14	CYLINDER GUIDE O-RING	422-A-006	1	45	GUIDE COVER B	F30-G-002	1
15A	PISTON SET	F30-P-P101	1	46	PUSHER	F30-M-103	1
15	PISTON ASSEMBLY	F30-P-P102	1	47	MAGAZINE PART B	F30-M-002	1
16	PISTON O-RING	422-P-003	1	48	BOLT(M4 X 10L)	Z-04-100	2
17	CYLINDER O-RING	422-A-005	1	49	BUSHING	F30-L-007	2
18	CYLINDER	422-A-001	1	50	PUSHER SPRING	F30-M-004	1
19	BUMPER	422-A-003	1	51	STEEL PLATE	F30-M-005	1
20	BODY	F30-B-501	1	52	MAGAZINE END CAP	F30-L-001	1
21	NOZZLE	F30-B-007	1	53	CLICK LEVER SPRING	F30-L-004	1
22	END CAP O-RING	422-B-003	1	54	CLICK LEVER	F30-L-002	1
23	END CAP	422-B-002	1	55	CLICK LEVER PIN	F30-L-003	1
24	AIR PLUG	9032-B-005	1	56	BOLT(M4 x 6L)	Z-04-060	1
25	PLUG CAP	9032-B-006	1	57	BRACKET	F30-M-006	1
26	VALVE SET	422-V-P001	1	58	SPRING WASHER(FOR M4)	W-04	2
27	VALVE SEAL	422-V-013	1	60	BOLT(M5 X 14L)	Z-05-140	1
28	VALVE PLUNGER	1013-V-007	1	62	BOLT(M5x18)	Z-05-180	2
29	PLUNGER	1013-V-110	1	63	PUSHER HOLDER	F30-M-013	1
30	PLUNGER O-RING	CT64-V-008	1	64	GRIP	422-B-104	1

** All the parts of nailer can be changed for improvement and re-design without announcement.

(REV. : 2021/11/23)

Better Tools, Better Works!



JITOOL KOREA

18, Jikdong-ro, Gwangju-si, Gyeonggi-do 464-090, Korea

Tel. +82-2-445-2500 Fax. +82-2-445-2506

E-mail. jitool@jitool.com / www.jitool.com

JITOOL USA CORP.

14408 Iseli Road, Santa Fe Springs,

CA 90670, USA

Tel. +1-562-404-8740 Fax. +1-562-404-8490