

Product Information

73 06 160

KNIPEX X-Cut®

Compact Diagonal Cutter

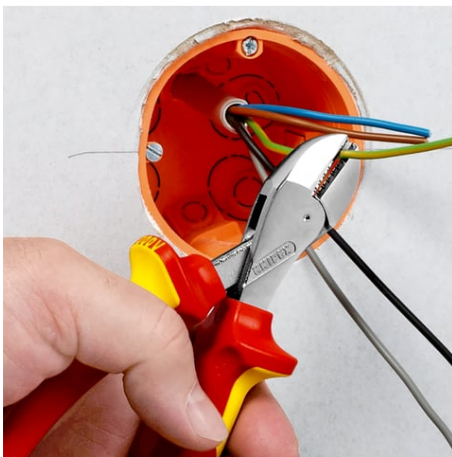
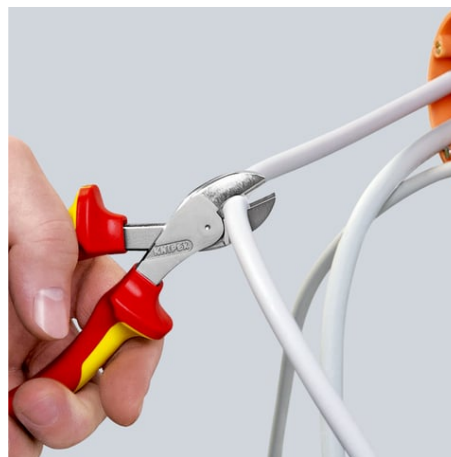
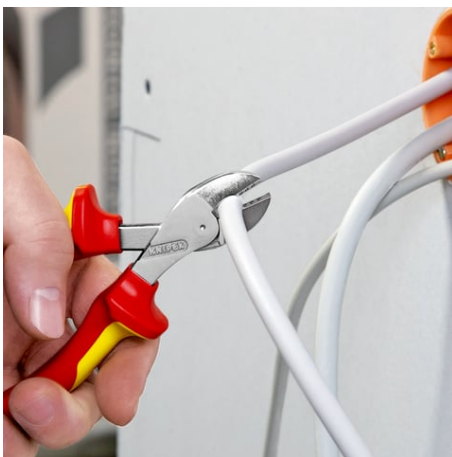
High lever transmission



- Cuts finest strands as well as multi-core cables and piano wires
- Powerful, light and universal
- High cutting performance with minimum effort due to optimum coordination of the cutting edge angle and transmission ratio
- Box-joint design: highest stability with low weight
- Doubly supported joint axis for heavy duty
- Large opening width for thicker cables
- Cuts precisely, even through fine copper wires
- Compact, low-weight construction
- Universally usable, in the assembly, maintenance and production
- 40% less force required compared with standard diagonal cutters of the same length
- Precision cutting edges also induction-hardened (hardness approx. 62 HRC), for all wire types including piano wire

General	
Article No.	73 06 160
EAN	4003773075141
pliers	chrome-plated
Head	chrome-plated
Handles	insulated with multi-component grips, VDE-tested
Weight	175 g
Dimensions	160 x 60 x 28 mm
Standard	DIN ISO 5749 DIN EN 60900 IEC 60900
REACH compliant	does not contain SVHC
RoHS compliant	not applicable
Technical details	
Cutting capacities soft wire (diameter)	Ø 4 mm
Cutting capacities medium hard wire (diameter)	Ø 3.8 mm
Cutting capacities hard wire (diameter)	Ø 2.7 mm
Cutting capacities piano wire (diameter)	Ø 2.2 mm
Cutting capacity copper cable, multiple-stranded	Ø 12.0 mm
VDE tested	yes

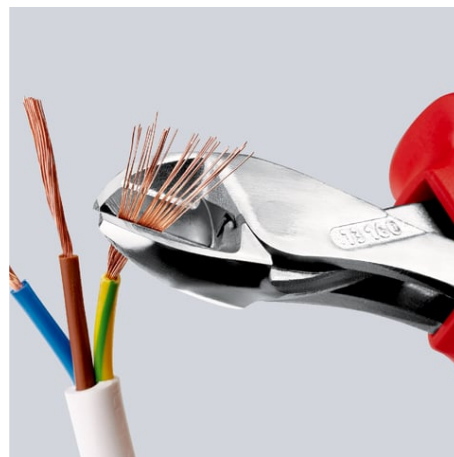
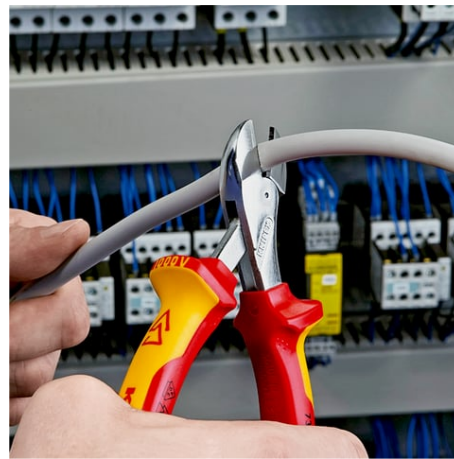
Technical changes and errors excepted



www.npower.com.vn

Tài liệu được tổng hợp bởi đội ngũ kỹ thuật của **NPOWER**
Bản quyền nội dung thuộc về công ty **KNIPEX**





Product Information

73 06 160 T

KNIPEX X-Cut®

Compact Diagonal Cutter



1000V



- Cuts finest strands as well as multi-core cables and piano wires
- Powerful, light and universal
- High cutting performance with minimum effort due to optimum coordination of the cutting edge angle and transmission ratio
- Box-joint design: highest stability with low weight
- Doubly supported joint axis for heavy duty
- Large opening width for thicker cables
- Cuts precisely, even through fine copper wires
- Compact, low-weight construction
- Universally usable, in the assembly, maintenance and production
- 40% less force required compared with standard diagonal cutters of the same length
- Pliers with integrated, insulated tether attachment point for a tool tether

General	
Article No.	73 06 160 T
EAN	4003773081487
pliers	chrome-plated
Head	chrome-plated
Handles	insulated with multi-component grips, VDE-tested with integrated insulated tether attachment point
Weight	185 g
Dimensions	160 x 56 x 27 mm
Standard	DIN ISO 5749 DIN EN 60900 IEC 60900
REACH compliant	does not contain SVHC
RoHS compliant	not applicable
Technical details	
Cutting capacities soft wire (diameter)	Ø 4 mm
Cutting capacities medium hard wire (diameter)	Ø 3.8 mm
Cutting capacities hard wire (diameter)	Ø 2.7 mm
Cutting capacities piano wire (diameter)	Ø 2.2 mm
Cutting capacity copper cable, multiple-stranded	Ø 12.0 mm
Drop Protection System	yes
VDE tested	yes

Technical changes and errors excepted

