

Product Information

87 03 125

KNIPEX Cobra®
 High-Tech Water Pump Pliers

- Push the button for adjustment on the workpiece
- Fine adjustment for optimum adaptation to different sizes of workpieces and a comfortable handle width
- Self-clamping on pipes and nuts: no slipping on the workpiece, effortless working
- Gripping surfaces with special hardened teeth, teeth hardness approx. 61 HRC: high wear resistance and stable gripping
- Box-joint design for high stability due to double guide
- Reliable catching of the hinge bolt: no unintentional shifting
- Pinch guard prevents operators' fingers being pinched



General	
Article No.	87 03 125
EAN	4003773073949
pliers	chrome-plated
Head	chrome-plated
Handles	with non-slip plastic coating
Weight	85 g
Dimensions	125 x 38 x 14 mm
Standard	DIN ISO 8976
REACH compliant	does not contain SVHC
RoHS compliant	not applicable
Technical details	
Adjustment positions	13
Capacities for pipes (diameter)	Ø 1 Inch
Capacities for nuts	27 mm
Capacities for pipes (diameter)	Ø 29 mm

Technical changes and errors excepted

www.npower.com.vn
 Tài liệu được tổng hợp bởi đội ngũ kỹ thuật của **NPOWER**
 Bản quyền nội dung thuộc về công ty **KNIPEX**







Product Information

87 03 180

KNIPEX Cobra®

High-Tech Water Pump Pliers

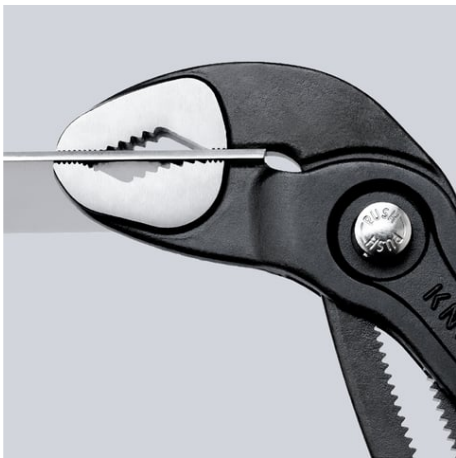
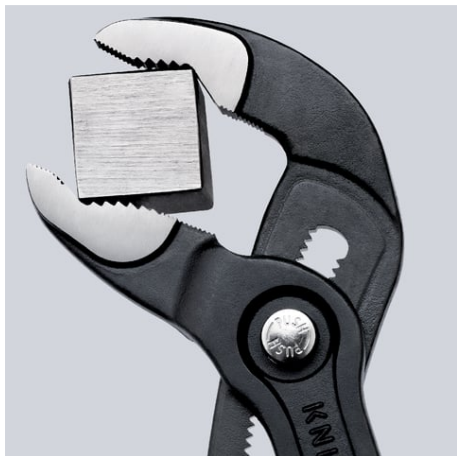
- Push the button for adjustment on the workpiece
- Fine adjustment for optimum adaptation to different sizes of workpieces and a comfortable handle width
- Self-clamping on pipes and nuts: no slipping on the workpiece, effortless working
- Gripping surfaces with special hardened teeth, teeth hardness approx. 61 HRC: high wear resistance and stable gripping
- Box-joint design for high stability due to double guide
- Reliable catching of the hinge bolt: no unintentional shifting
- Pinch guard prevents operators' fingers being pinched



General	
Article No.	87 03 180
EAN	4003773005667
pliers	chrome-plated
Head	chrome-plated
Handles	with non-slip plastic coating
Weight	175 g
Dimensions	180 x 43 x 13 mm
Standard	DIN ISO 8976
REACH compliant	does not contain SVHC
RoHS compliant	not applicable
Technical details	
Adjustment positions	18
Capacities for pipes (diameter)	Ø 1 1/2 Inch
Capacities for nuts	36 mm
Capacities for pipes (diameter)	Ø 42 mm

Technical changes and errors excepted





Product Information

87 03 250

KNIPEX Cobra®

High-Tech Water Pump Pliers

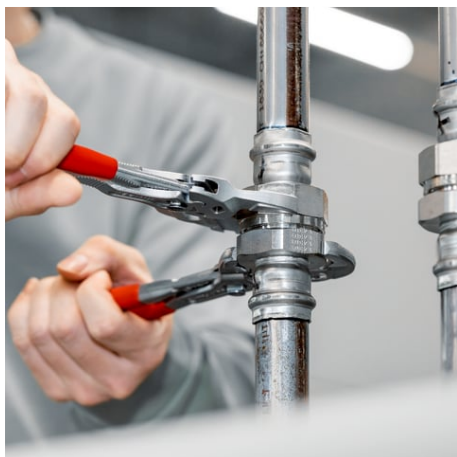
- Push the button for adjustment on the workpiece
- Fine adjustment for optimum adaptation to different sizes of workpieces and a comfortable handle width
- Self-clamping on pipes and nuts: no slipping on the workpiece, effortless working
- Gripping surfaces with special hardened teeth, teeth hardness approx. 61 HRC: high wear resistance and stable gripping
- Box-joint design for high stability due to double guide
- Reliable catching of the hinge bolt: no unintentional shifting
- Pinch guard prevents operators' fingers being pinched



General	
Article No.	87 03 250
EAN	4003773043805
pliers	chrome-plated
Head	chrome-plated
Handles	with non-slip plastic coating
Weight	335 g
Dimensions	250 x 48 x 14 mm
Standard	DIN ISO 8976
REACH compliant	does not contain SVHC
RoHS compliant	not applicable
Technical details	
Adjustment positions	25
Capacities for pipes (diameter)	Ø 2 Inch
Capacities for nuts	46 mm
Capacities for pipes (diameter)	Ø 50 mm

Technical changes and errors excepted







Product Information

87 03 300

KNIPEX Cobra®

High-Tech Water Pump Pliers

- Push the button for adjustment on the workpiece
- Fine adjustment for optimum adaptation to different sizes of workpieces and a comfortable handle width
- Self-clamping on pipes and nuts: no slipping on the workpiece, effortless working
- Gripping surfaces with special hardened teeth, teeth hardness approx. 61 HRC: high wear resistance and stable gripping
- Box-joint design for high stability due to double guide
- Reliable catching of the hinge bolt: no unintentional shifting
- Pinch guard prevents operators' fingers being pinched



General	
Article No.	87 03 300
EAN	4003773041382
pliers	chrome-plated
Head	chrome-plated
Handles	with non-slip plastic coating
Weight	530 g
Dimensions	300 x 62 x 25 mm
Standard	DIN ISO 8976
REACH compliant	does not contain SVHC
RoHS compliant	not applicable
Technical details	
Adjustment positions	30
Capacities for pipes (diameter)	Ø 2 3/4 Inch
Capacities for nuts	60 mm
Capacities for pipes (diameter)	Ø 70 mm

Technical changes and errors excepted



