

Product Information

87 21 250

KNIPEX Cobra® QuickSet
 High-Tech Water Pump Pliers



- Fully open, push, grab!
- Additional fast adjustment on the workpiece by sliding the pliers handle
- Combines the proven, reliable locking of the hinge bolt with an additional push function which makes it easier to work in very confined and inaccessible areas
- The adjustment directly on the workpiece is possible by simply sliding the pliers handle
- Reliable locking of the hinge bolt with the first workload. The gripping width of the pliers is then fixed and can only be adjusted by pressing the button.
- To re-activate the sliding function, the hinge bolt must be released by pressing the push button and the pliers must be completely opened again
- Self-clamping on pipes and nuts: no slipping on the workpiece, effortless working
- Gripping surfaces with special hardened teeth, teeth hardness approx. 61 HRC: high wear resistance and stable gripping
- Box-joint design for high stability due to double guide
- Pinch guard prevents operators' fingers being pinched

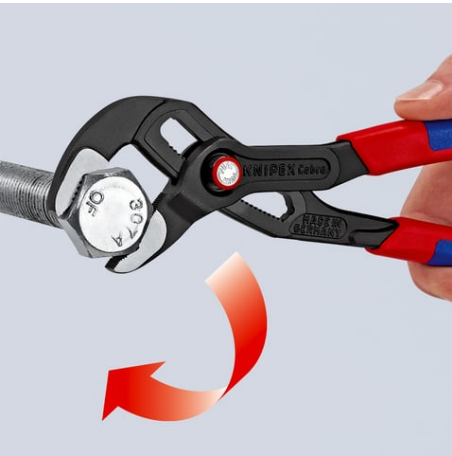
General	
Article No.	87 21 250
EAN	4003773072775
pliers	grey atramentized
Head	polished
Handles	with non-slip plastic coating
Weight	335 g
Dimensions	250 x 59 x 20 mm
Standard	DIN ISO 8976
REACH compliant	does not contain SVHC
RoHS compliant	not applicable
Technical details	
Adjustment positions	25
Capacities for pipes (diameter)	Ø 2 Inch
Capacities for nuts	46 mm
Capacities for pipes (diameter)	Ø 50 mm

Technical changes and errors excepted

www.npower.com.vn

Tài liệu được tổng hợp bởi đội ngũ kỹ thuật của **NPOWER**
 Bản quyền nội dung thuộc về công ty **KNIPEX**

Powered by **NAVITECH** | www.navitech.co



Product Information

87 21 300

KNIPEX Cobra® QuickSet

High-Tech Water Pump Pliers



- Fully open, push, grab!
- Additional fast adjustment on the workpiece by sliding the pliers handle
- Combines the proven, reliable locking of the hinge bolt with an additional push function which makes it easier to work in very confined and inaccessible areas
- The adjustment directly on the workpiece is possible by simply sliding the pliers handle
- Reliable locking of the hinge bolt with the first workload. The gripping width of the pliers is then fixed and can only be adjusted by pressing the button.
- To re-activate the sliding function, the hinge bolt must be released by pressing the push button and the pliers must be completely opened again
- Self-clamping on pipes and nuts: no slipping on the workpiece, effortless working
- Gripping surfaces with special hardened teeth, teeth hardness approx. 61 HRC: high wear resistance and stable gripping
- Box-joint design for high stability due to double guide
- Pinch guard prevents operators' fingers being pinched



General	
Article No.	87 21 300
EAN	4003773078524
pliers	grey atramentized
Head	polished
Handles	with non-slip plastic coating
Weight	530 g
Dimensions	300 x 52 x 19 mm
Standard	DIN ISO 8976
REACH compliant	does not contain SVHC
RoHS compliant	not applicable
Technical details	
Adjustment positions	25
Capacities for pipes (diameter)	Ø 2 3/4 Inch
Capacities for nuts	60 mm
Capacities for pipes (diameter)	Ø 70 mm

Technical changes and errors excepted

