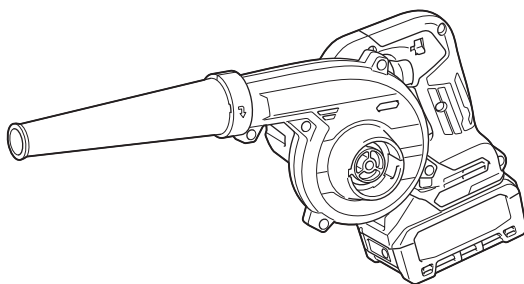
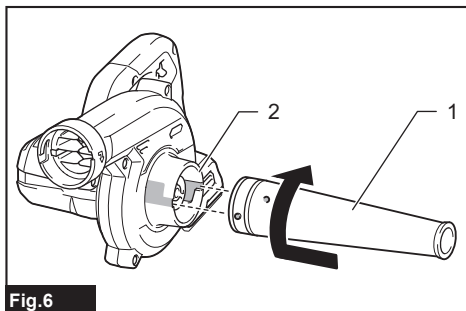
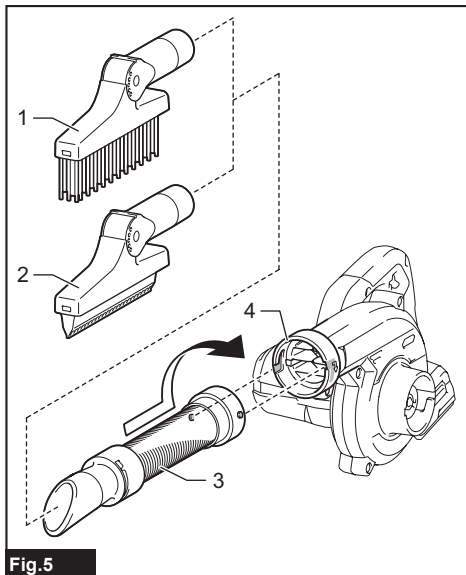
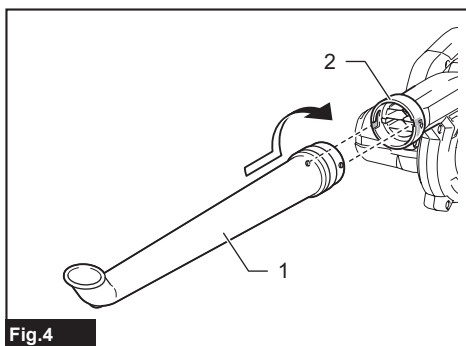
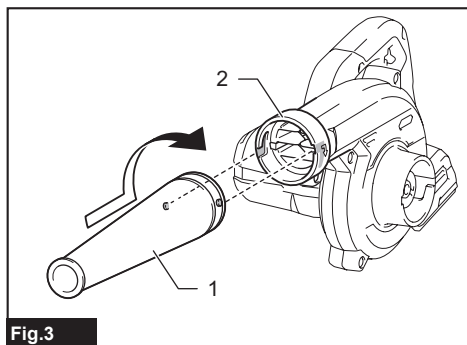
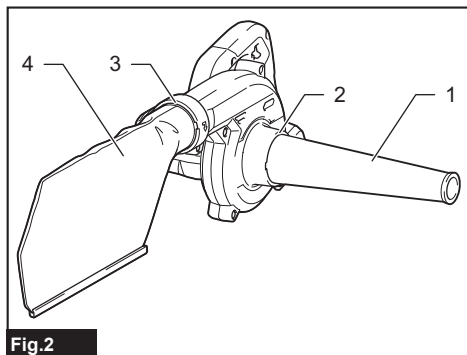
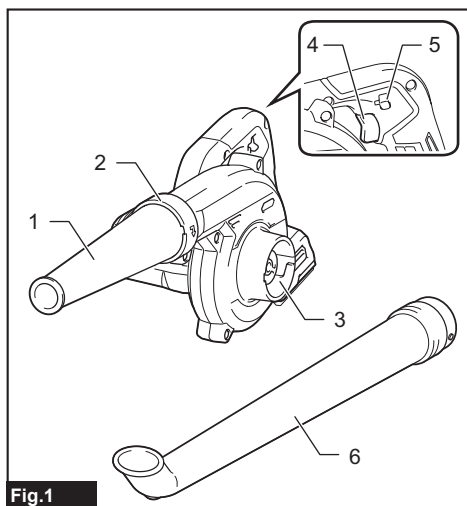




EN	Cordless Blower	INSTRUCTION MANUAL	5
ZHCN	充电式吹风机	使用说明书	14
ID	Blower Tanpa Kabel	PETUNJUK PENGGUNAAN	23
MS	Penghembus Tanpa Kord	MANUAL ARAHAN	33
VI	Máy Thổi Cầm Tay Hoạt Động Bằng Pin	TÀI LIỆU HƯỚNG DẪN	42
TH	เครื่องเป่าลมไร้สาย	คู่มือการใช้งาน	51

UB002G





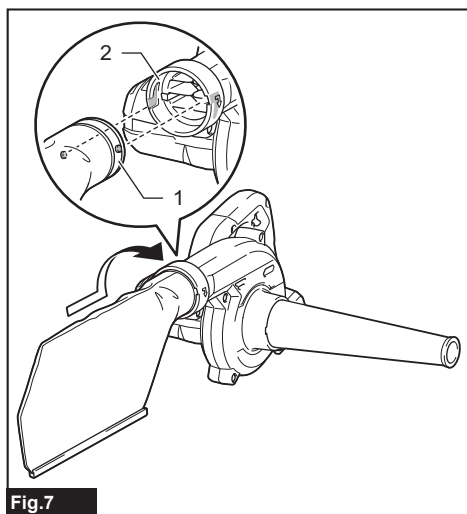


Fig.7

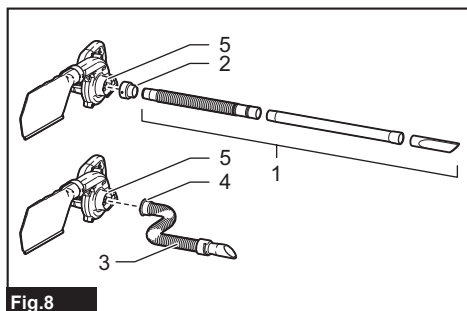


Fig.8

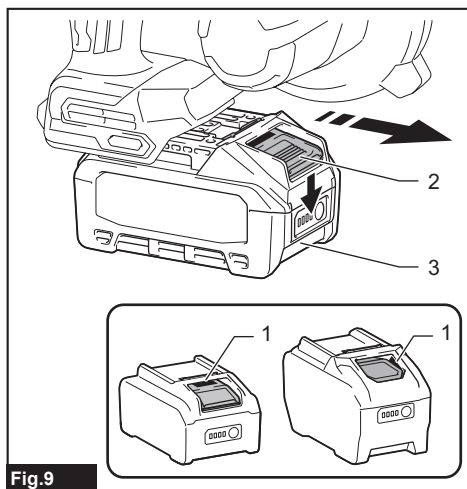


Fig.9

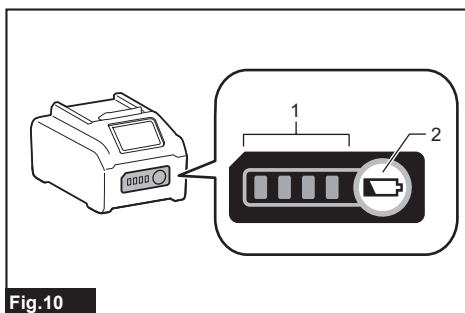


Fig.10

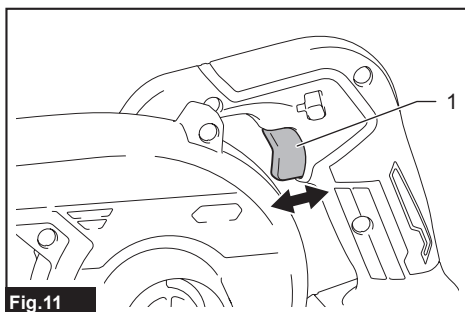


Fig.11

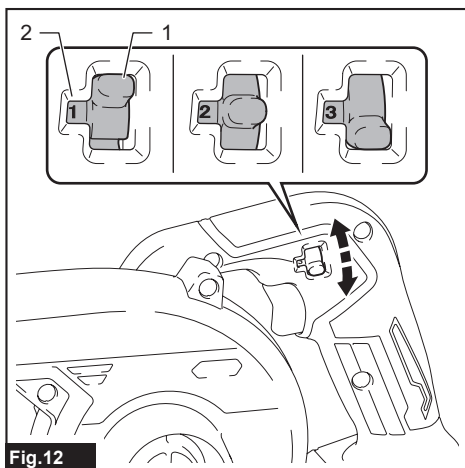


Fig.12

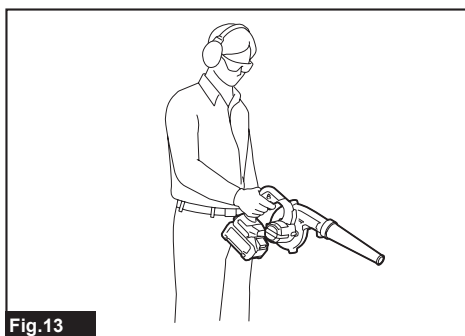
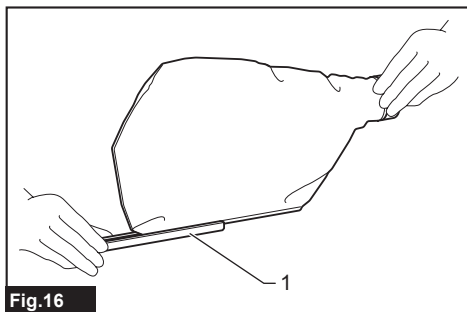
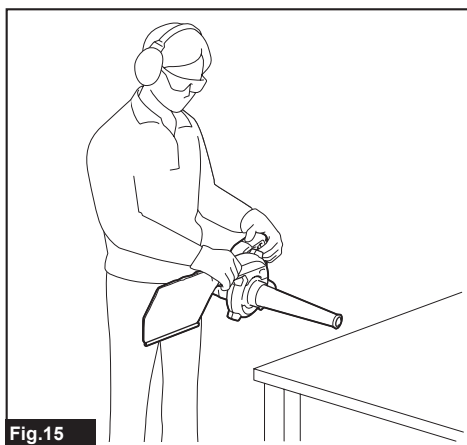
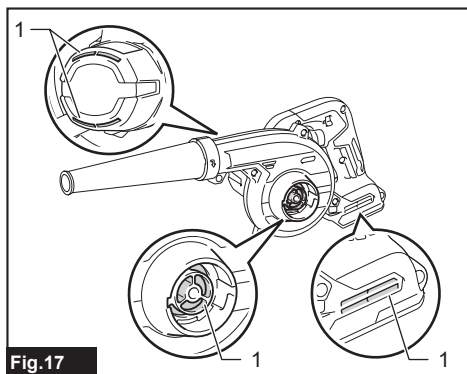
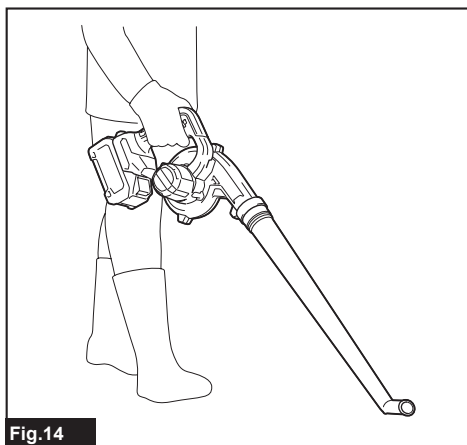


Fig.13



SPECIFICATIONS

Model:		UB002G
Capacities	Air volume ^{*1}	0 - 3.6 m³/min
	Air speed (average) ^{*2}	0 - 81 m/s
	Air speed (max.) ^{*2}	0 - 99 m/s
Overall length ^{*3}		516 mm
Rated voltage		D.C. 36 V - 40 V max
Net weight	^{*4}	1.3 kg
	^{*5}	2.0 - 3.5 kg

^{*1} Without nozzles

^{*2} With nozzle

^{*3} With nozzle and battery cartridge BL4040, and without dust bag

^{*4} Weight without any optional accessories and battery cartridge(s)

^{*5} The weight may differ depending on the attachment(s), including the battery cartridge. The lightest and heaviest combination are shown in the table.

- Due to our continuing program of research and development, the specifications herein are subject to change without notice.
- Specifications may differ from country to country.

Applicable battery cartridge and charger








Battery cartridge	BL4020* / BL4025* / BL4040* / BL4040F* / BL4050F / BL4080F * : Recommended battery
Charger	DC40RA / DC40RB / DC40RC / DC40WA / BCC01 / BCC02

- Some of the battery cartridges and chargers listed above may not be available depending on your region of residence.

⚠WARNING: Only use the battery cartridges and chargers listed above. Use of any other battery cartridges and chargers may cause injury and/or fire.

Symbols

The followings show the symbols which may be used for the equipment. Be sure that you understand their meaning before use.

	Take particular care and attention.
	Read instruction manual.
	Keep hands away from rotating parts.
	Long hair may cause entanglement accident.
	Keep bystanders away.
	Wear eye and ear protection.
	Do not expose to moisture.



A representative battery applicable to this product.



Ni-MH
Li-ion

Only for EU countries
Due to the presence of hazardous components in the equipment, waste electrical and electronic equipment, accumulators and batteries may have a negative impact on the environment and human health. Do not dispose of electrical and electronic appliances or batteries with household waste!
In accordance with the European Directive on waste electrical and electronic equipment and on accumulators and batteries, and waste accumulators and batteries, as well as their adaptation to national law, waste electrical equipment, batteries and accumulators should be stored separately and delivered to a separate collection point for municipal waste, operating in accordance with the regulations on environmental protection.
This is indicated by the symbol of the crossed-out wheeled bin placed on the equipment.