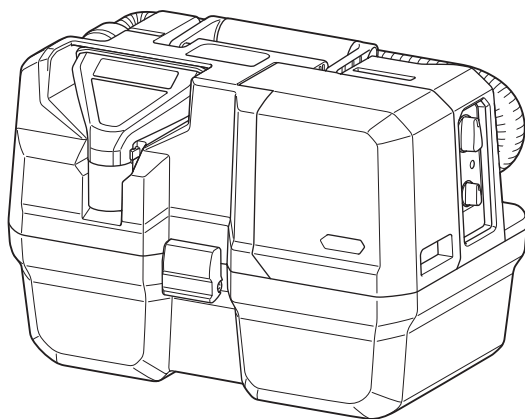
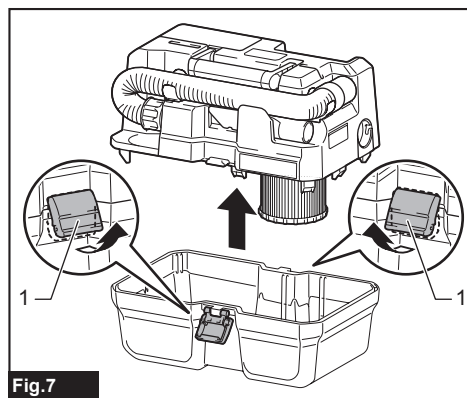
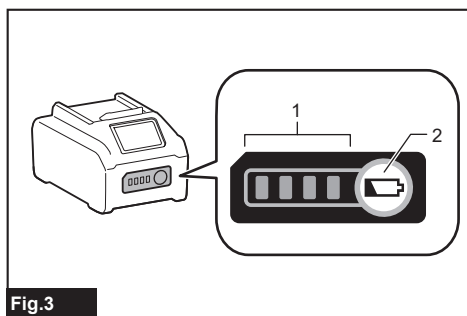
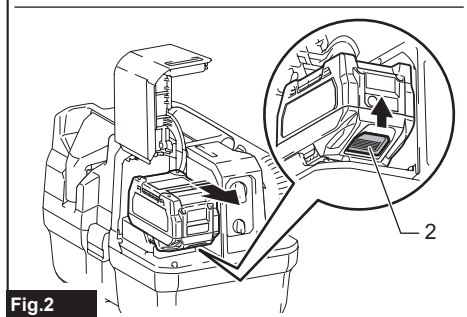
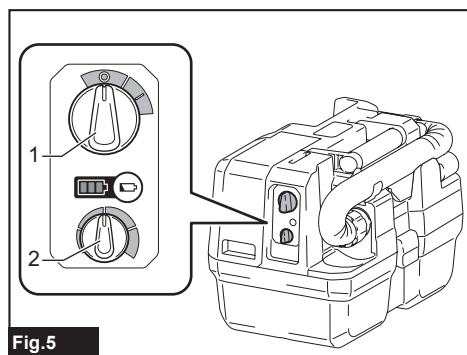
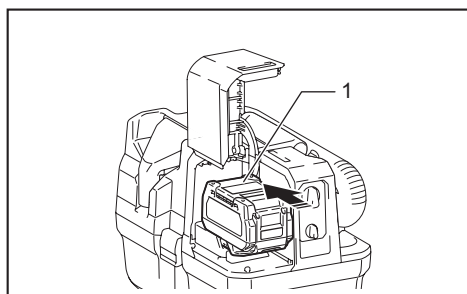
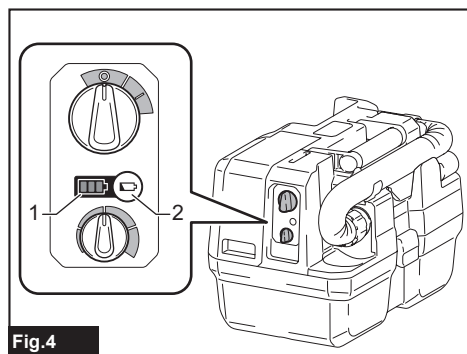
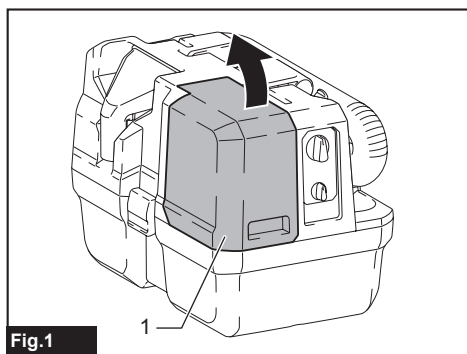




<b>EN</b>	<b>Cordless Vacuum Cleaner</b>	<b>INSTRUCTION MANUAL</b>	<b>8</b>
<b>ZHCN</b>	<b>充电式小型集尘器</b>	<b>使用说明书</b>	<b>17</b>
<b>ID</b>	<b>Pengisap Debu Tanpa Kabel</b>	<b>PETUNJUK PENGGUNAAN</b>	<b>27</b>
<b>MS</b>	<b>Pembersih Hampagas Tanpa Wayar</b>	<b>MANUAL ARAHAN</b>	<b>37</b>
<b>VI</b>	<b>Máy Hút Bụi Cầm Tay Hoạt Động Bằng Pin</b>	<b>TÀI LIỆU HƯỚNG DẪN</b>	<b>47</b>
<b>TH</b>	<b>เครื่องดูดฝุ่นไร้สาย</b>	<b>คู่มือการใช้งาน</b>	<b>56</b>

## VC014GL





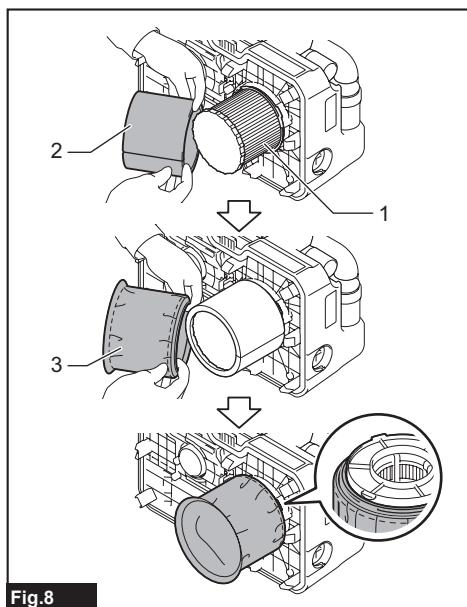


Fig.8

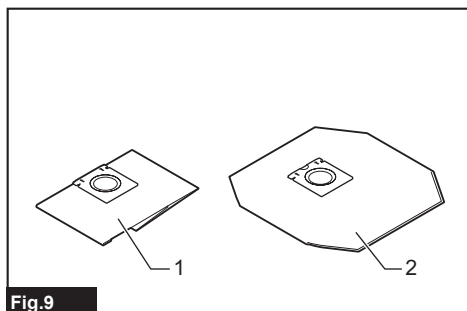


Fig.9

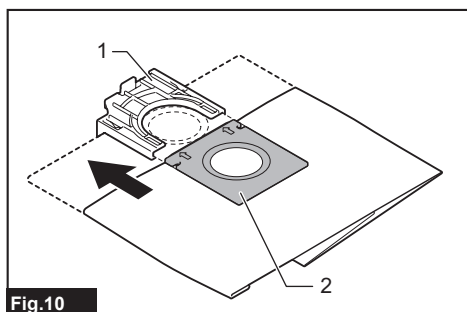


Fig.10

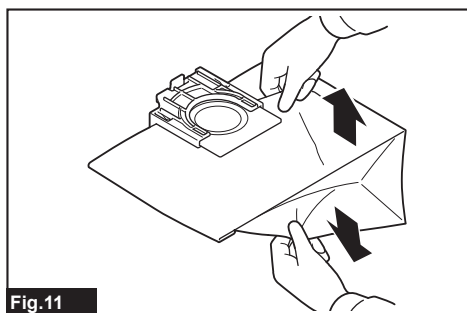


Fig.11

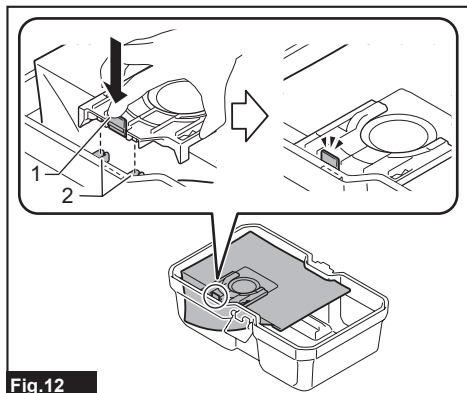


Fig.12

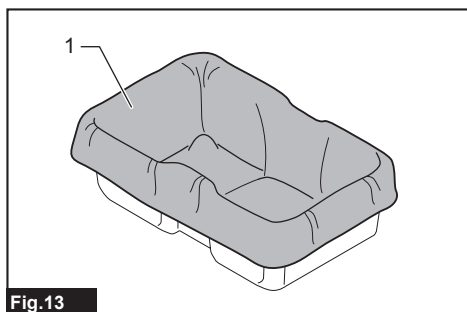


Fig.13

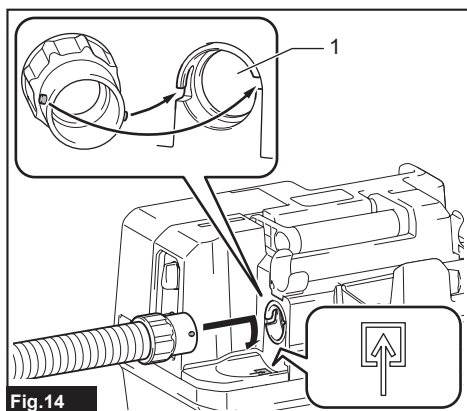


Fig.14

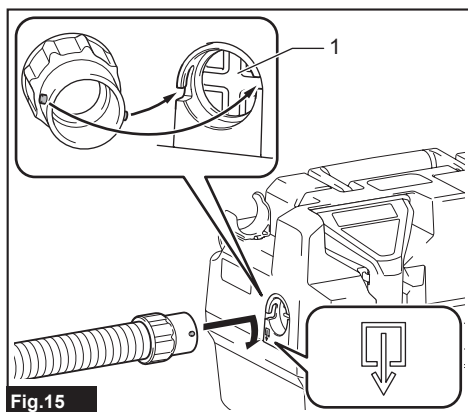


Fig.15

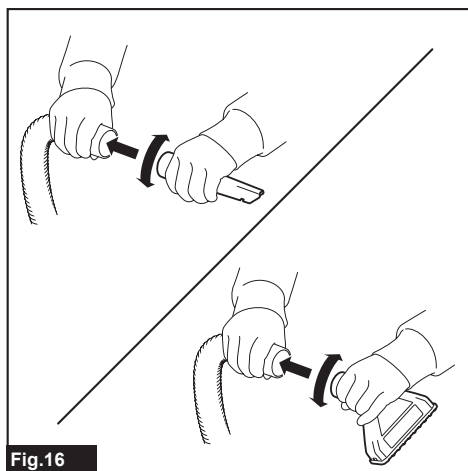


Fig.16

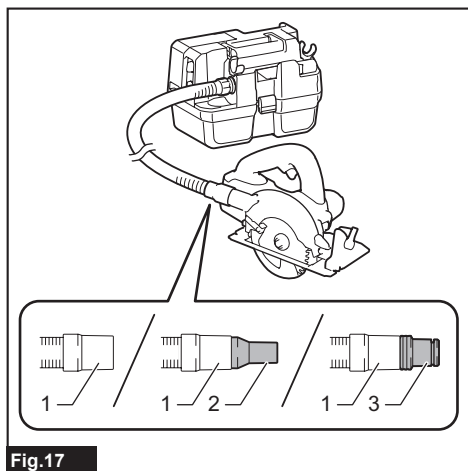


Fig.17

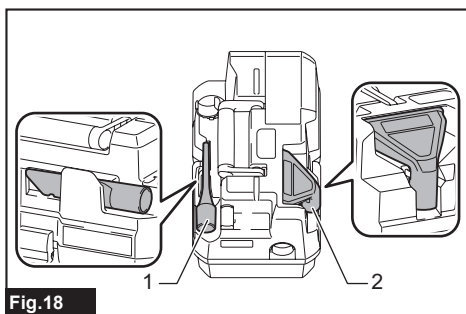


Fig.18

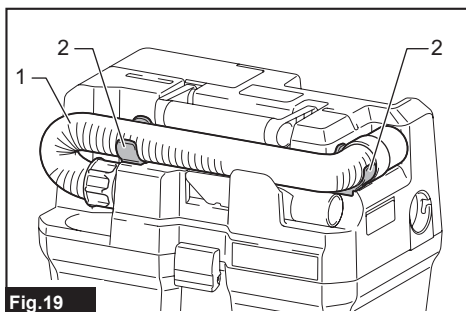


Fig.19

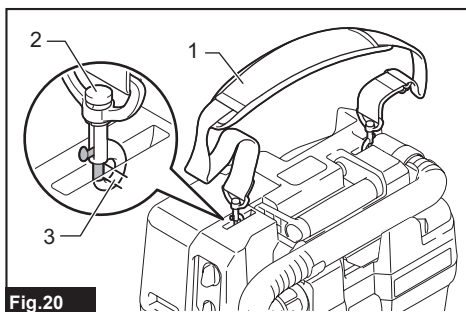


Fig.20

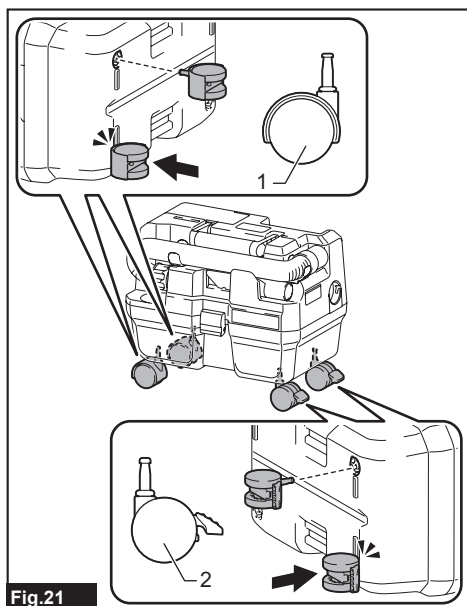


Fig.21

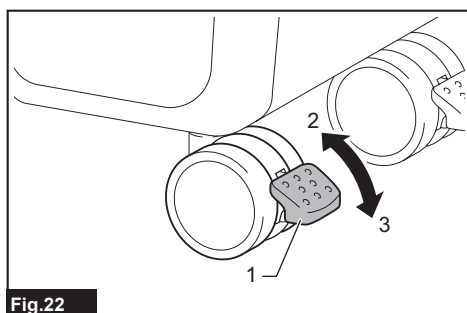


Fig.22

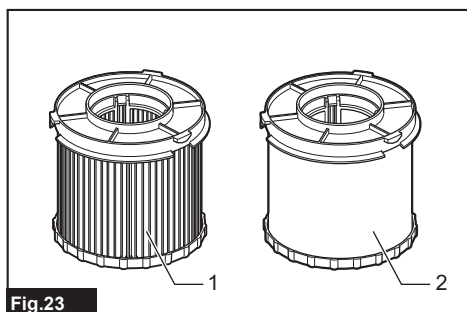


Fig.23

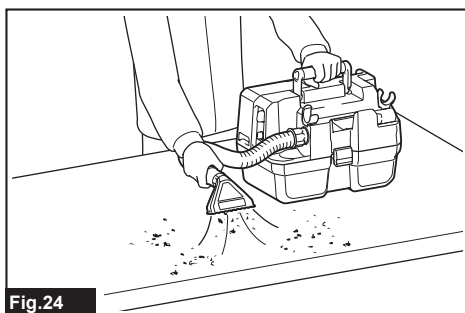


Fig.24

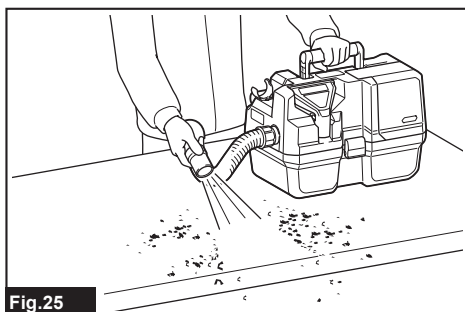


Fig.25

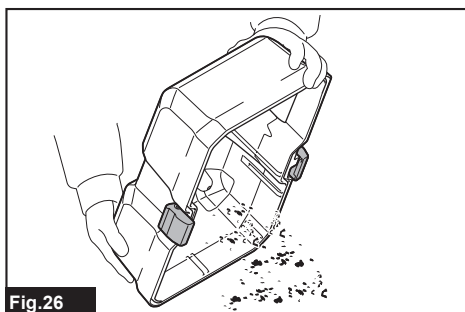


Fig.26

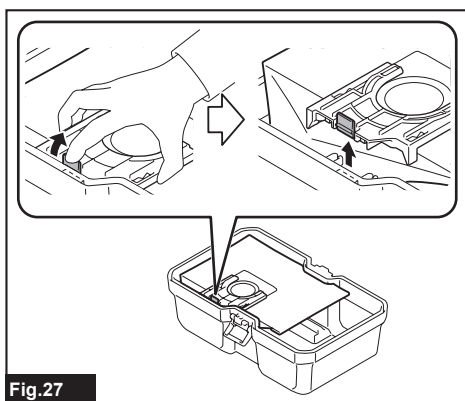
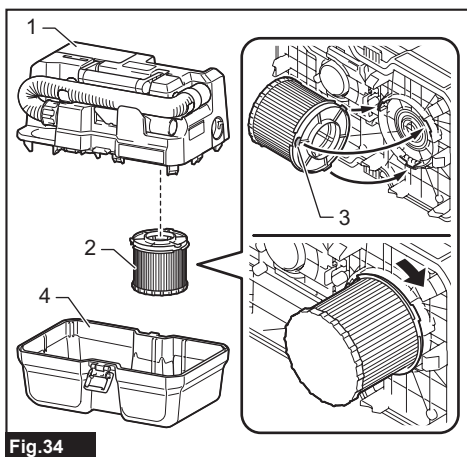
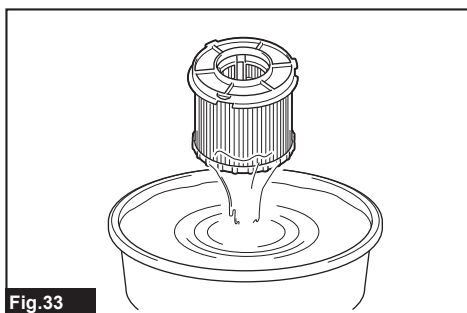
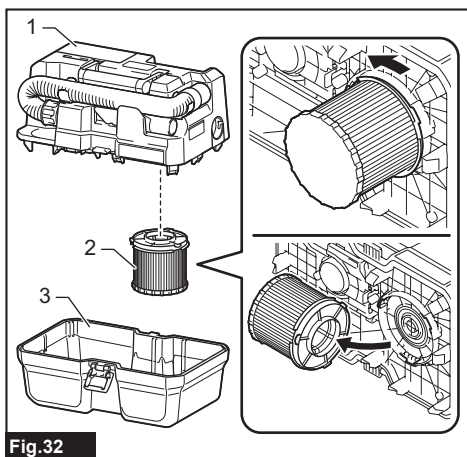
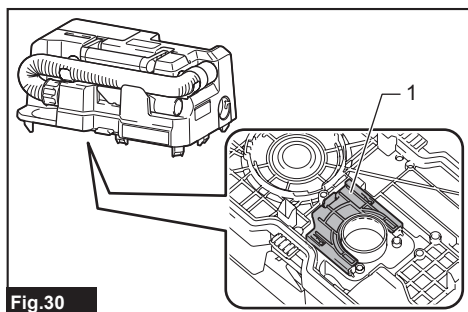
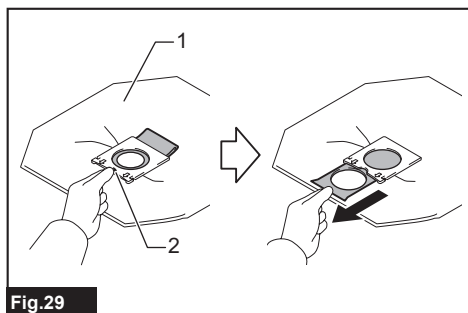
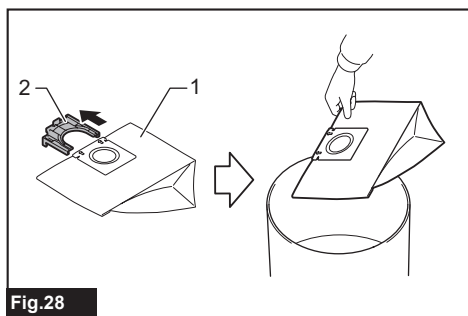
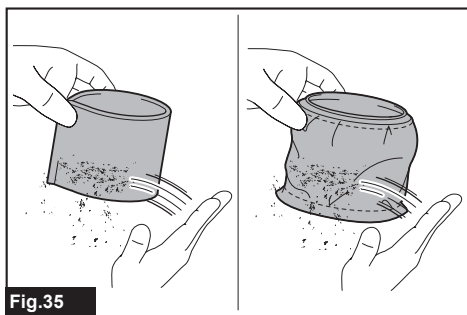


Fig.27





## WARNING

- This machine is not intended for use by persons including children with reduced physical, sensory or mental capabilities, or lack of experience and knowledge.
- Children should be supervised to ensure that they do not play with the cleaner.
- See the chapter "SPECIFICATIONS" for the type reference of the battery.
- See the section "Important safety instructions for battery cartridge" for prohibited matters or important matters of the battery cartridge.
- See the section "Installing or removing battery cartridge" for how to remove or install the battery.
- When disposing the battery cartridge, remove it from the tool and dispose of it in a safe place. Follow your local regulations relating to disposal of battery.
- If the tool is not used for a long period of time, the battery must be removed from the tool.
- Do not short the battery cartridge.
- See the chapter "MAINTENANCE" for the appropriate details of precautions during user maintenance.

## SPECIFICATIONS

<b>Model:</b>		<b>VC014GL</b>
Maximum air volume at the end of hose (with BL4050F)		2.0 m³/min
Maximum air volume at turbine (with BL4050F)		2.9 m³/min
Maximum vacuum (with BL4050F)		15 kPa
Nominal overpressure (when using as a blower)		15 kPa
Recoverable capacity	Dust	7.5 L
	Water *	4.5 L
Dimensions (L x W x H)		400 mm x 251 mm x 282 mm
Rated voltage		D.C. 36 V - 40 V max
Net weight		5.0 - 6.2 kg
Protection degree		IPX4

- Due to our continuing program of research and development, the specifications herein are subject to change without notice.
- Specifications may differ from country to country.
- The weight includes accessories (Hose, Wide nozzle, Sash nozzle) and battery cartridge(s). The lightest and heaviest combination weight of the appliance and battery cartridge(s) are shown in the table.
- \* The capacity of water depends on the condition of use.

## Applicable battery cartridge and charger

Battery cartridge	BL4020 / BL4025 / BL4040 / BL4040F / BL4050F / BL4080F
Charger	DC40RA / DC40RB / DC40RC / DC40WA / BCC01 / BCC02

- Some of the battery cartridges and chargers listed above may not be available depending on your region of residence.

**⚠ WARNING: Only use the battery cartridges and chargers listed above.** Use of any other battery cartridges and chargers may cause injury and/or fire.

## Symbols

The followings show the symbols which may be used for the equipment. Be sure that you understand their meaning before use.



Read instruction manual.



Take particular care and attention.