

Micrometer

Setting Standards for Outside Micrometers SERIES 167

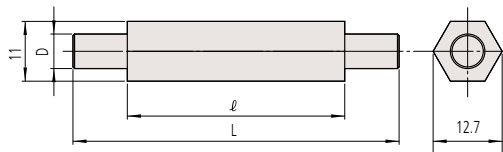
- Used for setting the zero point on outside micrometers.



167-108

SPECIFICATIONS and DIMENSIONS

167-101 to 167-103
167-141 to 167-143

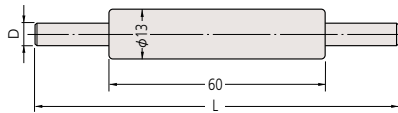


Unit: mm

Metric						
Code No.	Length <L> (mm)	Accuracy (μm)	Parallelism (μm)	Flatness (μm)	l (mm)	Diameter <D> (mm)
167-101	25	±1.5	2.0	0.3	18	6.35
167-102	50	±2.0			40	
167-103	75	±2.5			40	

Inch						
Code No.	Length <L> (in)	Accuracy (in)	Parallelism (in)	Flatness (in)	l (mm)	Diameter <D> (in)
167-141	1	±0.00005	0.00008	0.000012	18	0.25
167-142	2	±0.0001			40	
167-143	3	±0.0001			40	

167-104 to 167-107
167-144 to 167-147

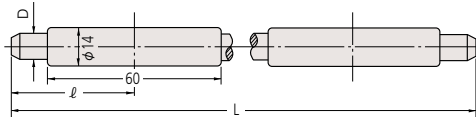


Unit: mm

Metric					
Code No.	Length <L> (mm)	Accuracy (μm)	Parallelism (μm)	Flatness (μm)	Diameter <D> (mm)
167-104	100	±3	2.0	0.3	7.9
167-105	125	±3.5			
167-106	150	±4			
167-107	175	±4.5			

Inch					
Code No.	Length <L> (in)	Accuracy (in)	Parallelism (in)	Flatness (in)	Diameter <D> (in)
167-144	4	±0.0001	0.00008	0.000012	0.31
167-145	5	±0.00015			
167-146	6				
167-147	7				

167-108 to 167-119
167-148 to 167-159



Unit: mm

Metric						
Code No.	Length <L> (mm)	Accuracy (μm)	Parallelism (μm)	Flatness (μm)	l (mm)	Diameter <D> (mm)
167-108	200	±5.0	2.0	0.3	47	9.4
167-109	225	±5.5			52	
167-110	250	±6.0			57	
167-111	275	±6.5			64	
167-112	300	±7			69	
167-113	325	±7.5			74	
167-114	350	±8			80	
167-115	375	±8.5			85	
167-116	400	±9			90	
167-117	425	±9.5			95	
167-118	450	±10			101	
167-119	475	±10.5			101	

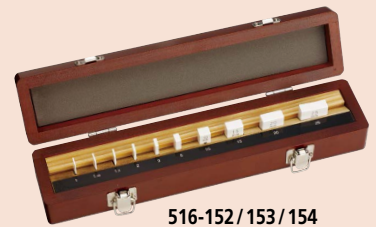
Inch						
Code No.	Length <L> (in)	Accuracy (in)	Parallelism (in)	Flatness (in)	l (mm)	Diameter <D> (in)
167-148	8	±0.00015	0.00008	0.000012	47	0.37
167-149	9	±0.0002			52	
167-150	10	±0.0002			57	
167-151	11	±0.0002			64	
167-152	12	±0.00025			69	
167-153	13	±0.00025			74	
167-154	14	±0.00025			80	
167-155	15	±0.00025			85	
167-156	16	±0.00025			90	
167-157	17	±0.00025			95	
167-158	18	±0.00025			101	
167-159	19	±0.0003			101	

Typical application



Micrometer Inspection Gauge Block Set

Refer to page 01-13 for details.



516-152 / 153 / 154



Micro Checker (holder only)
516-607



Tài liệu được tổng hợp bởi đội ngũ kỹ thuật của **NPOWER**
Bản quyền nội dung thuộc về **Mitutoyo**

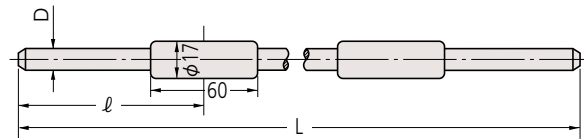
Powered by **NAVITECH** | www.navitech.co

www.npower.com.vn

Setting Standards for Outside Micrometers SERIES 167

167-120 to 167-404
167-160 to 167-180

Unit: mm



Metric						
Code No.	Length $\langle L \rangle$ (mm)	Accuracy (μm)	Parallelism (μm)	Flatness (μm)	ℓ (mm)	Diameter $\langle D \rangle$ (mm)
167-120	500	± 11	2.0	0.3	106	11.9
167-121	525	± 11.5			112	
167-122	550	± 12			117	
167-123	575	± 12.5			122	
167-124	600	± 13			128	
167-125	625	± 13.5			133	
167-126	650	± 14			138	
167-127	675	± 14.5			142	
167-128	700	± 15			147	
167-129	725	± 15.5			153	
167-130	750	± 16			158	
167-131	775	± 16.5			164	
167-132	800	± 17			170	
167-133	825	± 17.5			175	
167-134	850	± 18			180	
167-135	875	± 18.5			185	
167-136	900	± 19			191	
167-137	925	± 19.5			196	
167-138	950	± 20			201	
167-139	975	± 20.5			207	
167-140	1000	± 21			211	
167-365	1025	± 21.5			217	
167-366	1050	± 22			222	
167-367	1075	± 22.5			227	
167-368	1100	± 23			232	
167-369	1125	± 23.5			238	
167-370	1150	± 24			243	
167-371	1175	± 24.5			248	
167-372	1200	± 25			254	
167-373	1225	± 25.5			259	
167-374	1250	± 26			264	
167-375	1275	± 26.5			269	
167-376	1300	± 27			275	
167-377	1325	± 27.5			280	
167-378	1350	± 28			285	
167-379	1375	± 28.5			291	
167-380	1400	± 29			296	
167-381	1425	± 29.5			301	
167-382	1450	± 30			306	
167-383	1475	± 30.5			312	
167-384	1500	± 31	317			
167-385	1525	± 31.5	322			
167-386	1550	± 32	328			
167-387	1575	± 32.5	333			
167-388	1600	± 33	338			
167-389	1625	± 33.5	343			
167-390	1650	± 34	349			
167-391	1675	± 34.5	354			
167-392	1700	± 35	359			
167-393	1725	± 35.5	364			
167-394	1750	± 36	370			
167-395	1775	± 36.5	375			
167-396	1800	± 37	380			
167-397	1825	± 37.5	386			
167-398	1850	± 38	391			
167-399	1875	± 38.5	396			
167-400	1900	± 39	401			
167-401	1925	± 39.5	407			
167-402	1950	± 40	412			
167-403	1975	± 40.5	417			
167-404	2000	± 41	423			

Inch						
Code No.	Length $\langle L \rangle$ (in)	Accuracy (in)	Parallelism (in)	Flatness (in)	ℓ (mm)	Diameter $\langle D \rangle$ (in)
167-160	20	± 0.0003	0.00008	0.000012	106	0.47
167-161	21	± 0.0003			112	
167-162	22	± 0.0003			117	
167-163	23	± 0.0003			122	
167-164	24	± 0.0003			128	
167-165	25	± 0.00035			133	
167-166	26	± 0.00035			138	
167-167	27	± 0.00035			142	
167-168	28	± 0.00035			147	
167-169	29	± 0.00035			153	
167-170	30	± 0.00035			158	
167-171	31	± 0.00035			164	
167-172	32	± 0.00035			170	
167-173	33	± 0.00035			175	
167-174	34	± 0.00035			180	
167-175	35	± 0.00035			185	
167-176	36	± 0.00035			191	
167-177	37	± 0.0004			196	
167-178	38	± 0.0004			201	
167-179	39	± 0.0004			207	
167-180	40	± 0.0004			211	

Note: Available up to 79 in



Tài liệu được tổng hợp bởi đội ngũ kỹ thuật của NPOWER
Bản quyền nội dung thuộc về Mitutoyo

Powered by NAVITECH | www.navitech.co
www.npower.com.vn