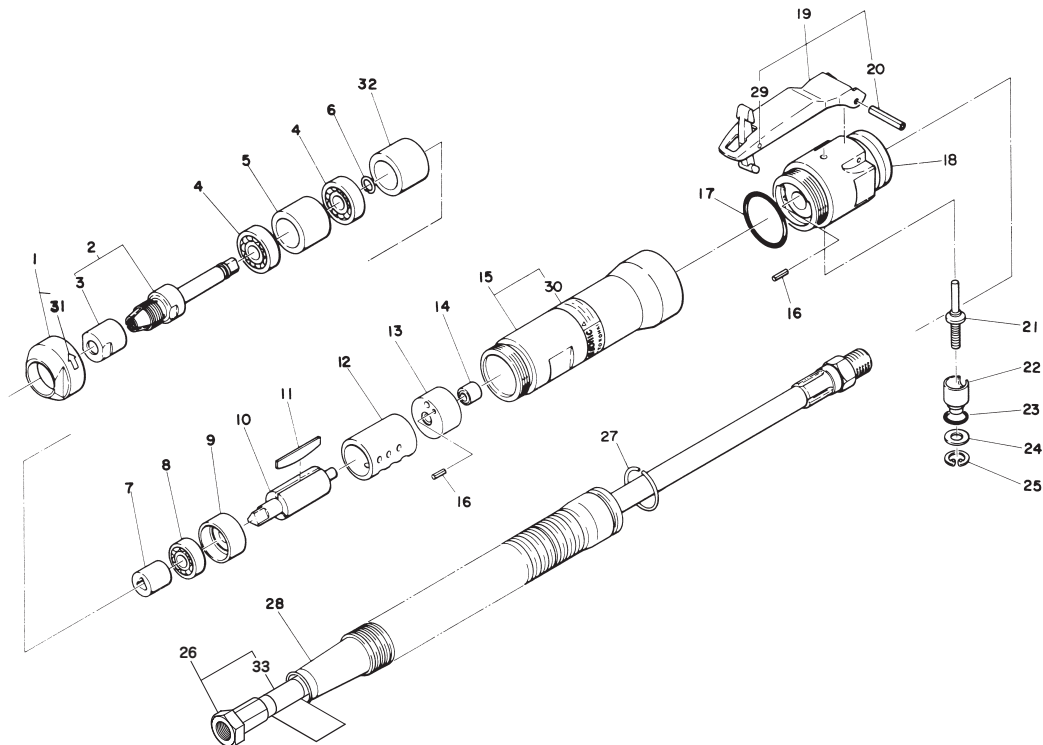


Exploded view/parts list are subject to change at any time without notice. (As of Jan. 2020)

L-35C Exploded View/Parts List

⚠ WARNING

This diagram is for your reference only. Do not attempt to service or repair the Tool.
Do not take the Tool apart. Contact an authorized Nitto dealer for all service and repair of the Tool.
Improper service and repair can cause accidents and severe injuries.
Never attempt to modify the Tool.
Never attempt service or repair the Tool yourself.



The part numbers with () are included in the Ass'y parts above them.

No.	Part No.	Description	Qty
1	TB01632	Cap Ass'y	1set
31	(TP12437)	Label Rotating Direction	1
2	TB02507	Chuck Φ6 Sub Ass'y	1set
3	(TP10742)	Chuck Nut	1
4	FQ00263	Ball Bearing 6900ZZ	2
5	TQ03266	Collar A	1
6	TQ03267	Stop Ring	1
7	TA99920	Joint Ass'y	1set
8	TP06386	Ball Bearing 607ZZ	1
9	TP04936	End Plate B	1
10	TP11751	Rotor	1
11	TA9A286	Blade Ass'y (3 pcs.)	1set
12	TP04938	Cylinder	1
13	TP11752	End Plate A	1
14	TP11753	Needle Bearing	1
15	TB08739	Housing Ass'y	1set
30	(TQ12789)	Label Warning CE Mark	1
16	TP07006	Spring Pin 2×8 AW	2
17	TP07951	O Ring S-28	1
18	TP11755	Valve Body	1
19	TB01152	Throttle Lever Ass'y	1set
29	(TP05498)	Spring Pin 2×16 AW	1
20	(TP00460)	Spring Pin 3×22 AW	1

No.	Part No.	Description	Qty
21	TA93070	Throttle Valve Ass'y	1set
22	TA06325	Adjust Valve	1
23	TP11997	O Ring KS-7	1
24	TP06326	Spacer 6×12×1.2	1
25	TP03695	Retaining Ring C-12	1
26	TB07658	Air Hose C Ass'y	1set
33	(TQ11519)	Label Lubrication	1
27	TP09153	Stop Ring O-28.5×2	1
28	TQ01664	Exhaust Hose	1
32	TP11748	Collar	1

Accessories

No.	Part No.	Description	Qty
	TP00475	Single Ended Spanner14	2
		Mounted Wheel 13×13×6×38	1
	TQ12790	Instruction Manual	1
	TP02236	Bushing R1/4×NPT1/4	1
	TQ12791	Declaration of Conformity	1

Tài liệu được tổng hợp bởi đội ngũ kỹ thuật của **NPOWER** Bản quyền nội dung thuộc về **NITTO KOHKI**

www.npower.com.vn Powered by **NAVITECH** | www.navitech.co