

Exploded View/Parts List

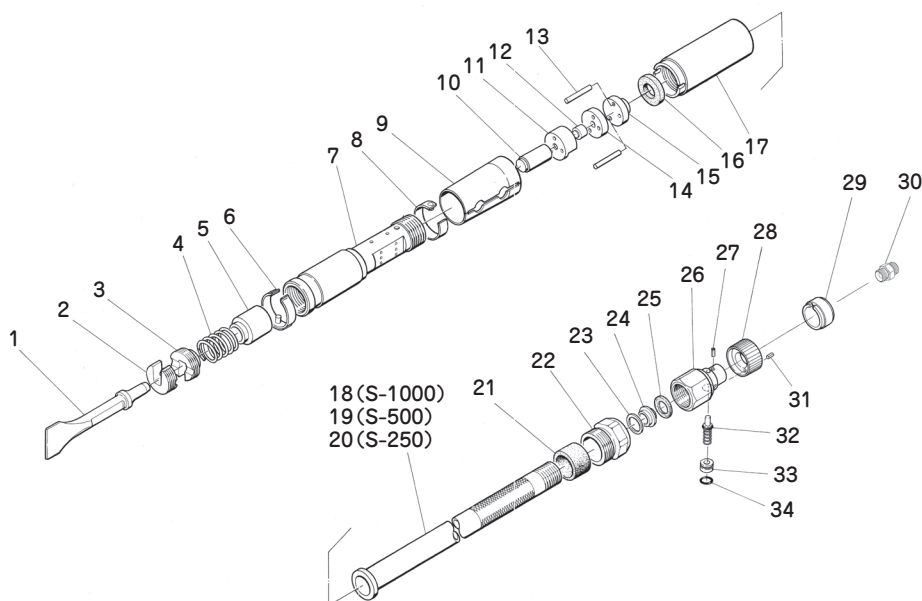
S-250, S-500, S-1000 Exploded View/Parts List

CAUTION Exploded diagram/parts list are subject to change at any time without notice. (As of Jun.2020)

● **Users should never perform disassembly of the tool.**

This illustration is for reference only.

For repair or replacement of the tool, request service from the retailer where you purchased the tool or the nearest NITTO service member store.



No.	Part No.	Part Name	Q'ty
1	TP04552	Bend Scraper 38X180 (2005)	1
2	TP03938	Chisel Stopper B	1
3	TP03619	Chisel Stopper A	1
4	TP03618	Spring	1
5	TP03617	Chisel Guide	1
6	TA91302	Chisel Lock Band Ass'y	1set
7	TP03616	Cylinder	1
8	TA91301	Cylinder Lock Band Ass'y	1set
9	TP03623	Dust Cover	1
10	TP00597	Piston	1
11	TP11403	Upper Valve	1
12	TP11405	Spool	1
13	TP03626	Pin 3X35	2
14	TP11404	Lower Valve	1
15	TP03627	Distance Piece	1
16	TP03628	Cushion A	1
17	TP03704	Sleeve Coupling	1
18	TP03630	Handle Bar (For S-1000)	1
19	TP03631	Handle Bar (For S-500)	1
20	TP03650	Handle Bar (For S-250)	1
21	TP03629	Cushion B	1

No.	Part No.	Part Name	Q'ty
22	TP03632	Nut	1
23	TP04324	Copper Washer 19.5X25X1	1
24	TP04323	Washer	1
25	TP03643	Cushion C	1
26	TP04602	Valve Body	1
27	TP04608	Spring Pin 4X10	3
28	TP04603	Cam Ring	1
29	TP04604	Cam Ring Supporter	1
30	TP00861	Bushing M16XM16	1
31	TP04609	Spring Pin 4X14	1
32	TA91683	Throttle Valve Ass'y	1set
33	TP03638	Spring Cap	1
34	TP12001	O Ring KS-6	1

Accessories

No.	Part No.	Part Name	Q'ty
	TP00862	Hose Lock Nut M16	1
	TP00863	Hose Bushing 3/8	1
	TQ16198	Instruction Manual	1
	TQ16199	Caution for using pneumatic tool	1