

CUTTING/DRILLING

Pneumatic Hacksaw

SUPER SAW

Model **SSW-110** 



Special double-piston system provides low vibration while improving cutting speed!

- Ideal for sawing and trimming operations on sheet metal, aluminum, plastic and other materials
- Suitable for automotive, fabrication, HVAC, electrical and woodworking applications
- Ultra lightweight construction with low vibration performance
- Optimized blade stroke for maximum cutting performance
- Powerful dual piston construction
- Locking throttle lever helps prevent accidental start-up

Specifications

Model	SSW-110
Air Pressure	MPa (kgf/cm ²) 0.6 (6)
Air Consumption (No-load)	m ³ /min 0.29
Strokes per Minute	min ⁻¹ 7000
Stroke Length	mm 11
Capacity (Max. plate thickness)	mm 3
Air Inlet Size	Rc 1/4
Mass (Weight)	kg 0.62
Accessories Included	<ul style="list-style-type: none"> • 2 pieces of 32 TPI Saw Blade • 3 mm Hex Socket Screw Key • Bushing R 1/4 x NPT 1/4

Optional Accessories

Ref. No.	PN	Description	Sales Unit
1	TB11099	9 TPI Saw Blade for Gypsum-board	10 pcs./set
2	TB11100	12 TPI Saw Blade for Plywood Panel	
3	TB11101	14 TPI Saw Blade for Plastic	
4	TB11102	18 TPI Saw Blade for Plastic	
5	TB11103	24 TPI Saw Blade for Mild Steel	
6	TB11104	32 TPI Saw Blade for Mild Steel	



Pneumatic Hand Drill

AIR DRILL

The power and performance you need to drill deeper and faster

- Ultra high power-to-weight ratio
- Ergonomically designed to reduce operator fatigue
- Variable speed control
- Reversible rotation direction
- Designed for industrial and production applications

Model **ADR-65** 

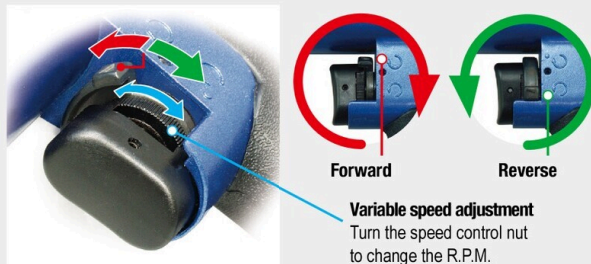


Model **ADR-100** 



Reversible

Change rotation direction by turning the valve as indicated.



Specifications

Model	ADR-65	ADR-100
Air Pressure	MPa (kgf/cm ²) 0.6 (6)	
Air Consumption (No-load)	m ³ /min 0.55	0.67
Free Speed	min ⁻¹ (rpm) 2900	2000
Max. drilling Capacity	mm 6.5	10.0
Air Inlet Size	Rc 1/4	
Mass (Weight)	kg 0.8	1.1
Accessories Included	<ul style="list-style-type: none"> • Drill chuck (Installed) • Chuck Handle • Bushing R 1/4 x NPT 1/4 • CUPLA 30SH 	

Optional Accessory

PN	Description	Sales Unit
TQ10969	Hanger	1 piece

NPOWER
Powered by
NaviTech



Tài liệu được tổng hợp bởi đội ngũ kỹ thuật của **NPOWER** Bản quyền nội dung thuộc về **NITTO KOHKI**

www.npower.com.vn Powered by **NAVITECH** | www.navitech.co