

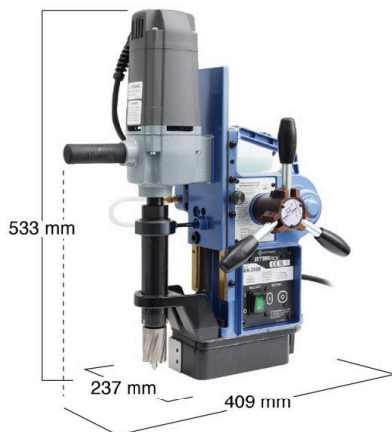
BORING

Portable Magnetic Base Drilling Machine

ATRA ACE auto

Model **WA-3500** 

• Max. 35 mm dia. x 50 mm deep



High-performance feed system & high-tech components

• Drilling time and cutting performance are enhanced by the automatic feed function.

Model **WA-5000** 

• Max. 50 mm dia. x 75 mm deep



 YouTube



Specifications

Model		WA-3500		WA-5000	
Power Source (Single Phase)		110 - 120 V AC, 50/60 HZ	220 - 240 V AC, 50/60 HZ	110 - 120 V AC, 50/60 HZ	220 - 240 V AC, 50/60 HZ
Electric	Rated Power Consumption	1100		1150	
	Rated Current	10.2		10.8	
	No-load Speed	950		350 / 650	
Magnet Power Consumption		34		75	
Hole Capacity	Cutter	Hole Diameter		Hole Diameter	
	One-touch Type JETBROACH 25L	-		12 to 17	
	One-touch Type JETBROACH 35L	17.5 to 35		17.5 to 40	
	One-touch Type JETBROACH 50L	17.5 to 35		12 to 50	
	One-touch Type JETBROACH 75L	-		17.5 to 50	
	One-touch Type HI-BROACH 25L	14 to 35		14 to 50	
	One-touch Type HI-BROACH 50L	-		14 to 50	
Min. Plate Thickness for Magnet Adhesion		9		9	
Max. Stroke		83		107	
Magnet Holding Power		7056 (720)		9800 (1000)	
Magnet Dimensions		92 (W) x 213 (L)		101 (W) x 201 (L)	
Power Cord Length		3		3	
Mass (Weight)		20		23	
Accessories Included		<ul style="list-style-type: none"> • Carry Case • Cutting Oil 0.5L • Pilot Pin 08035 • Side Handle 		<ul style="list-style-type: none"> • 3 mm Hex Socket Screw Key • 8 x 10 mm Spanner • Guard • Chain 	

Optional Accessories

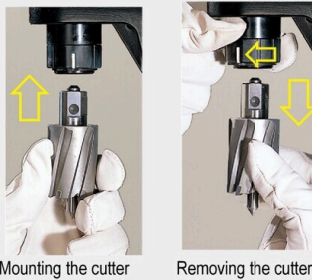
Ref. No.	PN	Description	Sales Unit	Applicable Model	
				WA-3500	WA-5000
1	TB05186	Chip Breaker Ass'y	1 set	●	●
2	TB01507	Cutting Oil 2L	1 piece	●	●
3	TB04374	Supporting Magnet Ass'y	1 set	●	●
4	TB02536	Sleeve 6.5 for Triangle Shank Drill Bit	1 piece	●	●
5	TB07696	Pipe Attachment Ass'y	1 set	●	●
		One-touch Type JETBROACH 25L	1 piece	●	●
		One-touch Type JETBROACH 35L	1 piece	●	●
		One-touch Type JETBROACH 50L	1 piece	●	●
		One-touch Type JETBROACH 75L	1 piece	●	●
		One-touch Type HI-BROACH 25L	1 piece	●	●
		One-touch Type HI-BROACH 50L	1 piece	●	●



BORING

One-touch Cutter Replacement

Replacement is quick and easy with our unique push fit self-centering cutter system.



Mounting the cutter

Removing the cutter

Coolant into the Heart of the Cut

Coolant is fed directly to the inside of the cut. The coolant system also features an auto shut-off.



Improved Bearing Bracket

Our precision bearing bracket aligns cutters precisely, which increases cutter life.



Fail-Safe Protection

Built-in Motion Sensor

If any lateral movement or excess vibration is detected, both the drill and the feed motor stop. Nitto Kohki is the first company to incorporate this feature into magnetic base drills.

Fail-safe Restart

The drill will not re-start even if power is re-supplied after accidental shutdown. Drilling can only be continued after turning on the drill switch.

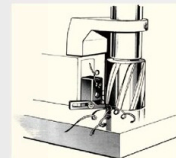
Magnet Open-circuit Sensor

The drill will not start until the magnetic field is active.

Chip Breaker

This chip breaker prevents the cutter from becoming jammed with metal shavings.

- Standard accessory for the WA-5000
- Optional accessory for the WA-3500



Two Speed Selection (WA-5000)

Speed can be changed to suit the type and size of the cutter.



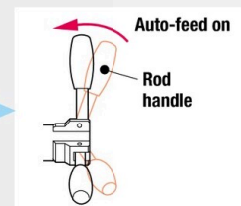
New drill control prevents cutters from breaking

Slow Start Mechanism

The feed speed is reduced for the first few seconds after boring begins to ensure a smooth cut through the mill scale.

Auto-feed

Automatic control & feed are activated by simply pushing the Rod handle to engage the clutch.



Load Sensor

The dual sensing system responds to both drilling and feeding forces on the cutter for the optimum cutting condition.

Variable Automatic Feed

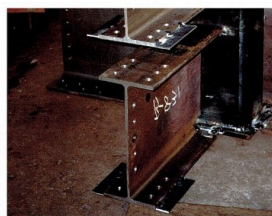
The feed speed is continuously monitored and updated proportionally to the load on the cutter.

Cycle Stop

After the cut has finished, a detector responds to the reduction in load and both the drill and the feed motor automatically stop.

Overload Stop

When an excessive load is applied to the cutter, both the drill and the feed motor will stop automatically.



JETBROACH CUTTERS & HI-BROACH CUTTERS

BROACH CUTTERS are far better than twist drills

- No dead point
- Peripheral cutting
- Dramatically reduce cutting resistance
- Available diameter size: 12 - 100 mm

Test Drilling is very often the only way to determine the machinability of difficult materials.
Use a small size cutter wherever possible in order to minimize trial costs.



Specifications

		HI-BROACH One-touch Type/25L	HI-BROACH One-touch Type/50L	JETBROACH One-touch Type/25,35,50L	JETBROACH One-touch Type/50L(W)	JETBROACH One-touch Type/75L	JETBROACH Side lock Type/75L
Hole Capacity mm	Hole Diameter	25L: 12 - 52 dia.	-	25L: 12 - 17 dia	-	-	-
		-	-	35L: 17.5 - 40 dia.	-	-	-
		-	50L: 12 - 52 dia.	50L: 12 - 65 dia.	50L(W): 18, 22, 24 - 26.5, 28, 32, and 35 dia.	-	-
		-	-	-	75L: 17.5 - 55 dia.	75L: 50 - 100 dia.	
	Plate Thickness	25L: 25	-	25L: 25	-	-	-
		-	-	35L: 35	-	-	-
		-	50L: 50	50L: 50	50L(W): 50	-	-
		-	-	-	-	75L: 75	75L: 75
Feed Speed mm/rev		0.02 - 0.1					
Circumferential Speed m/min		15 - 35 (mild steel)		35 - 50 (mild steel)			

HI-BROACH One-touch Type		ARA-100A	WA-3500	WA-5000	AO-5575A	QA-4000	QA-6500	Pilot Pin
Depth	mm dia. PN							
25 mm	12 TK00698							06025
	13 TK00699							
	14 TK00700							
	15 TK00701							
	16 TK00702							
	17 TK00703							
	17.5 TK01391							
	18 TK01392							
	19 TK01393							
	19.5 TK01394							
	20 TK01395							
	21 TK01396							
	21.5 TK01397							
	22 TK01398							
	22.5 TK01399							
	23 TK01400							
	23.5 TK01401							08025
	24 TK01402							
	24.5 TK01403							
	25 TK01404							
	26 TK01405							
	27 TK01407							
	28 TK01408							
	29 TK01409							
	30 TK01410							
	31 TK01411							
	32 TK01412							
	33 TK01413							
	34 TK01414							
	35 TK01415							
	36 TK01416							
	37 TK01417							
	38 TK01418							
	39 TK01419							
	40 TK01420							
	41 TK01421							
	42 TK01422							
	43 TK01423							
	44 TK01424							
	45 TK01425							
	46 TK01426							
	47 TK01427							
	48 TK01428							
	49 TK01429							
	50 TK01430							
	51 TK01431							
	52 TK01432							

HI-BROACH One-touch Type		ARA-100A	WA-5000	AO-5575A	Pilot Pin
Depth	mm dia. PN				
50 mm	12 TK00721				06050
	13 TK00722				
	14 TK00723				
	15 TK00724				
	16 TK00725				
	17 TK00726				
	18 TK00727				
	19 TK00728				
	20 TK00729				
	21 TK00730				
	22 TK00731				
	23 TK00732				
	24 TK00733				
	25 TK00734				
	26 TK00735				
	27 TK00736				
	28 TK00737				08050
	29 TK00738				
	30 TK00739				
	31 TK00740				
	32 TK00741				
	33 TK00742				
	34 TK00743				
	35 TK00744				
	36 TK00745				
	37 TK00746				
	38 TK00747				
	39 TK00748				
	40 TK00749				
	41 TK00750				
	42 TK00751				
	43 TK00752				
	44 TK00753				
	45 TK00754				
	46 TK00755				
	47 TK00756				
	48 TK00757				
	49 TK00758				
	50 TK00759				
	51 TK00760				
	52 TK00761				

JETBROACH One-touch Type		ARA-100A	LO-3550	WA-3500	WA-5000	WOJ-3200	AO-5575A	QA-4000	QA-6500	Pilot Pin
Depth	mm dia. PN									
25 mm	12 TK01148									06025
	13 TK01149									
	14 TK01150									
	15 TK01151									
	16 TK01152									
	17 TK01153									
	17.5 TK01249									
	18 TK01250									
	18.5 TK01251									
	19 TK01252									
	19.5 TK01253									
	20 TK01254									
	20.5 TK01255									
	21 TK01256									
	21.5 TK01257									
	22 TK01258									
35 mm	22.5 TK01259									08035
	23 TK01260									
	23.5 TK01261									
	24 TK01262									
	24.5 TK01263									
	25 TK01264									
	25.5 TK01265									
	26 TK01266									
	26.5 TK01267									
	27 TK01268									
	28 TK01269									
	29 TK01270									
	30 TK01271									
	31 TK01272									
	32 TK01273									
	33 TK01274									
	34 TK01275									
	35 TK01276									
	36 TK01277									
	37 TK01278									
	38 TK01279									
	39 TK01280									
	40 TK01281									

Sales Unit: 1 Piece

BORING

JETBROACH One-touch Type			ARA-100A	LO-3550	WA-3500	WA-5000	WOJ-3200	AO-5575A	QA-6500	Pilot Pin
Depth	mm	dia.	PN							
12	TK01154			•						
13	TK01155			•						
14	TK01156			•						
15	TK01157			•						
16	TK01158			•						
17	TK01159			•						
17.5	TK01282			•						
18	TK01283			•						
19	TK01284			•						
19.5	TK01285			•						
20	TK01286			•						
20.5	TK01287			•						
21	TK01288			•						
21.5	TK01289			•						
22	TK01290			•						
22.5	TK01291			•						
23	TK01292			•						
23.5	TK01293			•						
24	TK01294			•						
24.5	TK01295			•						
25	TK01296			•						
25.5	TK01297			•						
26	TK01298			•						
26.5	TK01299			•						
27	TK01300			•						
28	TK01301			•						
29	TK01302			•						
30	TK01303			•						
31	TK01304			•						
32	TK01305			•						
33	TK01306			•						
34	TK01307			•						
35	TK01308			•						
36	TK01309			•						
37	TK01310			•						
38	TK01311			•						
39	TK01312			•						
40	TK01313			•						
41	TK01314			•						
42	TK01315			•						
43	TK01316			•						
44	TK01317			•						
45	TK01318			•						
46	TK01319			•						
47	TK01320			•						
48	TK01321			•						
49	TK01322			•						
50	TK01323			•						
51	TK01324			•						
52	TK01325			•						
53	TK01326			•						
54	TK01327			•						
55	TK01328			•						
56	TK01329			•						
57	TK01330			•						
58	TK01331			•						
59	TK01332			•						
60	TK01333			•						
61	TK01334			•						
62	TK01335			•						
63	TK01336			•						
64	TK01337			•						
65	TK01338			•						

JETBROACH One-touch Type 50L(W) for stacked plates			ARA-100A	LO-3550	WOJ-3200	AO-5575A	Pilot Pin
Depth	mm	dia.	PN				
18	TK01068		•	•	•	•	
22	TK00622		•	•	•	•	
24	TK00623		•	•	•	•	
24.5	TK00631		•	•	•	•	
25	TK00624		•	•	•	•	
26	TK00625		•	•	•	•	
26.5	TK00632		•	•	•	•	
28	TK00626		•	•	•	•	
32	TK00627		•	•	•	•	
35	TK00628		•	•	•	•	

JETBROACH One-touch Type			ARA-100A	WA-5000	AO-5575A	Pilot Pin
Depth	mm	dia.	PN			
17.5	TK01350		•	•	•	
18	TK01351		•	•	•	
19	TK01352		•	•	•	
20	TK01353		•	•	•	
21	TK01354		•	•	•	
22	TK01355		•	•	•	
23	TK01356		•	•	•	
24	TK01357		•	•	•	
24.5	TK01358		•	•	•	
25	TK01359		•	•	•	
26	TK01360		•	•	•	
26.5	TK01361		•	•	•	
27	TK01362		•	•	•	
28	TK01363		•	•	•	
29	TK01364		•	•	•	
30	TK01365		•	•	•	
31	TK01366		•	•	•	
32	TK01367		•	•	•	
33	TK01368		•	•	•	
34	TK01369		•	•	•	
35	TK01370		•	•	•	
36	TK01371		•	•	•	
37	TK01372		•	•	•	
38	TK01373		•	•	•	
39	TK01374		•	•	•	
40	TK01375		•	•	•	
41	TK01376		•	•	•	
42	TK01377		•	•	•	
43	TK01378		•	•	•	
44	TK01379		•	•	•	
45	TK01380		•	•	•	
46	TK01381		•	•	•	
47	TK01382		•	•	•	
48	TK01383		•	•	•	
49	TK01384		•	•	•	
50	TK01385		•	•	•	
51	TK01386		•	•	•	
52	TK01387		•	•	•	
53	TK01388		•	•	•	
54	TK01389		•	•	•	
55	TK01390		•	•	•	

JETBROACH Side-lock Type			ARA-100A	Pilot Pin
Depth	mm	dia.	PN	
50	TK01433		•	
51	TK01434		•	
52	TK01435		•	
53	TK01436		•	
54	TK01437		•	
55	TK01438		•	
56	TK01439		•	
57	TK01440		•	
58	TK01441		•	
59	TK01442		•	
60	TK01443		•	
61	TK01444		•	
62	TK01445		•	
63	TK01446		•	
64	TK01447		•	
65	TK01448		•	
66	TK01449		•	
67	TK01450		•	
68	TK01451		•	
69	TK01452		•	
70	TK01453		•	
71	TK01454		•	
72	TK01455		•	
73	TK01456		•	
74	TK01457		•	
75	TK01458		•	
76	TK01459		•	
77	TK01460		•	
78	TK01461		•	
79	TK01462		•	
80	TK01463		•	
81	TK01464		•	
82	TK01465		•	
83	TK01466		•	
84	TK01467		•	
85	TK01468		•	
86	TK01469		•	
87	TK01470		•	
88	TK01471		•	
89	TK01472		•	
90	TK01473		•	
91	TK01474		•	
92	TK01475		•	
93	TK01476		•	
94	TK01477		•	
95	TK01478		•	
96	TK01479		•	
97	TK01480		•	
98	TK01481		•	
99	TK01482		•	
100	TK01483		•	

Pilot Pin		PN : TK01167
06025		
08025		
06050		
08050		
08035		
08075		
12075		

Sales Unit: 1 Piece



BROACH HOLDERS

Industrial cutters for faster and better finished holes

- The Spring-loaded pilot pin picks up the hole location quickly, and ejects the slug automatically at the end of cut
- Available with No. 2 to 4 Morse taper shanks
- Oil Cup Complete Ass'y (PN TB00350) is available as an optional attachment which provides continuous and adjustable cutting oil flow to the cutting area



Specifications		M.T.No.3							M.T.No.4
Morse Taper No.	M.T.No.2	M.T.No.3							M.T.No.4
Model	BHM-02035	BHM-03050							BHM-13075 BHM-14075
PN	TB00390	TB00392							TB00352 TB00354
Cutter	HBO-25L JBO-35L	HBO-25L	HBO-50L	JBO-35L	JBO-50L	JBO-50L(W)	JBS-75L		
Cutter Diameter	12 - 17 dia. 17.5 - 35 dia. 17.5 - 40 dia.	12 - 17 dia. 17.5 - 52 dia.	12 - 18 dia. 19 - 52 dia.	17.5 - 40 dia. 18 - 35 dia.	17.5 - 65 dia. 18 - 35 dia.	50 - 100 dia.			
Pilot Pin	06025 08025 08035	06025 08025	06050 08050	08035	08050	12075			
	Optional Included	Optional	Included	Optional	Optional	Included			

HBO: HI-BROACH One-touch Type

JBO: JETBROACH One-touch Type

JBS: JETBROACH Side-lock Type