

ATRAACE WOJ-3200

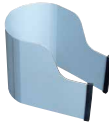
Manual feed

Specification

Model		WOJ-3200	
Power Source (Single Phase)		220~240 V AC 50/60Hz	
Electric Drill	Rated Power Consumption	W	950
	Rated Current	A	4.3
	No Load Speed	min ⁻¹ (rpm)	870
Magnet Power Consumption		W	70
Hole-cutting Capacity		Cutter	Hole Diameter Plate Thickness
One-touch type JETBROACH			17.5 to 32 mm 9 to 50 mm
Magnet Holding Power		N (kgf)	9000 (918)
Magnet Dimensions		mm	99 x 177
Mass (Weight)		kg	13

Standard Accessories

• Guard Ass'y: 1 set



- Pilot Pin 08050 : 1 pc.
- Hex Socket Screw Key 3mm : 1 pc.
- Hex Socket Screw Key 6mm : 1 pc.
- Spanner 8 x 10 : 1 pc.
- Safety Strap : 1 pc.



Cat.No. Tk109

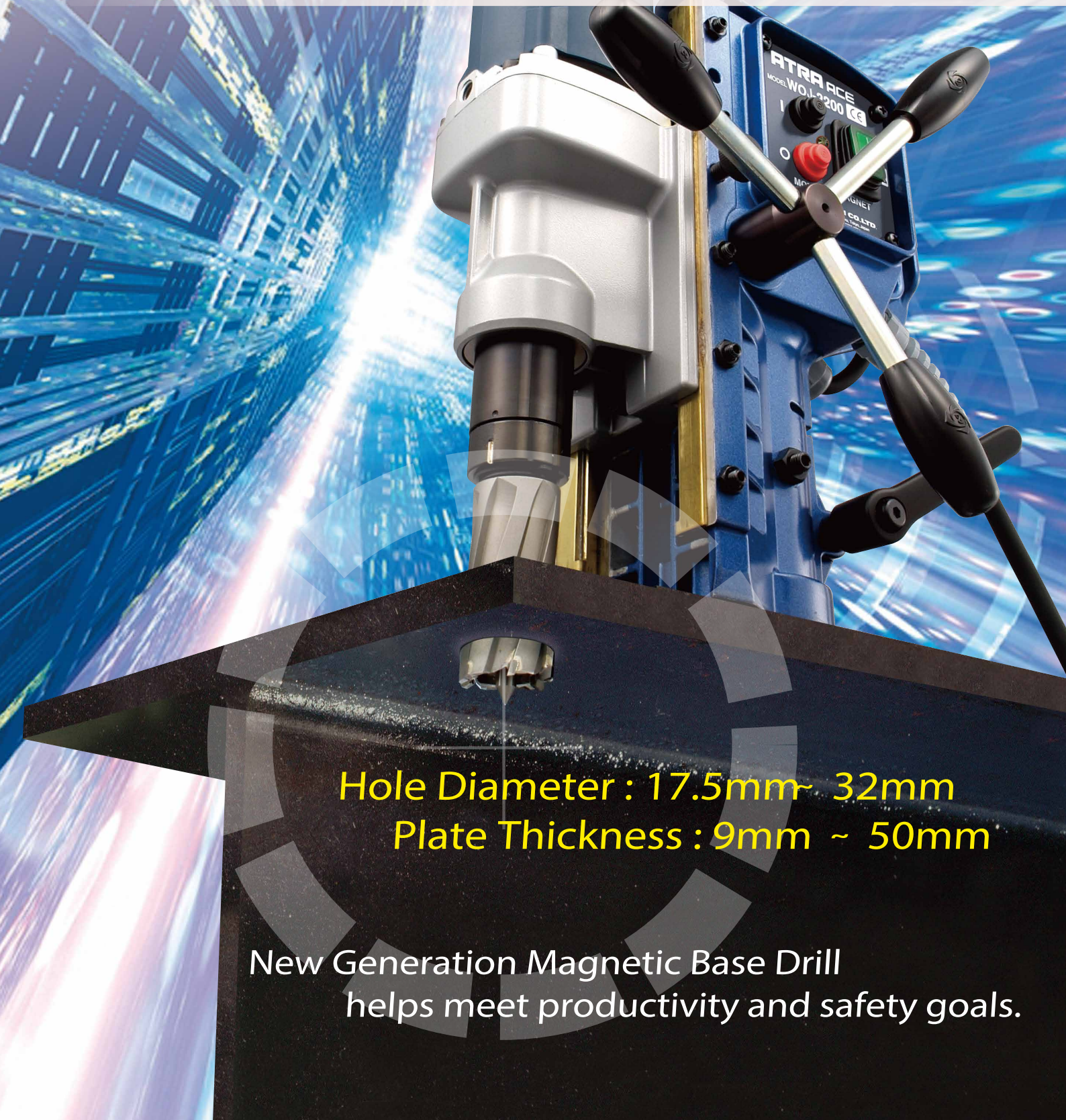
NEW

Portable Magnetic Base Drilling Machine

ATRAACE
Manual feed

Model **WOJ-3200**

Designed to use Jetbroach CarbideTipped Annular Cutters



Hole Diameter : 17.5mm~ 32mm
Plate Thickness : 9mm ~ 50mm

New Generation Magnetic Base Drill
helps meet productivity and safety goals.

Pilot Pin

08035

P/N:TJ15859

For One-touch type JETBROACH

Dia.17.5 ~ 32 Depth 35mm

0850

P/N:TK00802

For One-touch type JETBROACH

Dia.17.5 ~ 32 Depth 50mm



Tài liệu được tổng hợp bởi đội ngũ kỹ thuật của **NPOWER** Bản quyền nội dung thuộc về **NITTO KOHKI**
www.npower.com.vn Powered by **NAVITECH** | www.navitech.co

NITTO **Head Office**
 9-4, Nakaikegami 2-chome,
 Ohta-ku, Tokyo 146-8555 Japan
 Phone : +81-3-3755-1111 Fax : +81-3-3753-8791
 ▶ E-mail : overseas@nitto-kohki.co.jp
 ▶ URL : www.nitto-kohki.co.jp

Distributed by

▶ Specifications and designs are subject to change at any time without notice.



ATRAACE WOJ-3200

Manual feed Model

Designed to use Jetbroach Carbide Tipped Annular Cutters

Fresh compact design with advanced safety system answers the customer's needs.

THE WORLD'S FIRST MANUAL FEED WITH "SMART-STOP / RAPID-RESTART" TECHNOLOGY

This new feature is a breakthrough in the Manual drill industry. Formerly only found on high end Nitto Kohki Automatic drills, this technology displays the current drill status via the LED Load Indicator. Customers will experience a cutting edge drill management system designed solely around saving time and money in replacement parts and cutters in addition to reducing user fatigue and downtime.

FAIL-SAFE RESTART

In the event of a power loss while drilling, the drill will not restart even after power is resupplied. The motor "Start" switch is required to be depressed to resume drilling.

MAGNET OPEN-CIRCUIT SENSOR

The drill will not start if the magnet fails to energize due to an open field or faulty wire.

REVERSIBLE FEED HANDLES

Feed handles can be positioned on the right or left hand side for ease of drilling and mounting in confined spaces.

BODY HEIGHT ADJUSTMENT

Loosening the pillar clamp allows the complete frame to be lifted up to a maximum of 60mm for specific drilling. The use of Jetbroach cutters require the frame to be at the lowest position, while twist bit drilling required the appropriate amount of elevation to be adjusted for safe operation. The pillar clamp is required to be tightened before safe drilling may take place.
Note: Always engage the magnet before adjusting the body height.

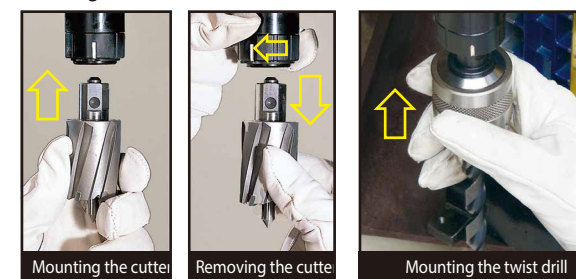


Optional CHIP BREAKER

Optional chip breaker helps prevent the cutter from plugging the hole with chip debris, causing some false overloads and cutter life loss.

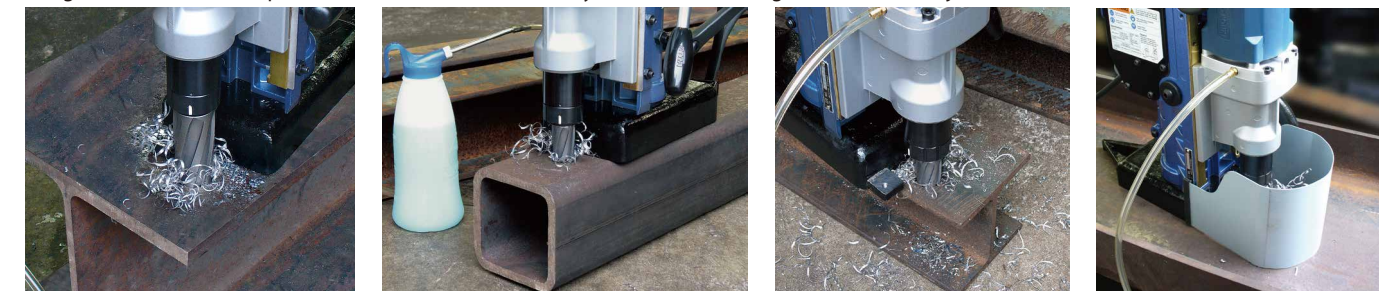
ONE-TOUCH CUTTER REPLACEMENT

Our original self-centering tool-less chuck is quick and easy to change cutters with little downtime.



COMMON PLACE APPLICATIONS

On-site hole cutting in steel plates, H-Beams, shaped bars, framework, shipbuilding, bridge construction and repair, steel reinforcements, and many other metal working and construction jobs.



Portable Magnetic Base Drilling Machine

Optional JETBROACH CARBIDE TIPPED ANNULAR CUTTERS

Original Jetbroach cutters drastically shorten drilling time when compared to similar sized conventional twist drills.



Optional ONE-TOUCH ADAPTER

Optional One-Touch adapter allows the use of up to 13mm twist drills to be used in the original arbor.



Optional JET OILING SYSTEM

Optional Jet Oiling System for use with all drilling applications and types of cutters to extend cutter life and increase hole output.



Load detector with "Smart-Stop/Rapid Restart" technology

As the drilling load increases, the load indicator will change in color from green to orange to red. In addition, if excessive feeding force is applied, the load indicator will rapidly blink red and the rotation of the drill motor will slow down and temporarily stop. If the load is released while the load indicator is blinking red, the drill motor will resume its rotation.

LED load indicator

Green Orange Red

Proper load Overload

"Smart Stop" stalls motor when overloaded.

"Rapid-Start" resumes drilling operation

Green / Orange Resume proper load

Continued overload

Drill motor will not turn on

Drill motor shuts off

Slow Blinking Green

Slow Blinking Red

Safety mode

Magnet malfunction

Slow Blinking Red



JETBROACH CUTTERS & HI-BROACH CUTTERS

BROACH CUTTERS are far better than twist drills

- No dead point
- Peripheral cutting
- Dramatically reduce cutting resistance
- Available diameter size: 12 - 100 mm

Test Drilling is very often the only way to determine the machinability of difficult materials.
Use a small size cutter wherever possible in order to minimize trial costs.



Specifications

		HI-BROACH One-touch Type/25L	HI-BROACH One-touch Type/50L	JETBROACH One-touch Type/25,35,50L	JETBROACH One-touch Type/50L(W)	JETBROACH One-touch Type/75L	JETBROACH Side lock Type/75L
Hole Capacity mm	Hole Diameter	25L: 12 - 52 dia.	-	25L: 12 - 17 dia	-	-	-
		-	-	35L: 17.5 - 40 dia.	-	-	-
		-	50L: 12 - 52 dia.	50L: 12 - 65 dia.	50L(W): 18, 22, 24 - 26.5,	-	-
		-	-	-	28, 32, and 35 dia.	75L: 17.5 - 55 dia.	75L: 50 - 100 dia.
	Plate Thickness	25L: 25	-	25L: 25	-	-	-
		-	-	35L: 35	-	-	-
		-	50L: 50	50L: 50	50L(W): 50	-	-
		-	-	-	-	75L: 75	75L: 75
Feed Speed		mm/rev		0.02 - 0.1			
Circumferential Speed		m/min		15 - 35 (mild steel)			
				35 - 50 (mild steel)			

HI-BROACH One-touch Type		ARA-100A	WA-3500	WA-5000	AO-5575A	QA-4000	QA-6500	Pilot Pin
Depth	mm dia.	PN						
25 mm	12	TK00698						06025
	13	TK00699						
	14	TK00700						
	15	TK00701						
	16	TK00702						
	17	TK00703						
	17.5	TK01391						
	18	TK01392						
	19	TK01393						
	19.5	TK01394						
	20	TK01395						
	21	TK01396						
	21.5	TK01397						
	22	TK01398						
	22.5	TK01399						
	23	TK01400						
	23.5	TK01401						
	24	TK01402						
	24.5	TK01403						
	25	TK01404						
	26	TK01405						08025
	27	TK01407						
	28	TK01408						
	29	TK01409						
	30	TK01410						
	31	TK01411						
	32	TK01412						
	33	TK01413						
	34	TK01414						
	35	TK01415						
	36	TK01416						
	37	TK01417						
	38	TK01418						
	39	TK01419						
	40	TK01420						
	41	TK01421						
	42	TK01422						
	43	TK01423						
	44	TK01424						
	45	TK01425						
	46	TK01426						
	47	TK01427						
	48	TK01428						
	49	TK01429						
	50	TK01430						
	51	TK01431						
	52	TK01432						

HI-BROACH One-touch Type		ARA-100A	WA-5000	AO-5575A	Pilot Pin
Depth	mm dia.	PN			
50 mm	12	TK00721			06050
	13	TK00722			
	14	TK00723			
	15	TK00724			
	16	TK00725			
	17	TK00726			
	18	TK00727			
	19	TK00728			
	20	TK00729			
	21	TK00730			
	22	TK00731			
	23	TK00732			
	24	TK00733			
	25	TK00734			
	26	TK00735			
	27	TK00736			
	28	TK00737			
	29	TK00738			
	30	TK00739			
	31	TK00740			08050
	32	TK00741			
	33	TK00742			
	34	TK00743			
	35	TK00744			
	36	TK00745			
	37	TK00746			
	38	TK00747			
	39	TK00748			
	40	TK00749			
	41	TK00750			
	42	TK00751			
	43	TK00752			
	44	TK00753			
	45	TK00754			
	46	TK00755			
	47	TK00756			
	48	TK00757			
	49	TK00758			
	50	TK00759			
	51	TK00760			
	52	TK00761			

JETBROACH One-touch Type		ARA-100A	LO-3550	WA-3500	WA-5000	WOJ-3200	AO-5575A	QA-4000	QA-6500	Pilot Pin
Depth	mm dia.	PN								
25 mm	12	TK01148								06025
	13	TK01149								
	14	TK01150								
	15	TK01151								
	16	TK01152								
	17	TK01153								
	17.5	TK01249								
	18	TK01250								
35 mm	18.5	TK01251								08035
	19	TK01252								
	19.5	TK01253								
	20	TK01254								
	20.5	TK01255								
	21	TK01256								
	21.5	TK01257								
	22	TK01258								
	22.5	TK01259								
	23	TK01260								
	23.5	TK01261								
	24	TK01262								
	24.5	TK01263								
	25	TK01264								
	25.5	TK01265								
	26	TK01266								
	26.5	TK01267								
	27	TK01268								
	28	TK01269								
	29	TK01270								
	30	TK01271								
	31	TK01272								
	32	TK01273								
	33	TK01274								
	34	TK01275								
	35	TK01276								
	36	TK01277								
	37	TK01278								
	38	TK01279								
	39	TK01280								
	40	TK01281								

Sales Unit: 1 Piece

BORING

JETBROACH One-touch Type			ARA-100A	LO-3550	WA-3500	WA-5000	WOJ-3200	AO-5575A	QA-6500	Pilot Pin
Depth	mm	dia.	PN							
12	TK01154			•						
13	TK01155			•						
14	TK01156			•						
15	TK01157			•						
16	TK01158			•						
17	TK01159			•						
17.5	TK01282			•						
18	TK01283			•						
19	TK01284			•						
19.5	TK01285			•						
20	TK01286			•						
20.5	TK01287			•						
21	TK01288			•						
21.5	TK01289			•						
22	TK01290			•						
22.5	TK01291			•						
23	TK01292			•						
23.5	TK01293			•						
24	TK01294			•						
24.5	TK01295			•						
25	TK01296			•						
25.5	TK01297			•						
26	TK01298			•						
26.5	TK01299			•						
27	TK01300			•						
28	TK01301			•						
29	TK01302			•						
30	TK01303			•						
31	TK01304			•						
32	TK01305			•						
33	TK01306			•						
34	TK01307			•						
35	TK01308			•						
36	TK01309			•						
37	TK01310			•						
38	TK01311			•						
39	TK01312			•						
40	TK01313			•						
41	TK01314			•						
42	TK01315			•						
43	TK01316			•						
44	TK01317			•						
45	TK01318			•						
46	TK01319			•						
47	TK01320			•						
48	TK01321			•						
49	TK01322			•						
50	TK01323			•						
51	TK01324			•						
52	TK01325			•						
53	TK01326			•						
54	TK01327			•						
55	TK01328			•						
56	TK01329			•						
57	TK01330			•						
58	TK01331			•						
59	TK01332			•						
60	TK01333			•						
61	TK01334			•						
62	TK01335			•						
63	TK01336			•						
64	TK01337			•						
65	TK01338			•						

JETBROACH One-touch Type 50L(W) for stacked plates			ARA-100A	LO-3550	WOJ-3200	AO-5575A	Pilot Pin
Depth	mm	dia.	PN				
18	TK01068		•	•	•	•	
22	TK00622		•	•	•	•	
24	TK00623		•	•	•	•	
24.5	TK00631		•	•	•	•	
25	TK00624		•	•	•	•	
26	TK00625		•	•	•	•	
26.5	TK00632		•	•	•	•	
28	TK00626		•	•	•	•	
32	TK00627		•	•	•	•	
35	TK00628		•	•	•	•	

JETBROACH One-touch Type			ARA-100A	WA-5000	AO-5575A	Pilot Pin
Depth	mm	dia.	PN			
17.5	TK01350		•	•	•	
18	TK01351		•	•	•	
19	TK01352		•	•	•	
20	TK01353		•	•	•	
21	TK01354		•	•	•	
22	TK01355		•	•	•	
23	TK01356		•	•	•	
24	TK01357		•	•	•	
24.5	TK01358		•	•	•	
25	TK01359		•	•	•	
26	TK01360		•	•	•	
26.5	TK01361		•	•	•	
27	TK01362		•	•	•	
28	TK01363		•	•	•	
29	TK01364		•	•	•	
30	TK01365		•	•	•	
31	TK01366		•	•	•	
32	TK01367		•	•	•	
33	TK01368		•	•	•	
34	TK01369		•	•	•	
35	TK01370		•	•	•	
36	TK01371		•	•	•	
37	TK01372		•	•	•	
38	TK01373		•	•	•	
39	TK01374		•	•	•	
40	TK01375		•	•	•	
41	TK01376		•	•	•	
42	TK01377		•	•	•	
43	TK01378		•	•	•	
44	TK01379		•	•	•	
45	TK01380		•	•	•	
46	TK01381		•	•	•	
47	TK01382		•	•	•	
48	TK01383		•	•	•	
49	TK01384		•	•	•	
50	TK01385		•	•	•	
51	TK01386		•	•	•	
52	TK01387		•	•	•	
53	TK01388		•	•	•	
54	TK01389		•	•	•	
55	TK01390		•	•	•	

JETBROACH Side-lock Type			ARA-100A	Pilot Pin
Depth	mm	dia.	PN	
50	TK01433		•	
51	TK01434		•	
52	TK01435		•	
53	TK01436		•	
54	TK01437		•	
55	TK01438		•	
56	TK01439		•	
57	TK01440		•	
58	TK01441		•	
59	TK01442		•	
60	TK01443		•	
61	TK01444		•	
62	TK01445		•	
63	TK01446		•	
64	TK01447		•	
65	TK01448		•	
66	TK01449		•	
67	TK01450		•	
68	TK01451		•	
69	TK01452		•	
70	TK01453		•	
71	TK01454		•	
72	TK01455		•	
73	TK01456		•	
74	TK01457		•	
75	TK01458		•	
76	TK01459		•	
77	TK01460		•	
78	TK01461		•	
79	TK01462		•	
80	TK01463		•	
81	TK01464		•	
82	TK01465		•	
83	TK01466		•	
84	TK01467		•	
85	TK01468		•	
86	TK01469		•	
87	TK01470		•	
88	TK01471		•	
89	TK01472		•	
90	TK01473		•	
91	TK01474		•	
92	TK01475		•	
93	TK01476		•	
94	TK01477		•	
95	TK01478		•	
96	TK01479		•	
97	TK01480		•	
98	TK01481		•	
99	TK01482		•	
100	TK01483		•	

Pilot Pin		PN : TK01167
06025		
08025		
06050		
08050		
08035		
08075		
12075		

Sales Unit: 1 Piece



BROACH HOLDERS

Industrial cutters for faster and better finished holes

- The Spring-loaded pilot pin picks up the hole location quickly, and ejects the slug automatically at the end of cut
- Available with No. 2 to 4 Morse taper shanks
- Oil Cup Complete Ass'y (PN TB00350) is available as an optional attachment which provides continuous and adjustable cutting oil flow to the cutting area



Specifications		M.T.No.3							M.T.No.4
Morse Taper No.	M.T.No.2	M.T.No.3							M.T.No.4
Model	BHM-02035	BHM-03050							BHM-13075 BHM-14075
PN	TB00390	TB00392							TB00352 TB00354
Cutter	HBO-25L	JBO-35L	HBO-25L	HBO-50L	JBO-35L	JBO-50L	JBO-50L(W)	JBS-75L	
Cutter Diameter	12 - 17 dia.	17.5 - 35 dia.	17.5 - 40 dia.	12 - 17 dia.	17.5 - 52 dia.	12 - 18 dia.	19 - 52 dia.	17.5 - 40 dia.	18 - 35 dia.
Pilot Pin	06025	08025	08035	06025	08025	06050	08050	08035	08050
	Optional	Included	Optional	Included	Optional	Included	Optional	Included	Included

HBO: HI-BROACH One-touch Type

JBO: JETBROACH One-touch Type

JBS: JETBROACH Side-lock Type