




PKA-75

PNAKA-75

Size 	Model Number	Wheel	Bearing	Load Capacity		Tire Width R	Shaft Diameter D	Overall Height H1	Plate Size F1/F2	Mounting Hole Spacing P1/P2	Plate Hole d	Weight (g)	
				(daN)	(kgf)								
75	■ Nylon												
	PKA-75	Nylon		100	102.0	32	10	101	91/68	63/40	9.5	310	
	PBKA-75	Nylon	B/B	120	122.4							370	
	PBDKA-75	Nylon	SUS									370	
	■ Nylon Rim · Rubber Wheel												
	PNKA-75	Rubber	B/B	70	71.4	32	10	101	91/68	63/40	9.5	400	
	PNDKA-75	Rubber	SUS									400	
	PNAKA-75	Rubber										360	
	■ Nylon Rim · Urethane Rubber Wheel												
	PNUKA-75	Urethane	B/B	100	102.0	32	10	101	91/68	63/40	9.5	390	
	PNUDKA-75	Urethane	SUS									390	
	PNUAKA-75	Urethane										340	
	■ Monomer Cast Nylon												
	UWBKA-75	MC Nylon	B/B	150	153.0	24	10	101	91/68	63/40	9.5	410	
	UWBKA-75	MC Nylon	SUS									410	
	UWAKA-75	MC Nylon										370	
	UWBSKA-75	MC Nylon	B/B									390	
	UWBSDKA-75	MC Nylon	SUS									390	
	■ Steel Rim · Rubber Wheel <b>Wheel rim is not stainless steel.</b>												
	SKA-75	Rubber	B/B	80	81.6	32	10	101	91/68	63/40	9.5	420	
	SRKA-75	Red Rubber	B/B	60	61.2							420	
CRKA-75	Heat-resistance	B/B	80	81.6	440								
■ Steel Rim · Urethane Rubber Wheel <b>Wheel rim is not stainless steel.</b>													
SUIKA-75	Urethane	B/B	120	122.4	32	10	101	91/68	63/40	9.5	500		
SUIEKA-75	Anti-Static	B/B									500		

Bearing: No mark -- Spindle sleeve, B/B -- Steel bearing, SUS -- Stainless steel bearing

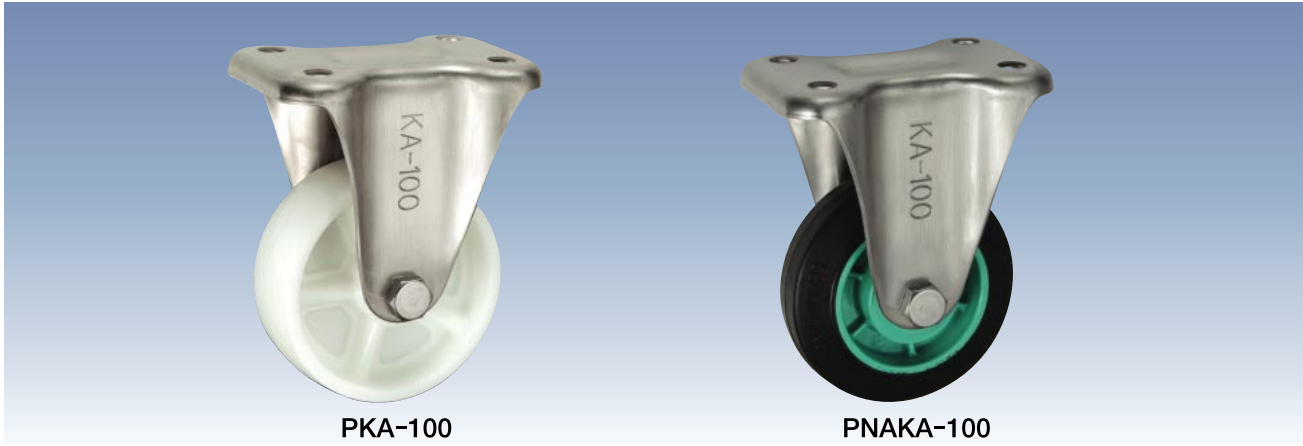
 Build-to-order manufacturing

● The materials of KA Type bracket are all stainless steel (SUS 304 / 18-8 stainless).

# KA Type

Size: 100mm

Stainless Steel Rigid Bracket



PKA-100

PNAKA-100

Unit: mm

Size 	Model Number	Wheel	Bearing	Load Capacity		Tire Width R 	Shaft Diameter D 	Overall Height H1 	Plate Size F1/F2 	Mounting Hole Spacing P1/P2 	Plate Hole d 	Weight (g) 	
				(daN)	(kgf)								
100	■ Nylon												
	PKA-100	Nylon		120	122.4	35	12	144	115/80	80/45	11	580	
	PBKA-100	Nylon	B/B	180	183.6							640	
	PBDKA-100	Nylon	SUS									640	
	■ Nylon Rim·Rubber Wheel												
	PNKA-100	Rubber	B/B	100	102.0	32	12	144	115/80	80/45	11	680	
	PNDKA-100	Rubber	SUS									680	
	PNAKA-100	Rubber										620	
	■ Nylon Rim·Urethane Rubber Wheel												
	PNUKA-100	Urethane	B/B	150	153.0	32	12	144	115/80	80/45	11	660	
	PNUDKA-100	Urethane	SUS									660	
	PNUAKA-100	Urethane										600	
	■ Monomer Cast Nylon												
	UWBKA-100	MC Nylon	B/B	200	204.0	29	12	144	115/80	80/45	11	790	
	UWBDKA-100	MC Nylon	SUS									790	
	UWAKA-100	MC Nylon										740	
	UWBSKA-100	MC Nylon	B/B									740	
	UWBSDKA-100	MC Nylon	SUS									740	
	■ Steel Rim·Rubber Wheel <b>Wheel rim is not stainless steel.</b>												
	SKA-100	Rubber	B/B	130	132.6	35	12	144	115/80	80/45	11	780	
SRKA-100	Red Rubber	B/B	100	102.0	780								
CRKA-100	Heat-resistance	B/B	130	132.6	810								
■ Steel Rim·Urethane Rubber Wheel <b>Wheel rim is not stainless steel.</b>													
SUIKA-100	Urethane	B/B	180	183.6	32	12	144	115/80	80/45	11	850		
SUIEKA-100	Anti-Static	B/B									850		

Bearing: No mark -- Spindle sleeve, B/B -- Steel bearing, SUS -- Stainless steel bearing

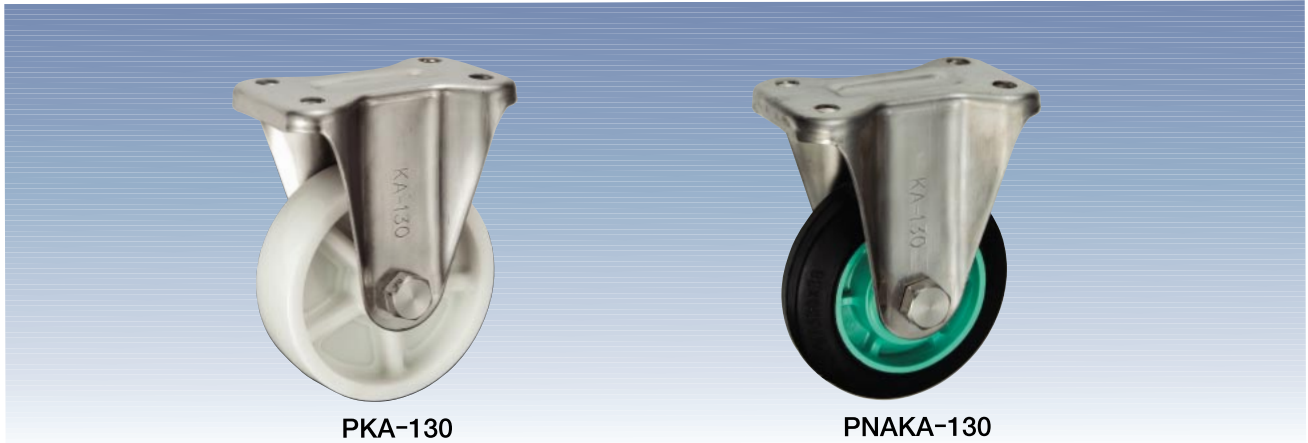
Build-to-order manufacturing

● The materials of KA Type bracket are all stainless steel (SUS 304 / 18-8 stainless).

## KA Type


Size: 130mm

Stainless Steel Rigid Bracket




PKA-130

PNAKA-130

Size 	Model Number	Wheel	Bearing	Load Capacity		Tire Width R	Shaft Diameter D	Overall Height H1	Plate Size F1/F2	Mounting Hole Spacing P1/P2	Plate Hole d	Weight (g)	
				(daN)	(kgf)								
130	■ Nylon												
	PKA-130	Nylon		150	153.0	42	20	177	137/93	100/56	11	1,130	
	PBKA-130	Nylon	B/B	250	255.0							1,330	
	PBDKA-130	Nylon	SUS									1,330	
	■ Nylon Rim · Rubber Wheel												
	PNKA-130	Rubber	B/B	145	147.9	38	20	177	137/93	100/56	11	1,390	
	PNDKA-130	Rubber	SUS									1,390	
	PNAKA-130	Rubber										120	122.4
	■ Nylon Rim · Urethane Rubber Wheel												
	PNUKA-130	Urethane	B/B	200	204.0	35	20	177	137/93	100/56	11	1,330	
	PNUDKA-130	Urethane	SUS									1,330	
	PNUAKA-130	Urethane										120	122.4
	■ Monomer Cast Nylon												
	UWBKA-130	MC Nylon	B/B	300	306.0	36	20	177	137/93	100/56	11	1,610	
	UWBDKA-130	MC Nylon	SUS									1,610	
	UWAKA-130	MC Nylon										1,460	
	UWBSKA-130	MC Nylon	B/B									1,350	
	UWBSDKA-130	MC Nylon	SUS			30	1,350						
	■ Steel Rim · Rubber Wheel <b>Wheel rim is not stainless steel.</b>												
	SKA-130	Rubber	B/B	180	183.6	42	20	177	137/93	100/56	11	1,590	
SRKA-130	Red Rubber	B/B	140	142.8	1,590								
CRKA-130	Heat-resistance	B/B	180	183.6	1,620								
■ Steel Rim · Urethane Rubber Wheel <b>Wheel rim is not stainless steel.</b>													
SUIKA-130	Urethane	B/B	250	255.0	35	20	177	137/93	100/56	11	1,720		
SUIEKA-130	Anti-Static	B/B									1,720		

Unit: mm

Bearing: No mark -- Spindle sleeve, B/B -- Steel bearing, SUS -- Stainless steel bearing

 Build-to-order manufacturing

● The materials of KA Type bracket are all stainless steel (SUS 304 / 18-8 stainless).

# KA Type

Size: 150mm

Stainless Steel Rigid Bracket



PKA-150



PNAKA-150

Stainless Steel Caster Series

Unit: mm

Size 	Model Number	Wheel	Bearing	Load Capacity		Tire Width R 	Shaft Diameter D 	Overall Height H1 	Plate Size F1/F2 	Mounting Hole Spacing P1/P2 	Plate Hole d 	Weight (g) 	
				(daN)	(kgf)								
150	■ Nylon												
	PKA-150	Nylon		180	183.6	45	20	198	137/93	100/56	11	1,370	
	PBKA-150	Nylon	B/B	300	306.0							1,610	
	PBDKA-150	Nylon	SUS									1,610	
	■ Nylon Rim · Rubber Wheel												
	PNKA-150	Rubber	B/B	175	178.5	38	20	198	137/93	100/56	11	1,630	
	PNDKA-150	Rubber	SUS									1,630	
	PNAKA-150	Rubber										140	142.8
	■ Nylon Rim · Urethane Rubber Wheel												
	PNUKA-150	Urethane	B/B	250	255.0	38	20	198	137/93	100/56	11	1,590	
	PNUDKA-150	Urethane	SUS									1,590	
	PNUAKA-150	Urethane										150	153.0
	■ Monomer Cast Nylon												
	UWBKA-150	MC Nylon	B/B	350	357.0	40	20	198	137/93	100/56	11	2,050	
	UWBDKA-150	MC Nylon	SUS									2,050	
	UWAKA-150	MC Nylon										1,900	
	UWBSKA-150	MC Nylon	B/B			30						1,650	
	UWBSDKA-150	MC Nylon	SUS									1,650	
	■ Steel Rim · Rubber Wheel <b>Wheel rim is not stainless steel.</b>												
	SKA-150	Rubber	B/B	200	204.0	45	20	198	137/93	100/56	11	1,920	
SRKA-150	Red Rubber	B/B	160	163.2	1,920								
CRKA-150	Heat-resistance	B/B	200	204.0	1,960								
■ Steel Rim · Urethane Rubber Wheel <b>Wheel rim is not stainless steel.</b>													
SUIKA-150	Urethane	B/B	300	306.0	38	20	198	137/93	100/56	11	2,110		
SUIEKA-150	Anti-Static	B/B									2,110		

Bearing: No mark -- Spindle sleeve, B/B -- Steel bearing, SUS -- Stainless steel bearing

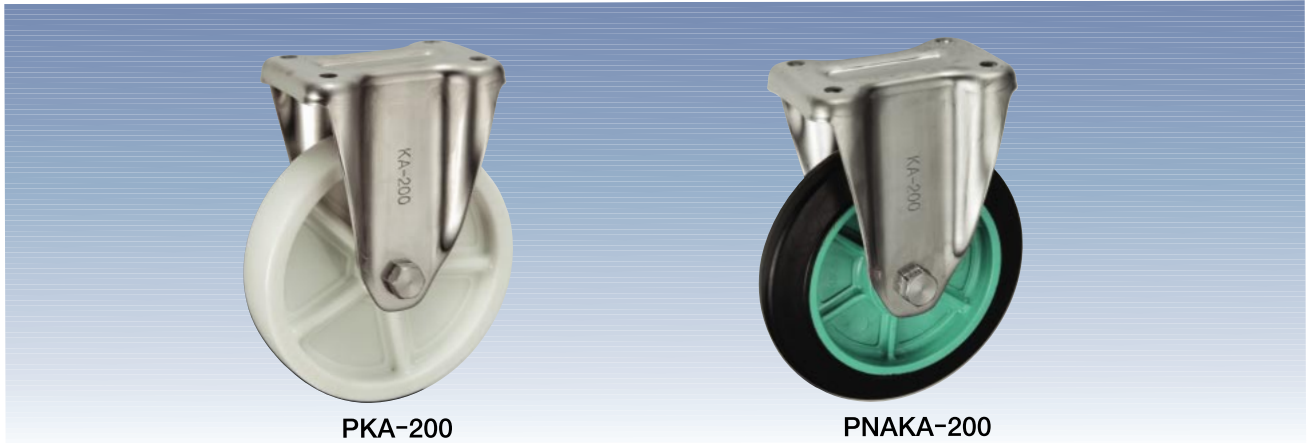
Build-to-order manufacturing

● The materials of KA Type bracket are all stainless steel (SUS 304 / 18-8 stainless).

## KA Type


Size: 200mm

Stainless Steel Rigid Bracket




PKA-200

PNAKA-200

Size 	Model Number	Wheel	Bearing	Load Capacity		Tire Width R	Shaft Diameter D	Overall Height H1	Plate Size F1/F2	Mounting Hole Spacing P1/P2	Plate Hole d	Weight (g)	
				(daN)	(kgf)								
200	■ Nylon												
	PKA-200	Nylon		250	255.0	45	20	250	151/102	112/63	11	2,310	
	PBKA-200	Nylon	B/B	400	408.0							2,520	
	PBDKA-200	Nylon	SUS									2,520	
	■ Nylon Rim · Rubber Wheel												
	PNKA-200	Rubber	B/B	220	224.4	42	20	250	151/102	112/63	11	2,590	
	PNDKA-200	Rubber	SUS									2,590	
	PNAKA-200	Rubber										160	163.2
	■ Nylon Rim · Urethane Rubber Wheel												
	PNUKA-200	Urethane	B/B	350	357.0	42	20	250	151/102	112/63	11	2,460	
	PNUDKA-200	Urethane	SUS									2,460	
	PNUAKA-200	Urethane										250	255.0
	■ Monomer Cast Nylon												
	UWBKA-200	MC Nylon	B/B	500	510.0	42	20	250	151/102	112/63	11	3,470	
	UWBKA-200	MC Nylon	SUS									3,470	
	UWAKA-200	MC Nylon										3,320	
	UWBSKA-200	MC Nylon	B/B									2,930	
	UWBSDKA-200	MC Nylon	SUS			34	2,930						
	■ Steel Rim · Rubber Wheel <b>Wheel rim is not stainless steel.</b>												
	SKA-200	Rubber	B/B	250	255.0	45	20	250	151/102	112/63	11	3,240	
SRKA-200	Red Rubber	B/B	200	204.0	3,240								
SHKA-200	High-Rebound	B/B	250	255.0	3,240								
CRKA-200	Heat-resistance	B/B			3,320								
■ Steel Rim · Urethane Rubber Wheel <b>Wheel rim is not stainless steel.</b>													
SUIKA-200	Urethane	B/B	400	408.0	42	20	250	151/102	112/63	11	3,410		
SUIEKA-200	Anti-Static	B/B									3,410		

Unit: mm

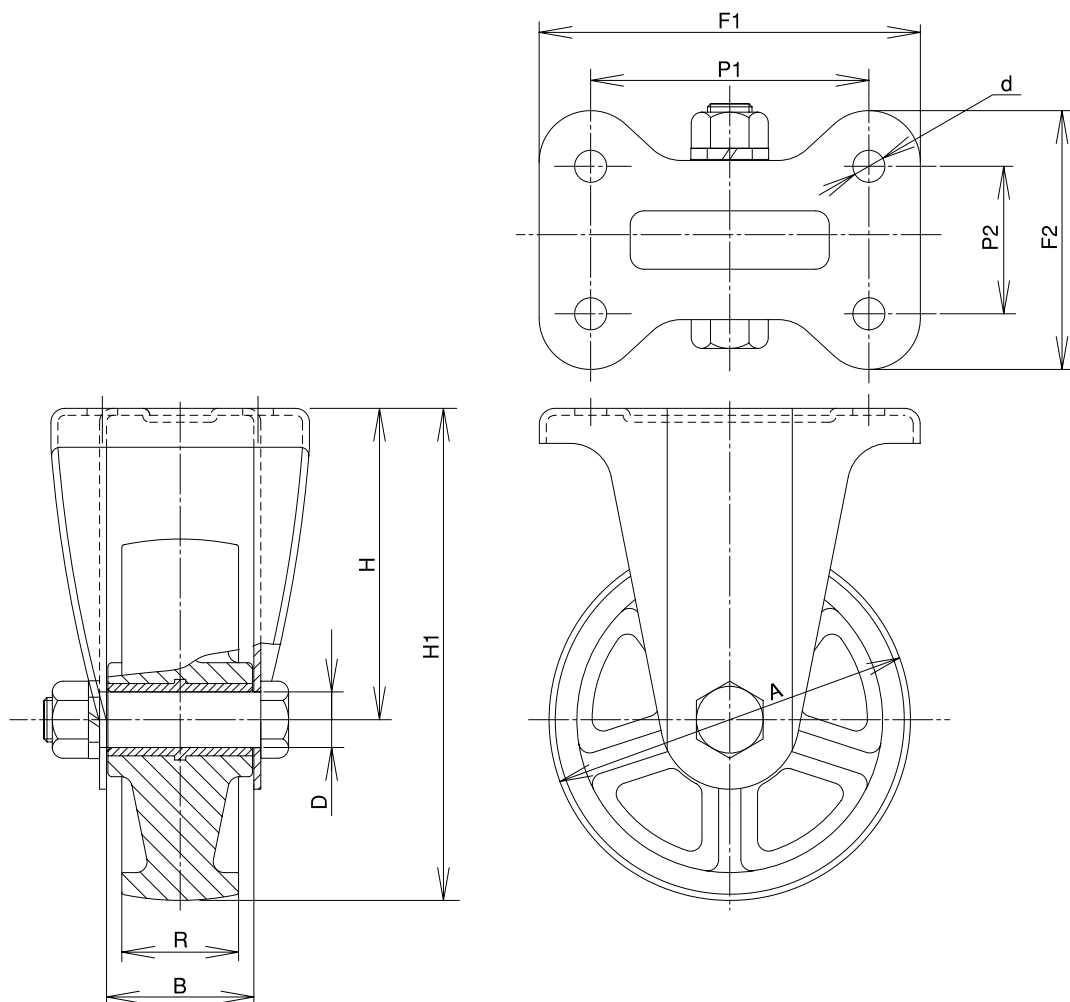
Bearing: No mark -- Spindle sleeve, B/B -- Steel bearing, SUS -- Stainless steel bearing

 Build-to-order manufacturing

● The materials of KA Type bracket are all stainless steel (SUS 304 / 18-8 stainless).

# KA Type

Stainless Steel Rigid Bracket



Stainless Steel Caster Series

## 【Bracket Dimensions】

Unit: mm

Size 	Load Capacity 		Bracket Height H 	Bracket Width B 	Weight (g) 
	(daN)	(kgf)			
75	150	153.0	63	40	220
100	200	204.0	94	43	420
130	300	306.0	112	53	810
150	350	357.0	123	56	960
200	500	510.0	150	56	1,570

\* The shaft set is included in the bracket.

## Notice

The materials of KA Type bracket are all stainless steel, but the following wheels are not stainless steel. In addition, stainless steel bearings cannot be set.

Please be careful when selecting a caster.

Steel Rim • Rubber Wheel (S, SR, SH, CR Type)

Steel Rim • Urethane Wheel (SUI, SUIE Type)