




Size 	Model Number	Wheel	Bearing	Load Capacity		Tire Width R	Shaft Diameter D	Overall Height H1	Plate Size F1/F2	Mounting Hole Spacing P1/P2	Plate Hole d	Weight (g)	
				(daN)	(kgf)								
75	■ Steel Rim · Rubber Wheel												
	SK-75	Rubber	B/B	80	81.6	32	10	101	91/68	63/40	9.5	430	
	SRK-75	Red Rubber	B/B	60	61.2							430	
	CRK-75	Heat-resistance	B/B	80	81.6							450	
	■ Steel Rim · Urethane Rubber Wheel												
	SUIK-75	Urethane	B/B	120	122.4	32	10	101	91/68	63/40	9.5	510	
	SUIEK-75	Anti-Static	B/B									510	
	■ Nylon Rim · Rubber Wheel												
	PNK-75	Rubber	B/B	70	71.4	32	10	101	91/68	63/40	9.5	410	
	PNDK-75	Rubber	SUS									410	
	PNAK-75	Rubber										370	
	■ Nylon Rim · Urethane Rubber Wheel												
	PNUK-75	Urethane	B/B	100	102.0	32	10	101	91/68	63/40	9.5	400	
	PNUDK-75	Urethane	SUS									400	
	PNUAK-75	Urethane		70	71.4							350	
	■ Nylon												
	PK-75	Nylon		100	102.0	32	10	101	91/68	63/40	9.5	320	
	PBK-75	Nylon	B/B	120	122.4							380	
	PBDK-75	Nylon	SUS									380	
	■ Monomer Cast Nylon												
	UWBK-75	MC Nylon	B/B	120	122.4	24	10	101	91/68	63/40	9.5	420	
UWBDK-75	MC Nylon	SUS	420										
UWAK-75	MC Nylon		380										
UWBSK-75	MC Nylon	B/B	400										
UWBSDK-75	MC Nylon	SUS	400										

Bearing: No mark -- Spindle sleeve, B/B -- Steel bearing, SUS -- Stainless steel bearing

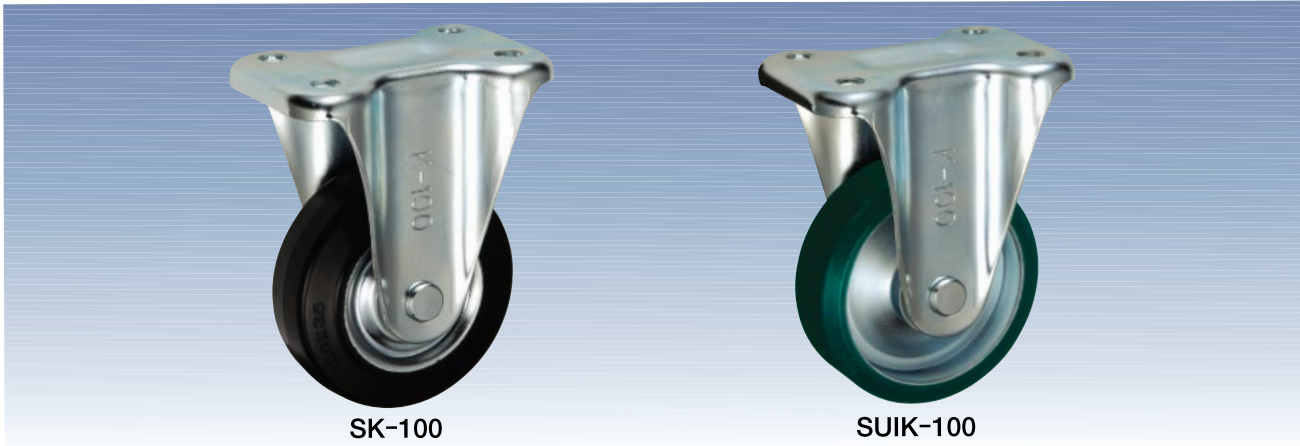
 Build-to-order manufacturing

K Type

Size: 100mm

Medium Weight Rigid Bracket

Medium Weight Caster Series



SK-100

SUIK-100

Unit: mm

Size 	Model Number	Wheel	Bearing	Load Capacity		Tire Width R 	Shaft Diameter D 	Overall Height H1 	Plate Size F1/F2 	Mounting Hole Spacing P1/P2 	Plate Hole d 	Weight (g)
				(daN)	(kgf)							
100	■ Steel Rim · Rubber Wheel											
	SK-100	Rubber	B/B	130	132.6	35	12	144	115/80	80/45	11	800
	SRK-100	Red Rubber	B/B	100	102.0							800
	CRK-100	Heat-resistance	B/B	130	132.6							830
	■ Steel Rim · Urethane Rubber Wheel											
	SUIK-100	Urethane	B/B	180	183.6	32	12	144	115/80	80/45	11	870
	SUIEK-100	Anti-Static	B/B									870
	■ Nylon Rim · Rubber Wheel											
	PNK-100	Rubber	B/B	100	102.0	32	12	144	115/80	80/45	11	700
	PNDK-100	Rubber	SUS									700
	PNAK-100	Rubber										640
	■ Nylon Rim · Urethane Rubber Wheel											
	PNUK-100	Urethane	B/B	150	153.0	32	12	144	115/80	80/45	11	680
	PNUDK-100	Urethane	SUS									680
	PNUAK-100	Urethane		100	102.0							620
	■ Nylon											
	PK-100	Nylon		120	122.4	35	12	144	115/80	80/45	11	600
	PBK-100	Nylon	B/B	180	183.6							660
	PBDK-100	Nylon	SUS									660
	■ Monomer Cast Nylon											
UWBK-100	MC Nylon	B/B	180	183.6	29	12	144	115/80	80/45	11	810	
UWBDK-100	MC Nylon	SUS									810	
UWAK-100	MC Nylon				30						760	
UWBSK-100	MC Nylon	B/B									760	
UWBSDK-100	MC Nylon	SUS									760	

Bearing: No mark -- Spindle sleeve, B/B -- Steel bearing, SUS -- Stainless steel bearing

Build-to-order manufacturing

Medium Weight Caster Series

K Type


Size: 130mm

Medium Weight Rigid Bracket



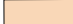
SK-130

SUIK-130

Size 	Model Number	Wheel	Bearing	Load Capacity		Tire Width R	Shaft Diameter D	Overall Height H1	Plate Size F1/F2	Mounting Hole Spacing P1/P2 (P2')	Plate Hole d	Weight (g)	
				(daN)	(kgf)								
130	■ Steel Rim · Rubber Wheel												
	SK-130	Rubber	B/B	180	183.6	42	20	177	137/93	※100/56 (50)	11	1,580	
	SRK-130	Red Rubber	B/B	140	142.8							1,580	
	CRK-130	Heat-resistance	B/B	180	183.6							1,610	
	■ Steel Rim · Urethane Rubber Wheel												
	SUIK-130	Urethane	B/B	250	255.0	35	20	177	137/93	※100/56 (50)	11	1,710	
	SUIEK-130	Anti-Static	B/B									1,710	
	■ Nylon Rim · Rubber Wheel												
	PNK-130	Rubber	B/B	145	147.9	38	20	177	137/93	※100/56 (50)	11	1,380	
	PNDK-130	Rubber	SUS									1,380	
	PNAK-130	Rubber										120	122.4
	■ Nylon Rim · Urethane Rubber Wheel												
	PNUK-130	Urethane	B/B	200	204.0	35	20	177	137/93	※100/56 (50)	11	1,320	
	PNUDK-130	Urethane	SUS									1,320	
	PNUAK-130	Urethane										120	122.4
	■ Nylon												
	PK-130	Nylon		250	255.0	42	20	177	137/93	※100/56 (50)	11	1,120	
	PBK-130	Nylon	B/B									1,320	
	PBDK-130	Nylon	SUS									1,320	
	■ Monomer Cast Nylon												
UWBK-130	MC Nylon	B/B	250	255.0	36	20	177	137/93	※100/56 (50)	11	1,600		
UWBDK-130	MC Nylon	SUS									1,600		
UWAK-130	MC Nylon										1,450		
UWBSK-130	MC Nylon	B/B			30						1,340		
UWBSDK-130	MC Nylon	SUS									1,340		

Unit: mm

Bearing: No mark -- Spindle sleeve, B/B -- Steel bearing, SUS -- Stainless steel bearing

 Build-to-order manufacturing

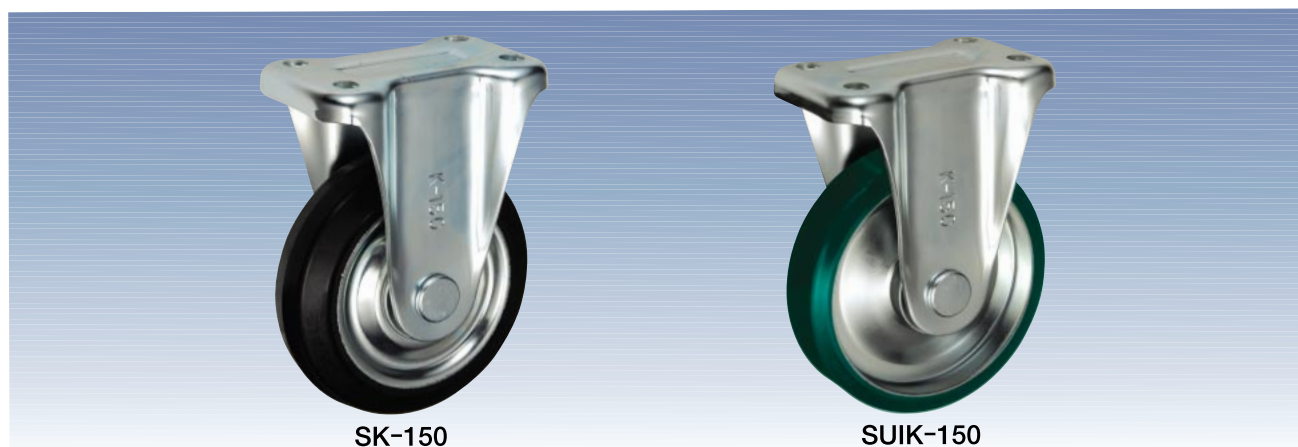
※Oval-shaped screw holes

K Type

Size: 150mm

Medium Weight Rigid Bracket

Medium Weight Caster Series



SK-150

SUIK-150

Unit: mm

Size 	Model Number	Wheel	Bearing	Load Capacity		Tire Width R 	Shaft Diameter D 	Overall Height H1 	Plate Size F1/F2 	Mounting Hole Spacing P1/P2 (P2')	Plate Hole d 	Weight (g)
				(daN)	(kgf)							
150	■ Steel Rim · Rubber Wheel											
	SK-150	Rubber	B/B	200	204.0	45	20	198	137/93	※100/56 (50)	11	1,960
	SRK-150	Red Rubber	B/B	160	163.2							1,960
	CRK-150	Heat-resistance	B/B	200	204.0							2,000
	■ Steel Rim · Urethane Rubber Wheel											
	SUIK-150	Urethane	B/B	300	306.0	38	20	198	137/93	※100/56 (50)	11	2,150
	SUIEK-150	Anti-Static	B/B									2,150
	■ Nylon Rim · Rubber Wheel											
	PNK-150	Rubber	B/B	175	178.5	38	20	198	137/93	※100/56 (50)	11	1,670
	PNDK-150	Rubber	SUS									1,670
	PNAK-150	Rubber										140
	■ Nylon Rim · Urethane Rubber Wheel											
	PNUK-150	Urethane	B/B	250	255.0	38	20	198	137/93	※100/56 (50)	11	1,630
	PNUDK-150	Urethane	SUS									1,630
	PNUAK-150	Urethane										150
	■ Nylon											
	PK-150	Nylon		180	183.6	45	20	198	137/93	※100/56 (50)	11	1,410
	PBK-150	Nylon	B/B	300	306.0							1,650
	PBDK-150	Nylon	SUS									1,650
	■ Monomer Cast Nylon											
UWBK-150	MC Nylon	B/B	300	306.0	40	20	198	137/93	※100/56 (50)	11	2,090	
UWBDK-150	MC Nylon	SUS									2,090	
UWAK-150	MC Nylon										1,940	
UWBSK-150	MC Nylon	B/B			30						1,690	
UWBSDK-150	MC Nylon	SUS									1,690	

※Oval-shaped screw holes

Bearing: No mark -- Spindle sleeve, B/B -- Steel bearing, SUS -- Stainless steel bearing

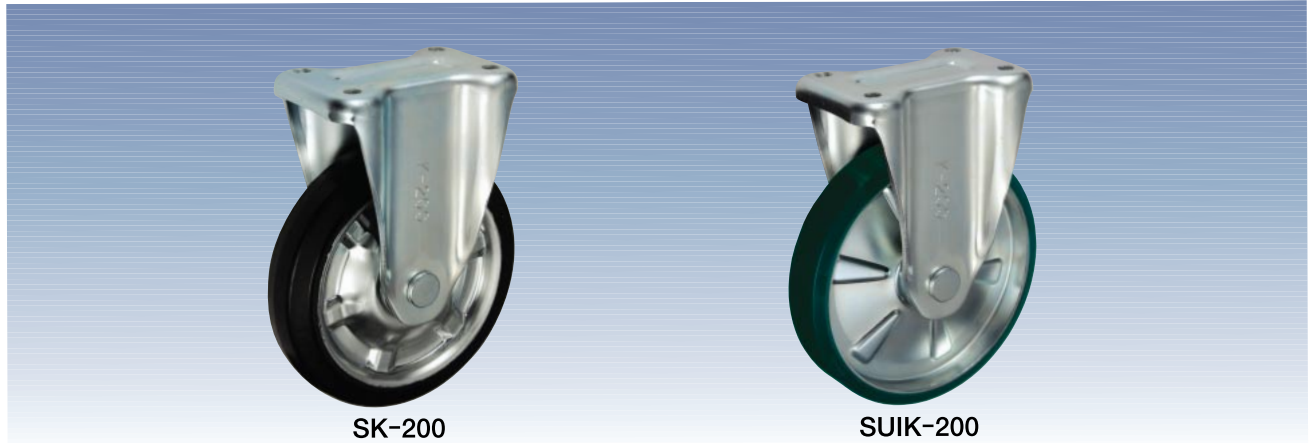
Build-to-order manufacturing

Medium Weight Caster Series

K Type


Size: 200mm

Medium Weight Rigid Bracket




SK-200

SUIK-200

Size 	Model Number	Wheel	Bearing	Load Capacity		Tire Width R	Shaft Diameter D	Overall Height H1	Plate Size F1/F2	Mounting Hole Spacing P1/P2	Plate Hole d	Weight (g)
				(daN)	(kgf)							
200	■ Steel Rim · Rubber Wheel											
	SK-200	Rubber	B/B	250	255.0	45	20	250	151/102	112/63	11	3,400
	SRK-200	Red Rubber	B/B	200	204.0							3,400
	SHK-200	High-Rebound	B/B	250	255.0							3,400
	CRK-200	Heat-resistance	B/B									3,480
	■ Steel Rim · Urethane Rubber Wheel											
	SUIK-200	Urethane	B/B	400	408.0	42	20	250	151/102	112/63	11	3,570
	SUIEK-200	Anti-Static	B/B									3,570
	■ Nylon Rim · Rubber Wheel											
	PNK-200	Rubber	B/B	220	224.4	42	20	250	151/102	112/63	11	2,750
	PNDK-200	Rubber	SUS									2,750
	PNAK-200	Rubber										160
	■ Nylon Rim · Urethane Rubber Wheel											
	PNUK-200	Urethane	B/B	350	357.0	42	20	250	151/102	112/63	11	2,620
	PNUDK-200	Urethane	SUS									2,620
	PNUAK-200	Urethane		250	255.0							2,450
	■ Nylon											
	PK-200	Nylon		250	255.0	45	20	250	151/102	112/63	11	2,470
	PBK-200	Nylon	B/B	400	408.0							2,680
	PBDK-200	Nylon	SUS									2,680
	■ Monomer Cast Nylon											
	UWBK-200	MC Nylon	B/B	420	428.4	42	20	250	151/102	112/63	11	3,630
UWBDK-200	MC Nylon	SUS	3,630									
UWAK-200	MC Nylon		3,480									
UWBSK-200	MC Nylon	B/B	3,090									
UWBSDK-200	MC Nylon	SUS	34			3,090						

Unit: mm

Bearing: No mark -- Spindle sleeve, B/B -- Steel bearing, SUS -- Stainless steel bearing

 Build-to-order manufacturing

K Type

Size: 250mm~300mm

Medium Weight Rigid Bracket

Medium Weight Caster Series



SK-250

SUIK-250

Unit: mm

Size 	Model Number	Wheel	Bearing	Load Capacity		Tire Width R	Shaft Diameter D	Overall Height H1	Plate Size F1/F2	Mounting Hole Spacing P1/P2	Plate Hole d	Weight (g)	
				(daN)	(kgf)								
250	■ Steel Rim - Rubber Wheel												
	SK-250	Rubber	B/B	330	336.6	50	25	305	200/140	140/80	14	5,510	
	SRK-250	Red Rubber	B/B	260	265.2							5,510	
	CRK-250	Heat-resistance	B/B	330	336.6							5,730	
	■ Steel Rim - Urethane Rubber Wheel												
SUIK-250	Urethane	B/B	500	510.0	45	25	305	200/140	140/80	14	6,070		
300	■ Monomer Cast Nylon												
	UWBSK-250	MC Nylon	B/B	550	561.0	36	25	305	200/140	140/80	14	5,230	
	■ Steel Rim - Rubber Wheel												
300	SK-300	Rubber	B/B	350	357.0	50	25	374	220/150	160/90	14	8,830	
	■ Steel Rim - Urethane Rubber Wheel												
	SUIK-300	Urethane	B/B	600	612.0	50	25	374	220/150	160/90	14	8,500	

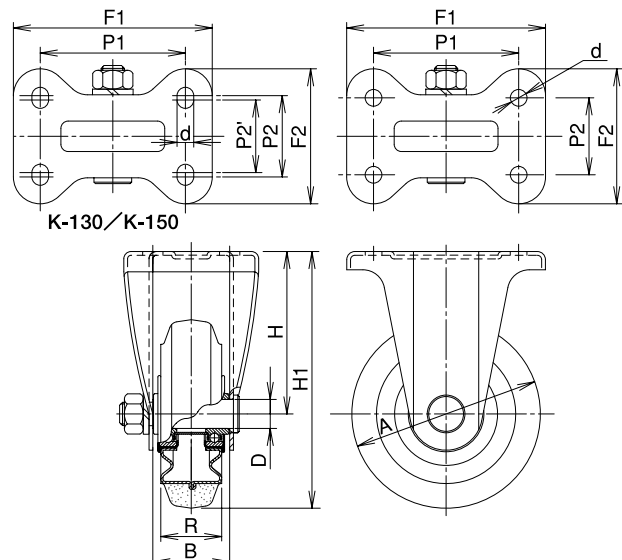
Bearing: B/B -- Steel bearing

Build-to-order manufacturing

[Bracket Dimensions]

Unit: mm

Size 	Load Capacity		Bracket Height H	Bracket Width B	Weight (g)
	(daN)	(kgf)			
75	120	122.4	63	40	230
100	180	183.6	94	43	440
130	250	255.0	112	53	800
150	300	306.0	123	56	1,000
200	420	428.4	150	56	1,730
250	550	561.0	180	90	2,990
300	600	612.0	224	110	4,060



* The shaft set is included in the bracket.